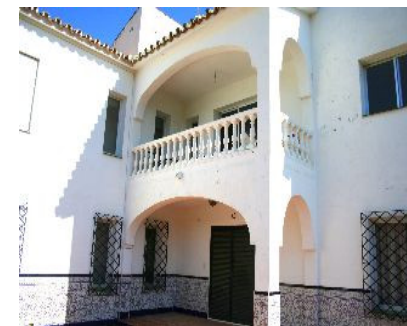
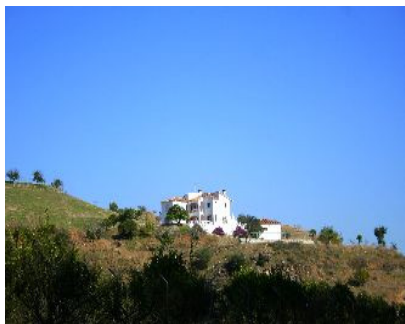


Sales - Commercial - Coín
1.900.000€



Ref.-ID: MIBGR2322323

Coín

Commercial



6



2



893 m2



75000 m2

EQUESTRIAN Centre . Loads of POTENTIAL . Excellent communication links . Close to the popular town of Coín . Close to many TAPAS Bars . Walking distance to local bar-restaurant . EXPERIENCE THE CULTURE AND LIFESTYLE of the Guadalhorce Valley Exclusive equestrian property with excellent communication links. Located only a few minutes from the centre of Coín and 30 minutes from Malaga and Marbella. The plot of 70,000m² is fully fenced, the house has its own well and water deposit. Picadero 600m² warehouse Large house of 300m² Workshop 300m² Stabling for 10 horses The house does require renovating but it would make a perfect equestrian centre or rural hotel. 30 minutes drive to Marbella 35 minutes to Malaga Airport

Setting
✓ Country

Condition
✓ Fair

Views
✓ Mountain
✓ Country

Features
✓ Covered Terrace
✓ Fitted Wardrobes
✓ Guest Apartment
✓ Access for people with reduced
mobility
✓ Barbeque

Furniture
✓ Not Furnished

Kitchen
✓ Partially Fitted

Garden
✓ Private

Parking
✓ Private

Category
✓ Resale