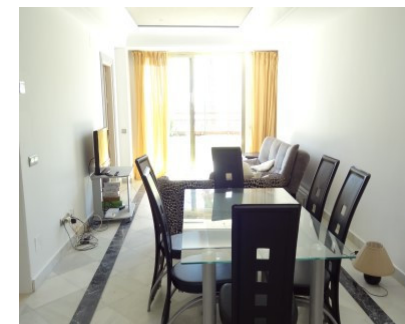


Sales - Apartment - Puerto Banús

4.200.000€



Ref.-ID: MIBGR2768600

Puerto Banús

Apartment

Community: 15,600 EUR / year

Rubbish: 348 EUR / year



6



6



663 m2

This unique large beachfront garden duplex occupies the front line to the beach only steps away from a private gate onto the promenade in Puerto Banus. The unique property has been sub-divided into 4 separate apartments sharing a common private entry foyer to ideally suit a large extended family or group of friends buying together, or as a rental investment. Each of the apartments has its own title deed, allowing a buyer re-sell any of the properties. Options exist to re-combine the upper or lower 2 apartments, or the entire duplex. Located right on the beachfront in central Puerto Banus, there are two apartments on the ground floor with direct garden access, and two on the first floor with private terraces. All four apartments offer wonderful sea views right on the beachfront, and have their own small kitchens and lounges. There are 2 x 2 bed apartments (145m2 each) + 2 x 1 bed apartments (130 m2 each) each with their own entrances. 3 underground parking spaces included. The complex also offers a large communal swimming pool and direct beach access. A unique set-up right on the beachfront in Puerto Banus.

Setting

- ✓ Beachfront
- ✓ Town
- ✓ Commercial Area
- ✓ Beachside
- ✓ Port
- ✓ Close To Port
- ✓ Close To Shops
- ✓ Close To Sea
- ✓ Close To Town
- ✓ Close To Schools
- ✓ Marina
- ✓ Close To Marina
- ✓ Front Line Beach Complex

Features

- ✓ Lift
- ✓ Fitted Wardrobes
- ✓ Near Transport
- ✓ Private Terrace
- ✓ Satellite TV
- ✓ WiFi
- ✓ Guest Apartment
- ✓ Storage Room
- ✓ Utility Room
- ✓ Ensuite Bathroom
- ✓ Marble Flooring
- ✓ Jacuzzi
- ✓ Barbeque
- ✓ Double Glazing
- ✓ Near Mosque
- ✓ Near Church

Orientation

- ✓ South

Kitchen

- ✓ Fully Fitted

Condition

- ✓ Excellent

Garden

- ✓ Communal

Pool

- ✓ Communal

Security

- ✓ Gated Complex
- ✓ Electric Blinds
- ✓ Entry Phone
- ✓ Alarm System

Climate Control

- ✓ Air Conditioning

Parking

- ✓ Underground
- ✓ More Than One

Views

- ✓ Sea
- ✓ Beach
- ✓ Panoramic

Category

- ✓ Beachfront
- ✓ Holiday Homes
- ✓ Investment
- ✓ Luxury
- ✓ Reduced
- ✓ Resale