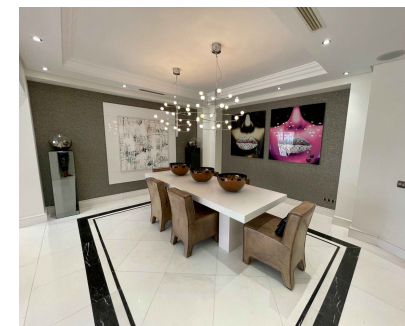
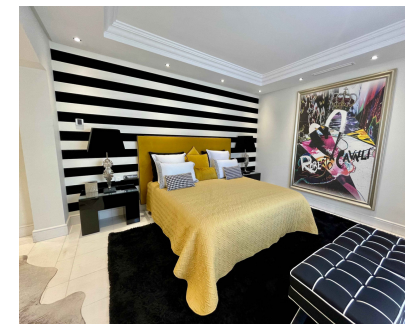
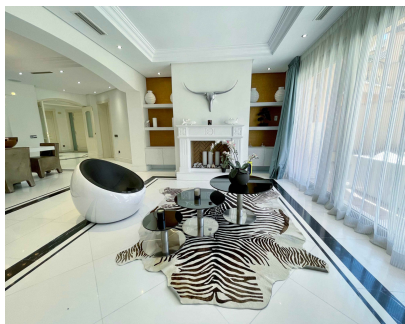


Sales - Apartment - Puerto Banús  
2.700.000€



Ref.-ID: MIBGR3319696

Puerto Banús

Apartment

Community: 14,280 EUR / year

IBI: 4,115 EUR / year

Rubbish: 185 EUR / year



3



4



274 m2

Casanova is the most elegant and distinguished luxury urbanization of the Costa del Sol. Located just opposite the prestigious Hotel 5 \* Guadalpin Banús, a few steps from the famous Ocean Club and a few meters from the exclusive Puerto Banus, Casa - Nova was designed to meet the most demanding demand in search of the best performance without giving up the best location. Located at the foot of the sea and with direct access to the beach, Casa - Nova offers beautiful gardens of exquisite Italian design maintained 365 days a year, private spa area and has the highest security measures guaranteeing the total tranquility of your Just 9 owners during the 24 hours a day. Distributed in only 2 blocks, Casa - Nova offers exclusive and modern properties of majestic dimensions with privileged views of the Mediterranean.

- |  |   |  |   |  |   |
|--|---|--|---|--|---|
| <b>Setting</b> <ul style="list-style-type: none"><li>✓ Beachfront</li><li>✓ Beachside</li><li>✓ Close To Port</li><li>✓ Close To Town</li><li>✓ Close To Schools</li></ul> | <b>Orientation</b> <ul style="list-style-type: none"><li>✓ South East</li></ul> | <b>Condition</b> <ul style="list-style-type: none"><li>✓ Excellent</li></ul> | <b>Pool</b> <ul style="list-style-type: none"><li>✓ Communal</li></ul>                                    | <b>Views</b> <ul style="list-style-type: none"><li>✓ Sea</li></ul>       | <b>Features</b> <ul style="list-style-type: none"><li>✓ Covered Terrace</li><li>✓ Near Transport</li><li>✓ Private Terrace</li><li>✓ Solarium</li><li>✓ Gym</li><li>✓ Tennis Court</li><li>✓ Storage Room</li><li>✓ Marble Flooring</li><li>✓ Barbeque</li><li>✓ Double Glazing</li></ul> |
| <b>Furniture</b> <ul style="list-style-type: none"><li>✓ Fully Furnished</li></ul>   | <b>Kitchen</b> <ul style="list-style-type: none"><li>✓ Fully Fitted</li></ul>   | <b>Garden</b> <ul style="list-style-type: none"><li>✓ Communal</li></ul>     | <b>Security</b> <ul style="list-style-type: none"><li>✓ Alarm System</li><li>✓ 24 Hour Security</li></ul> | <b>Parking</b> <ul style="list-style-type: none"><li>✓ Private</li></ul> | <b>Category</b> <ul style="list-style-type: none"><li>✓ Beachfront</li><li>✓ Luxury</li></ul>   |