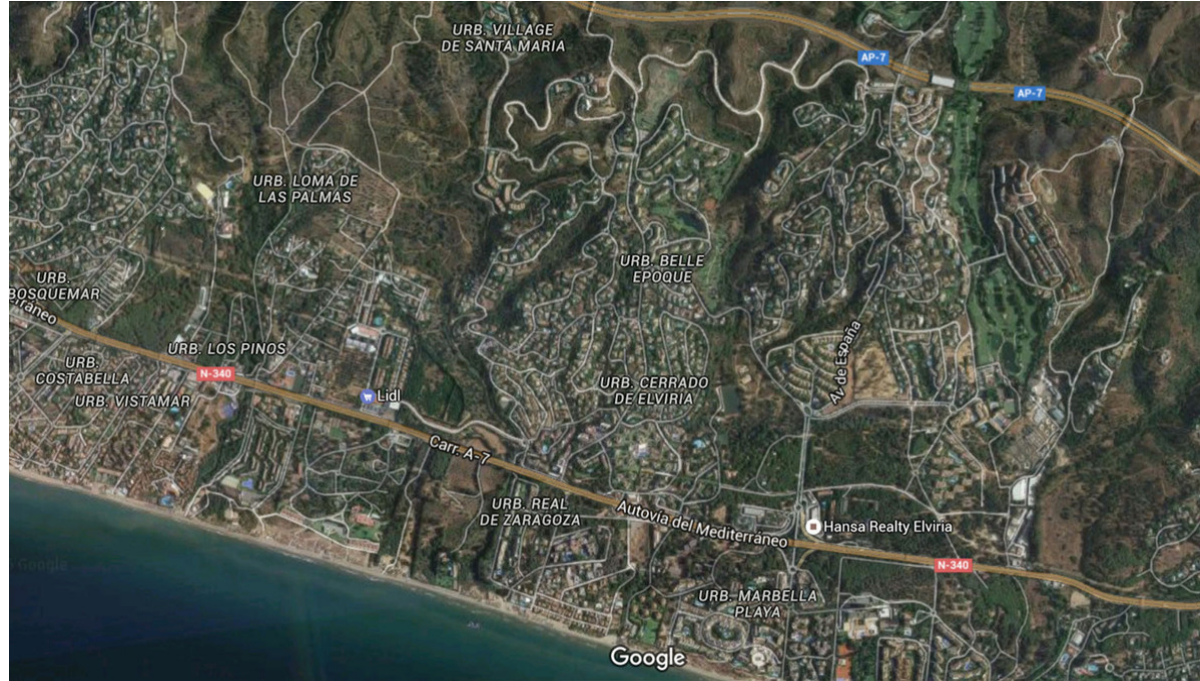


## Sales - Plot - Elviria

# 6.690.000€



Ref.-ID: MIBGR3412162

Elviria

Plot



28123 m2

19 PLOTS - ELVIRIA - EAST MARBELLA FLEXIBLE PLAN: The company who own the land have a plan to purchase 5 plots, then option for another 5 plots and so on. This is a residential area of luxury villas, located in the heart of the Costa del Sol, 9 Km from the centre of Marbella and 35 minutes from the International Airport from Malaga. In total there are 19 plots available which correspond to the numbers 99-100-101-102-103-104-105-106-107-108-109-110-111-112-115-116-117-118-119, surrounded by a large number of native trees with magnificent views of the sea from the plots. SSE orientation. By car: 2 mins to Amenities - 35 mins to Malaga airport - 10 mins to Marbella town centre - 15 mins to Puerto Banus - 5 mins to Beach

### Setting

- ✓ Close To Golf
- ✓ Close To Sea
- ✓ Urbanisation

### Orientation

- ✓ South East
- ✓ South
- ✓ South West

### Views

- ✓ Sea
- ✓ Panoramic

### Category

- ✓ Off Plan
- ✓ Contemporary