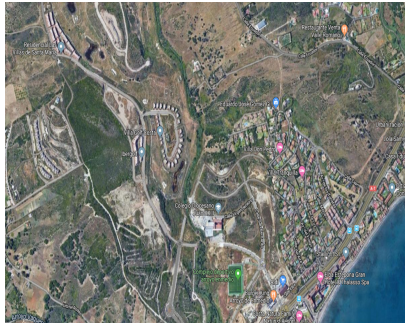
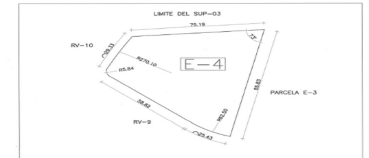


# Sales - Plot - Estepona

## 2.576.888€



USO: RESIDENCIAL FAMILIAR  
TIPOLOGIA: PUEBLO MEDITERRANEO 2  
OCUPACION: 50%  
ALTURA: 5,20 M.  
SEPARACION A LINDEROS: 3 M.



Ref.-ID: MIBGR3575434

Estepona

Plot



4685 m2

Residential plot on the outskirts of Estepona, near the Diocesan Juan XXIII private school, supermarkets, shops, restaurant and 4 minutes from the beach. It has an area of 4,685.25 m2 of which 2,864.09 m2 of buildable roof with a typology of 24 homes.

### Setting

- ✓ Close To Port
- ✓ Close To Shops
- ✓ Close To Sea
- ✓ Close To Town
- ✓ Close To Schools

### Orientation

- ✓ North
- ✓ East
- ✓ South East
- ✓ South
- ✓ South West
- ✓ West