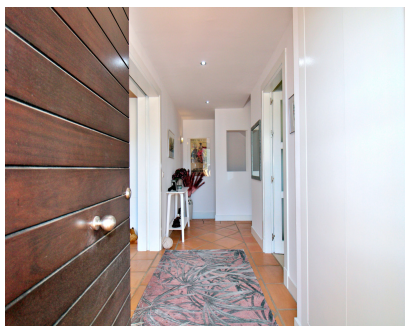
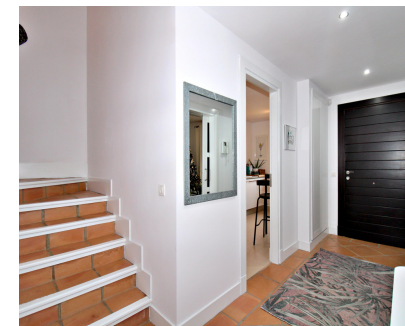


Sales - House - Benahavís  
449.000€



Ref.-ID: MIBGR3983263

Benahavís

House

Community: 2,208 EUR / year

IBI: 537 EUR / year



3



3



225 m2

Discover the allure of residing in one of Spain's iconic White Villages with this captivating townhouse nestled in the charming enclave of Benahavís. Boasting contemporary elegance, panoramic vistas, and convenient proximity to the acclaimed dining spots of this historic village, this property presents an unparalleled opportunity to immerse yourself in Andalusian allure. Step into a world of modern refinement as you enter the expansive main level, featuring a welcoming entrance, well-appointed kitchen, inviting living area, and elegant dining space. Ascend to the first floor where two generously sized ensuite bedrooms offer sweeping mountain panoramas, with one currently serving as a versatile office and guest retreat. Descend to the lower level, where a third bedroom, presently configured as a fitness haven, awaits alongside a sleek new bathroom, laundry facilities, and a garage catering to one vehicle with ample storage capacity. Meticulously upgraded by its current owners, this residence exudes contemporary sophistication and is meticulously maintained to perfection. Outside, revel in the meticulously landscaped grounds of the residential complex, boasting three enchanting pool areas and a clubhouse replete with an indoor heated pool, gym facilities, changing rooms, and a cozy cafeteria. Embrace a lifestyle of leisure and luxury amidst this idyllic Mediterranean setting, where every day is a testament to the art of refined living. Key Features: Modern townhouse in the renowned village of Benahavís Stunning mountain views from two ensuite bedrooms Versatile third bedroom ideal for a gym or guest accommodation Stylishly upgraded interiors with a new bathroom and contemporary finishes Secure garage with storage space Impeccably maintained residential complex with manicured gardens and multiple pool areas Clubhouse amenities include an indoor heated pool, gym, and cafeteria Elevate your lifestyle amidst the timeless charm of Benahavís, where modern luxury and natural splendor converge to create an unparalleled living experience.

- |  |  |   |   |   |   |
|--|--|---|---|---|---|
| <p><b>Setting</b></p> <ul style="list-style-type: none"> <li>✓ Country</li> <li>✓ Mountain Pueblo</li> <li>✓ Close To Golf</li> <li>✓ Close To Shops</li> <li>✓ Close To Town</li> <li>✓ Urbanisation</li> </ul>   | <p><b>Orientation</b></p> <ul style="list-style-type: none"> <li>✓ East</li> </ul>     | <p><b>Condition</b></p> <ul style="list-style-type: none"> <li>✓ Excellent</li> <li>✓ Recently Renovated</li> </ul> | <p><b>Pool</b></p> <ul style="list-style-type: none"> <li>✓ Communal</li> <li>✓ Indoor</li> <li>✓ Heated</li> </ul> | <p><b>Climate Control</b></p> <ul style="list-style-type: none"> <li>✓ Air Conditioning</li> <li>✓ Fireplace</li> </ul> | <p><b>Views</b></p> <ul style="list-style-type: none"> <li>✓ Mountain</li> <li>✓ Country</li> <li>✓ Urban</li> </ul>                    |
| <p><b>Features</b></p> <ul style="list-style-type: none"> <li>✓ Fitted Wardrobes</li> <li>✓ Private Terrace</li> <li>✓ Gym</li> <li>✓ Storage Room</li> <li>✓ Ensuite Bathroom</li> <li>✓ Jacuzzi</li> <li>✓ Double Glazing</li> <li>✓ Basement</li> </ul> | <p><b>Kitchen</b></p> <ul style="list-style-type: none"> <li>✓ Fully Fitted</li> </ul> | <p><b>Garden</b></p> <ul style="list-style-type: none"> <li>✓ Communal</li> <li>✓ Landscaped</li> </ul>             | <p><b>Security</b></p> <ul style="list-style-type: none"> <li>✓ Gated Complex</li> </ul>                            | <p><b>Parking</b></p> <ul style="list-style-type: none"> <li>✓ Garage</li> <li>✓ Private</li> </ul>                     | <p><b>Utilities</b></p> <ul style="list-style-type: none"> <li>✓ Electricity</li> <li>✓ Drinkable Water</li> <li>✓ Telephone</li> </ul> |
| <p><b>Category</b></p> <ul style="list-style-type: none"> <li>✓ Bargain</li> <li>✓ Cheap</li> <li>✓ Golf</li> <li>✓ Holiday Homes</li> <li>✓ Investment</li> <li>✓ Luxury</li> <li>✓ Resale</li> <li>✓ Contemporary</li> </ul>                             |  |   |   |   |   |