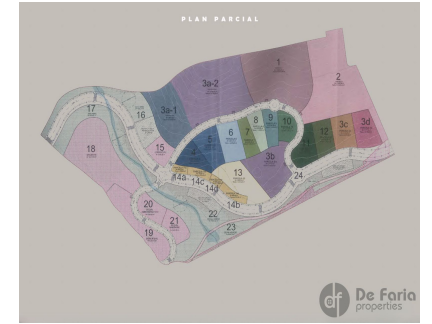
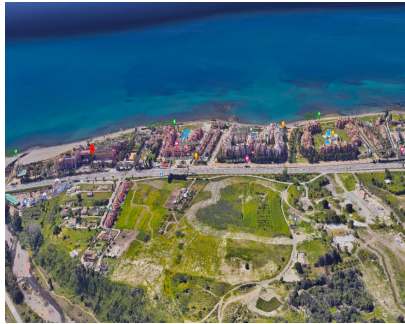


Sales - Plot - New Golden Mile
2.600.000€



Ref.-ID: MIBGR4223800

New Golden Mile

Plot

IBI: 1,536 EUR / year

 2380 m2

 3481 m2

LAST GREAT OPPORTUNITY FOR INVESTORS ONLY!! ONLY FEW PLOTS LEFT!! URBANIZABLE LANDS WITH SEA VIEWS IN THE NEW GOLDEN MILE - ESTEPONA Unique opportunity of those that are scarce in Costa del Sol, only for the fastest investors. License to build in place and possibility to build from 16 luxury apartments up to 120 luxury apartments in a "Pueblo Mediterraneo" type. These plots are very well situated, right in front of the famous 5 stars Hotel Kempinski, with walking distance and easy access to the beach, only 2 minutes driving to a luxury beach club Laguna Village, 2 minutes driving to a private Hospital, 4 minutes driving to Estepona town and close to all amenities like, bus stations, tax stops, restaurants, schools etc... Is in fact a fantastic opportunity for investors, so much so that in the very same area, there is a big development with properties prices starting from 420.000€ per apartment with their first phase and second phase already sold out, however they didn't even start to build it yet... Plots selling from 1.6M€ up to 2.6M€ DO NOT MISS THAT OPPORTUNITY!! IT WILL NOT STAY LONGER IN THE MARKET!! Plot 5 = 2.5M€ (SOLD) Plot size = 3278,12 m2 Buildability = 2240.74 m2 Nro of Apartments = 29 Plot 6 = 2.6M€ Plot size = 3481,37 m2 Buildability = 2379.67 m2 Nro of Apartments = 31 Plot 7 = 1.6M€ Plot size = 2000 m2 Buildability = 1262.58 m2 Nro of Apartments = 16 Plot 8 = 1.7M€ Plot size = 2000 m2 Buildability = 1349.21 m2 Nro of Apartments = 17 PLOTS 7/8/9 and 10 ARE UNDER RESERVATION!! Plot 9 = 1.6M€ Plot size = 2000 m2 Buildability = 1265.58 m2 Nro of Apartments = 16 Plot 10 = 1.8M€ Plot size = 2031,07 m2 Buildability = 1388.52 m2 Nro of Apartments = 18 NEW ON THE MARKET!! PLOT 12 Plot 12 = 2.2M€ - Plot size = 2645.57 m2 - Buildability = 1742.17m2 - Nro of apartments = 22 SEA VIEWS Plot 3C = 3.2M€ (SOLD) Plot 13 = 3.1 M€ (SOLD) Possibility to add 2 more plots...

- Setting**
 - ✓ Town
 - ✓ Close To Golf
 - ✓ Close To Shops
 - ✓ Close To Sea
 - ✓ Close To Town
 - ✓ Close To Schools
 - ✓ Close To Forest
 - ✓ Urbanisation
- Orientation**
 - ✓ South East
 - ✓ South
 - ✓ South West
- Condition**
 - ✓ Excellent
 - ✓ Renovation Required
 - ✓ Restoration Required
 - ✓ New Construction
- Pool**
 - ✓ Communal
 - ✓ Private
 - ✓ Indoor
 - ✓ Heated
 - ✓ Room For Pool
 - ✓ Children`s Pool
- Climate Control**
 - ✓ Air Conditioning
 - ✓ Pre Installed A/C
 - ✓ Hot A/C
 - ✓ Cold A/C
 - ✓ Central Heating
 - ✓ U/F/H Bathrooms
- Views**
 - ✓ Sea
 - ✓ Mountain
 - ✓ Beach
 - ✓ Panoramic
 - ✓ Garden
 - ✓ Pool
 - ✓ Urban
 - ✓ Forest
- Features**
 - ✓ Covered Terrace
 - ✓ Lift
 - ✓ Fitted Wardrobes
 - ✓ Near Transport
 - ✓ Private Terrace
 - ✓ Solarium
 - ✓ Satellite TV
 - ✓ WiFi
 - ✓ Storage Room
 - ✓ Ensuite Bathroom
 - ✓ Access for people with reduced mobility
 - ✓ Marble Flooring
 - ✓ Barbeque
 - ✓ Double Glazing
 - ✓ Near Mosque
 - ✓ Near Church
 - ✓ Fiber Optic
- Furniture**
 - ✓ Optional
- Kitchen**
 - ✓ Fully Fitted
- Garden**
 - ✓ Communal
 - ✓ Easy Maintenance
- Security**
 - ✓ Gated Complex
 - ✓ Electric Blinds
 - ✓ Entry Phone
 - ✓ Alarm System
 - ✓ 24 Hour Security
 - ✓ Safe
- Parking**
 - ✓ Underground
 - ✓ Garage
 - ✓ Covered
- Utilities**
 - ✓ Electricity
 - ✓ Drinkable Water
- Category**
 - ✓ Bargain
 - ✓ Beachfront
 - ✓ Cheap
 - ✓ Golf
 - ✓ Holiday Homes
 - ✓ Investment
 - ✓ Luxury
 - ✓ Off Plan
 - ✓ Reduced
 - ✓ Resale
 - ✓ With Planning Permission
 - ✓ Contemporary