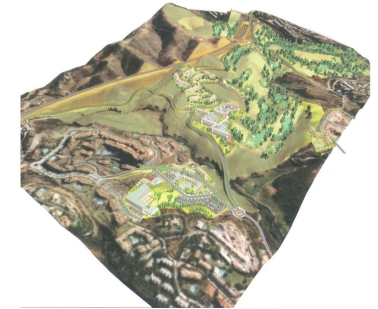
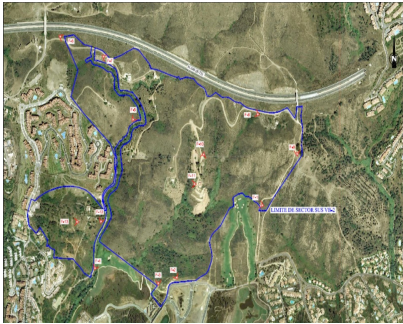
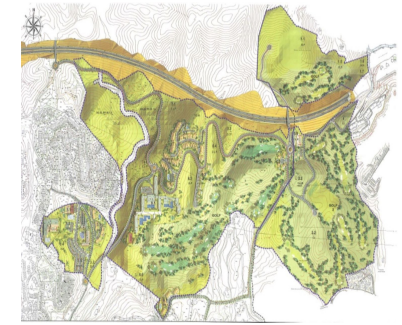
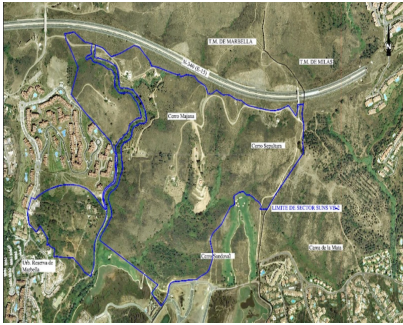


Sales - Plot - Las Chapas

2.146.000€



Ref.-ID: MIBGR4360702

Las Chapas

Plot



21458 m2

This sector has a total area of 710,458 m², of which 21,458 m² corresponds to this farm. It represents 3.02% of rights and obligations. The sector has a buildable area of 57,234.29 m² for Free Income Housing IN LOW DENSITY, 380 houses in Poblado Mediterráneo and 11 isolated houses. Buildable area of 40,362 m² for Hotels. 3,000 m² Economic Activities Golf Club and Commercial Area Which makes a total of 100,596.29 m² of surface area. Therefore $100,596.29 \text{ m}^2 \times 3.02\% = 3,038 \text{ m}^2$ of buildable area, which would correspond to this plot.

Orientation

- ✓ East
- ✓ South East
- ✓ South
- ✓ South West
- ✓ West

Views

- ✓ Sea
- ✓ Mountain
- ✓ Golf
- ✓ Panoramic

Category

- ✓ Resale