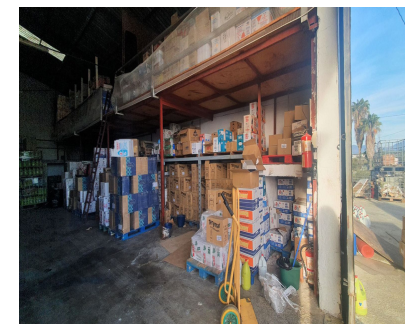
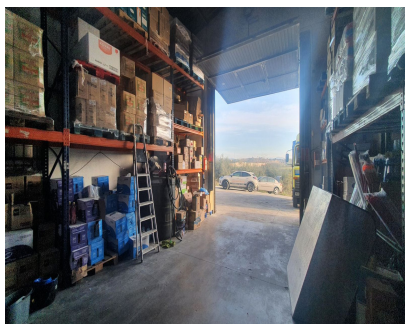
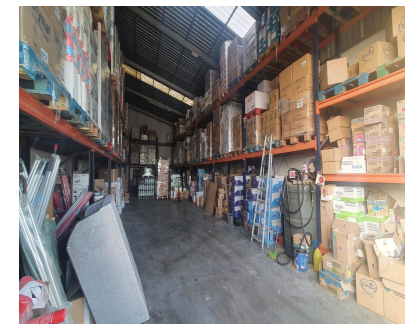


Sales - Commercial - Coín
295.000€



Ref.-ID: MIBGR4631353

Coín

Commercial

IBI: 314 EUR / year



1



567 m2



3000 m2

Rustic Plot with Industrial Warehouses in a 3,000m² plot with AFO Certification thus providing legal compliance. The entire property is securely fenced. Key Features: Two Industrial Warehouses: The property comprises two single-storey industrial warehouses with a 495m² total constructed area. Warehouse 1 Amenities: Includes a bathroom and an office space of approximately 11m² on a mezzanine level, accessed via stairs. Additional Storage Spaces: There are two warehouses and two covered sheds, totalling 145m² (computed at 50% covered area). Water Storage: The property boasts three cisterns with capacities of 60,000 litres, 20,000 litres, and 10,000 litres, in addition to well water and town water sources. Easy Access: The property is easily accessible, facilitating varied use of the installations.

Setting

- ✓ Country
- ✓ Close To Town

Parking

- ✓ Open
- ✓ More Than One
- ✓ Private

Orientation

- ✓ South

Utilities

- ✓ Electricity
- ✓ Drinkable Water

Condition

- ✓ Good

Category

- ✓ Investment
- ✓ Resale

Views

- ✓ Country

Furniture

- ✓ Not Furnished

Kitchen

- ✓ Not Fitted