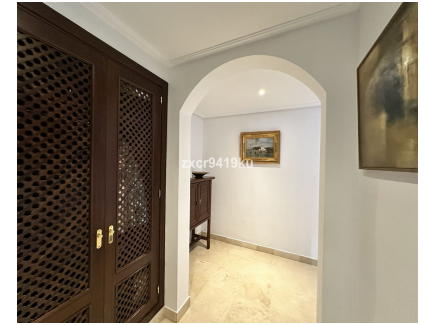


**Sales - Apartment - La Mairena**  
**425.000€**



**Ref.-ID: MIBGR4686574**

**La Mairena**

**Apartment**

**Community: 2,604 EUR / year IBI: 506 EUR / year**

**Rubbish: 130 EUR / year**



**2**



**2**



**171 m2**



**41 m2**

Stunning South-Facing Garden Apartment in La Mairena. Nestled within the picturesque landscape of La Mairena, this exquisite south-facing garden apartment offers a serene retreat surrounded by natural beauty. With its optimal orientation, you will indulge in abundant sunlight and breathtaking views throughout the day. Residents enjoy complimentary access to the superb El Soto leisure facilities, 9-Hole golf course, gym, spa, sauna, jacuzzi, paddle and tennis court and the wonderful restaurant on site which is a great meeting place for food and drinks. Underground secure parking and 12sqm storage room, This is one of the few south facing properties in the urbanisation, viewing is highly recommended.

<p><b>Setting</b></p> <ul style="list-style-type: none"> <li>✓ Close To Schools</li> <li>✓ Close To Forest</li> <li>✓ Urbanisation</li> </ul>	<p><b>Orientation</b></p> <ul style="list-style-type: none"> <li>✓ South</li> </ul>	<p><b>Condition</b></p> <ul style="list-style-type: none"> <li>✓ Excellent</li> </ul>	<p><b>Pool</b></p> <ul style="list-style-type: none"> <li>✓ Communal</li> <li>✓ Heated</li> <li>✓ Children`s Pool</li> </ul>	<p><b>Climate Control</b></p> <ul style="list-style-type: none"> <li>✓ Air Conditioning</li> <li>✓ Hot A/C</li> </ul>	<p><b>Views</b></p> <ul style="list-style-type: none"> <li>✓ Sea</li> <li>✓ Mountain</li> <li>✓ Panoramic</li> <li>✓ Garden</li> </ul>
<p><b>Features</b></p> <ul style="list-style-type: none"> <li>✓ Covered Terrace</li> <li>✓ Lift</li> <li>✓ Fitted Wardrobes</li> <li>✓ Private Terrace</li> <li>✓ WiFi</li> <li>✓ Gym</li> <li>✓ Sauna</li> <li>✓ Paddle Tennis</li> <li>✓ Tennis Court</li> <li>✓ Storage Room</li> <li>✓ Utility Room</li> <li>✓ Ensuite Bathroom</li> <li>✓ Access for people with reduced mobility</li> <li>✓ Marble Flooring</li> <li>✓ Jacuzzi</li> <li>✓ Bar</li> <li>✓ Double Glazing</li> <li>✓ Domotics</li> <li>✓ Restaurant On Site</li> <li>✓ Fiber Optic</li> </ul>	<p><b>Furniture</b></p> <ul style="list-style-type: none"> <li>✓ Not Furnished</li> </ul>	<p><b>Kitchen</b></p> <ul style="list-style-type: none"> <li>✓ Fully Fitted</li> </ul>	<p><b>Garden</b></p> <ul style="list-style-type: none"> <li>✓ Private</li> </ul>	<p><b>Security</b></p> <ul style="list-style-type: none"> <li>✓ Gated Complex</li> <li>✓ Electric Blinds</li> <li>✓ Entry Phone</li> <li>✓ Alarm System</li> <li>✓ Safe</li> </ul>	<p><b>Parking</b></p> <ul style="list-style-type: none"> <li>✓ Underground</li> </ul>
<p><b>Utilities</b></p> <ul style="list-style-type: none"> <li>✓ Electricity</li> <li>✓ Drinkable Water</li> <li>✓ Telephone</li> </ul>	<p><b>Category</b></p> <ul style="list-style-type: none"> <li>✓ Golf</li> <li>✓ Luxury</li> <li>✓ Resale</li> </ul>				