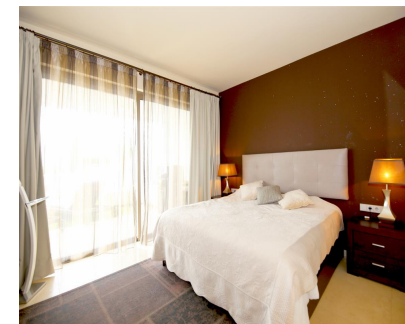


**Short Term Rental - Apartment - Benahavís**  
**825€ / Week**



Ref.-ID: MIBGR4784326

Benahavís

Apartment



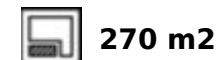
2



2



160 m2



270 m2

This stunning and modern ground floor apartment is an ideal property for those looking for some peace and quiet on a luxury boutique complex surrounding a famous five star hotel. The property offers a central air-conditioning system for cooling and heating and a high speed fiber optic internet connection along with plenty of international TV channels such as Sky. The apartment is presented in a modern style and has high standard, quality furnishings and fittings throughout. The lounge and dining area provides comfortable seating for up to six guests with direct access to the large patio terrace with an extra outdoor dining area and partial sea views. A gas powered barbecue is also available for your alfresco dining experience. The kitchen is very well equipped with all one could want for your holiday and both bedrooms have en-suite bathrooms. The master bedroom has a super king size bed (180x200cm) while the second bedroom has two single beds (90x200cm). The stunning communal swimming pools offer plenty of sun loungers surrounded by lovely gardens. A private parking space is available in the residential garage within the community. The apartment is located within the large and very popular Alanda Flamingos boutique complex close to several golf courses. There is easy private parking and 24 hour security in the area. The complex is located within the Los Flamingos golfing valley just behind the Villa Padierna hotel and there are plenty of golf courses and also a great restaurant in the hotel. The property is only a 10 minute drive to the beach and the main road to Benahavis, San Pedro, Estepona, Marbella and Puerto Banus. Here you will find the busy nightlife and designer shops and bars in the famous marina. All in all, a peaceful property for your holiday.

- |   |   |  |   |  |  |
|---|---|--|---|--|--|
| <b>Setting</b> <ul style="list-style-type: none"><li>✓ Close To Golf</li><li>✓ Close To Shops</li><li>✓ Close To Town</li></ul> | <b>Orientation</b> <ul style="list-style-type: none"><li>✓ South</li></ul>                | <b>Pool</b> <ul style="list-style-type: none"><li>✓ Communal</li></ul> | <b>Climate Control</b> <ul style="list-style-type: none"><li>✓ Air Conditioning</li></ul> | <b>Views</b> <ul style="list-style-type: none"><li>✓ Sea</li><li>✓ Golf</li><li>✓ Garden</li></ul> | <b>Features</b> <ul style="list-style-type: none"><li>✓ Lift</li><li>✓ Near Transport</li><li>✓ Barbeque</li></ul> |
| <b>Garden</b> <ul style="list-style-type: none"><li>✓ Communal</li><li>✓ Private</li></ul>                                      | <b>Parking</b> <ul style="list-style-type: none"><li>✓ Garage</li><li>✓ Private</li></ul> | <b>Category</b> <ul style="list-style-type: none"><li>✓ Golf</li></ul> |   |  |  |