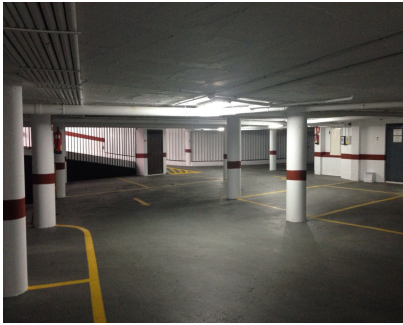


**Long Term Rental - Commercial - Benahavís**  
**60€ / Month**



**Ref.-ID: MIBGR4659205**

**Benahavís**

**Commercial**



**34 m2**

Unique opportunity in the heart of Benahavís! A large 30 m<sup>2</sup> garage in the prestigious urbanization. This garage, with capacity for a car and motorcycle, has an automatic entrance door that opens comfortably with a remote control, guaranteeing maximum security and comfort. Accessibility is unbeatable since it is located next to the elevator of the residential building, facilitating direct access from your home. In addition, its location is unbeatable: just 140 meters from the Daidin school, perfect for families looking for comfort and speed in their daily trips. Parking has never been easier thanks to its spacious and well-distributed design. Don't miss the opportunity to invest in a parking space that combines a privileged location, security and comfort. Contact us for more information and secure your visit today!

**Setting**

- ✓ Town
- ✓ Country
- ✓ Village
- ✓ Mountain Pueblo
- ✓ Close To Golf
- ✓ Close To Shops
- ✓ Close To Forest
- ✓ Urbanisation

**Orientation**

- ✓ East

**Condition**

- ✓ Excellent