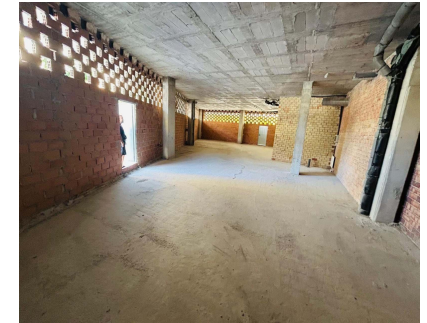


Long Term Rental - Commercial - San Pedro de Alcántara

5.850€ / Month



Ref.-ID: MIBGR4855534

San Pedro de Alcántara

Commercial



200 m2

There are 3 options to rent the whole premises or just the separate areas (that will have an independent entrances): 66 m2 - 2200€/month 103 m2 - 3800€/month 169 m2 - 5850€/month This is an exceptional opportunity to rent one of the best commercial premises in the brand-new Terra San Pedro complex. This corner unit is strategically located in the bustling area of San Pedro Alcántara, offering maximum visibility and accessibility. Situated near both the main pedestrian entrance and the parking entrance of the complex, your business will benefit from high foot traffic and easy access for customers. The premises are also clearly visible from the main road, ensuring that your business stands out to passersby and potential clients. This ideal location makes it perfect for a variety of commercial uses, whether you're planning to open a retail store, café, or office space.

Setting

✓ Town

Orientation

✓ East

Condition

✓ Renovation Required
✓ New Construction

Furniture

✓ Not Furnished

Kitchen

✓ Not Fitted

Utilities

✓ Electricity