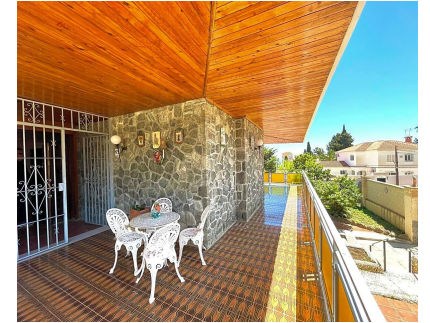


**Sales - House - Benalmadena Costa**  
**759.000€**

**www.mibgroup.es**  
**+34 662 58 96 58**  
**info@mibgroup.es**



**Ref.-ID: MIBGR4059757**

**Benalmadena Costa**

**House**

**IBI: 2,024 EUR / year**

**Rubbish: 175 EUR / year**



**4**



**4**



**489 m2**



**728 m2**

This villa built in the 70s has a unique style, it is in an ideal location, vary quiet but also at walking distance to shops, different businesses, the beach and aslo Benalmadena port. Very near is a beautiful renovated Orthodox church. Access to the house is via a beautiful porch with a wide terrace the surrounds the front part of the property. The terrace has no columns, a feat for the times. An entrance hall gives access to the fully equipped kitchen and leading on to a utility /Laundry room that gives side access to the pool area. On this floor there are 4 large bedrooms with fitted wardrobes and 2 bathrooms. one with a jacuzzi and one with a shower. The sitting room with leave you breathless for its size and Art deco style, with a magnificent Agata floor and stone fireplace, high ceilings,and direct access to the terrace. On the upper floor there is an enormous sitting room which leads you to the stunning teak wood terrace where there are stunning sea views. The house is in a large plot - 728m2 - with a large pool and a very big garage with room for various cars, another 2 bedrooms and 2 bathrooms to reform, creating the possibility of having a 2 bedroom apartment for guests, rental purposes etc. The property has had only One owner, who also collaborated with the architects in the design, this is a solid house built to last, good quality and ideal for those who appreciate superior quality materials, and large spaces and are ready to modernise to their own taste, conserving the soul and history of the property. In 2005 the kitchen was renovated as was the electricity and plumbing. DONT MISS OUT ON THIS OPPORTUNITY .

**Setting**

- ✓ Commercial Area
- ✓ Beachside
- ✓ Close To Port
- ✓ Close To Shops
- ✓ Close To Sea
- ✓ Close To Town
- ✓ Close To Marina

**Orientation**

- ✓ South West

**Condition**

- ✓ Good

**Pool**

- ✓ Private

**Climate Control**

- ✓ Air Conditioning
- ✓ Fireplace

**Views**

- ✓ Sea
- ✓ Mountain
- ✓ Garden

**Features**

- ✓ Covered Terrace
- ✓ Fitted Wardrobes
- ✓ Near Transport
- ✓ Private Terrace
- ✓ Storage Room
- ✓ Utility Room
- ✓ Ensuite Bathroom
- ✓ Double Glazing
- ✓ Courtesy Bus
- ✓ Near Church

**Furniture**

- ✓ Optional

**Kitchen**

- ✓ Fully Fitted
- ✓ Kitchen-Lounge

**Garden**

- ✓ Private

**Security**

- ✓ Gated Complex
- ✓ Entry Phone

**Parking**

- ✓ Garage
- ✓ Private

**Utilities**

- ✓ Electricity
- ✓ Drinkable Water
- ✓ Telephone

**Category**

- ✓ Beachfront
- ✓ Cheap
- ✓ Investment