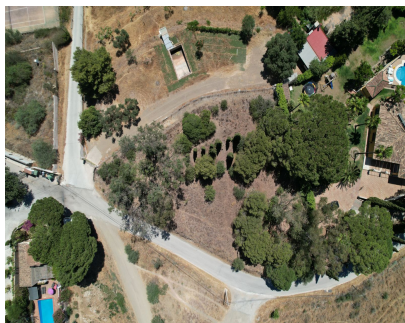


Sales - Plot - Mijas Costa
245.000€

www.mibgroup.es
+34 662 58 96 58
info@mibgroup.es



Ref.-ID: MIBGR4087684

Mijas Costa

Plot



2032 m2

Located near the Lew Hoad Tennis and Paddle Club, in a privileged location, with good access to the highway. Perfect to build two semi-detached houses or a villa with great detail. Quiet area with excellent views. "According to decree of the Junta de Andalucía 218-2005 of October 11, it is reported that notary, registry and ITP expenses are not included in the price"

Setting

- ✓ Close To Town

Orientation

- ✓ South East
- ✓ South West
- ✓ West
- ✓ North West

Views

- ✓ Sea
- ✓ Mountain
- ✓ Panoramic