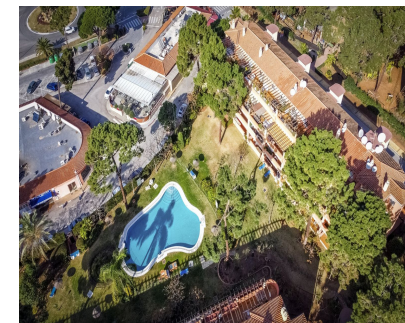
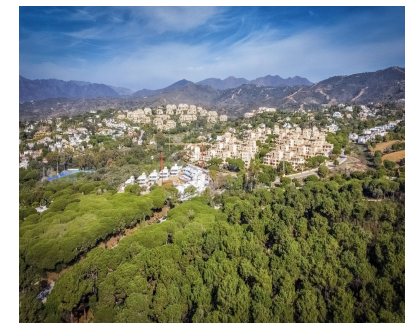


Sales - Apartment - Elviria  
490.000€

[www.mibgroup.es](http://www.mibgroup.es)  
+34 662 58 96 58  
[info@mibgroup.es](mailto:info@mibgroup.es)



Ref.-ID: MIBGR4607977

Elviria

Apartment

Community: 3,768 EUR / year



Reimagined Penthouse in Elviria, Marbella Nestled in the heart of Elviria, Marbella, this refined penthouse presents a sophisticated living experience on a single level. With lift access and a private hall area, this meticulously crafted residence seamlessly combines elegance with convenience. "This penthouse includes two parking spots and comes fully furnished, offering a seamless transition for immediate occupancy. Simply bring your own suitcase, as everything else is provided for your convenience." Upon entering, the penthouse welcomes you with a palette of serene white tones and an abundance of natural light, creating an inviting ambiance that beckons you towards the expansive outdoor area. The open-plan living space, seamlessly connected to a fully equipped kitchen, caters to culinary enthusiasts and provides direct access to an outdoor dining area with a barbecue, offering an enchanting setting for al fresco dining. The spacious living room features a tranquil and zen-like atmosphere, adorned with white furnishings and flooded with light through the large doors and windows. Step outside onto the fabulous sunny terrace, accompanied by a small garden with easy-going cacti, offering the potential for creating your own herb garden. Surrounded by majestic pine trees, this outdoor oasis becomes an ideal retreat for relaxation and entertainment. The master ensuite bedroom is a private sanctuary, featuring ample modern wardrobe space and an ensuite bathroom with a walk-in shower, perfect for unwinding in seclusion. The generously sized guest bedroom is complemented by fitted wardrobes, and its adjacent bathroom can function as both a guest toilet and a secondary bathroom. Additional features of this property include two underground parking spaces and a storeroom for added convenience. The complex boasts a communal garden and a swimming pool with sun loungers, providing an ideal setting for basking in the Mediterranean sun. Situated in a gated urbanization bordering a serene pine forest, this low-rise construction ensures tranquility and security. With all amenities and the beach within walking distance, this property is an ideal choice for permanent living or a holiday retreat. The interior of the penthouse is tastefully decorated with modern, peaceful elements, including cream marble flooring, and is equipped with air conditioning and heating for year-round comfort. Window shutters offer additional convenience and privacy. This penthouse in Elviria, Marbella, invites you to experience luxurious and stylish living in a prime location. Don't miss the opportunity to make it your own and savor the best of the Costa del Sol lifestyle.

- |  |  |   |   |   |  |
|--|--|---|---|---|--|
| <p><b>Setting</b></p> <ul style="list-style-type: none"> <li>✓ Close To Golf</li> <li>✓ Close To Sea</li> <li>✓ Close To Forest</li> <li>✓ Urbanisation</li> </ul>   | <p><b>Orientation</b></p> <ul style="list-style-type: none"> <li>✓ South</li> </ul>  | <p><b>Condition</b></p> <ul style="list-style-type: none"> <li>✓ Excellent</li> <li>✓ Recently Renovated</li> </ul> | <p><b>Pool</b></p> <ul style="list-style-type: none"> <li>✓ Communal</li> </ul>   | <p><b>Climate Control</b></p> <ul style="list-style-type: none"> <li>✓ Air Conditioning</li> <li>✓ Central Heating</li> </ul> | <p><b>Views</b></p> <ul style="list-style-type: none"> <li>✓ Garden</li> <li>✓ Pool</li> </ul>           |
| <p><b>Features</b></p> <ul style="list-style-type: none"> <li>✓ Covered Terrace</li> <li>✓ Fitted Wardrobes</li> <li>✓ Private Terrace</li> <li>✓ Ensuite Bathroom</li> <li>✓ Access for people with reduced mobility</li> <li>✓ Marble Flooring</li> <li>✓ Double Glazing</li> <li>✓ Fiber Optic</li> </ul> | <p><b>Furniture</b></p> <ul style="list-style-type: none"> <li>✓ Fully Furnished</li> </ul>  | <p><b>Kitchen</b></p> <ul style="list-style-type: none"> <li>✓ Fully Fitted</li> </ul>                              | <p><b>Garden</b></p> <ul style="list-style-type: none"> <li>✓ Communal</li> </ul> | <p><b>Security</b></p> <ul style="list-style-type: none"> <li>✓ Gated Complex</li> </ul>                                      | <p><b>Parking</b></p> <ul style="list-style-type: none"> <li>✓ Underground</li> <li>✓ Private</li> </ul> |
| <p><b>Utilities</b></p> <ul style="list-style-type: none"> <li>✓ Electricity</li> </ul>  | <p><b>Category</b></p> <ul style="list-style-type: none"> <li>✓ Holiday Homes</li> <li>✓ Investment</li> <li>✓ Luxury</li> <li>✓ Resale</li> </ul> |   |   |   |  |