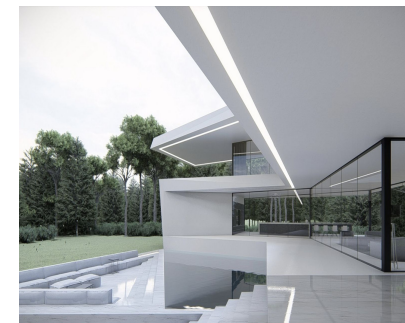


Sales - House - Benahavís
4.995.000€

www.mibgroup.es
+34 662 58 96 58
info@mibgroup.es



Ref.-ID: MIBGR4629586

Benahavís

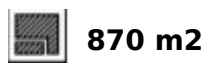
House



7



9



870 m2



5000 m2

OFF PLAN - CONTEMPORARY ECOLOGICAL VILLA IN LA QUINTA, BENAHAVIS IN URB. LOS ALMENDROS with panoramic views and views and on 6,5 km from the beach. The ground floor: entrance hall with lift, guest toilet, technical installations room, spacious living/dining room with large open plan fully fitted kitchen with Bosch appliances and separate pantry, furthermore there is on this floor a separate bedroom/study with en-suite bathroom, large, covered terraces overlooking the large 51,50 m2 heated swimming pool. On the first floor: lift, landing, master bedroom with master bathroom and large dressing room and of course a huge private terrace. A hallway leads you to another 3 bedrooms with 3 bathrooms wherefrom 1 ensuite and a terrace accessible for all 3 bedrooms. In the semi-basement, you have a huge carport with stairs with a path that leads you to the main entrance. Furthermore, the lift takes you to this floor where you find another bedroom with a bathroom ensuite, a separate apartment/bedroom and a games room. There is a completely separate flat which has a living/fitted kitchen/bedroom area, a dressing room and an ensuite bathroom. The separate flat is accessible from the garage but could also be accessed from the lift area. Construction time approx. 12 to 14 months after licenses. Pictures of bathrooms and kitchens are just examples of what they could look like, final choice will be that of the clients. Example of some of the specifications, - Interior and exterior floor tiles from GRESPANIA 600x600 - 800x800 - 1200x1200 (Color and size to choose) - Bathroom walls with COVERLAM plates (GRES PANIA) 2700X1200 (Color to choose) - Bathrooms from ROCA - VILLEROY BOCH - DURAVIT or similar - Aerothermia/airconditioning - Elevator from Schindler or similar - Underfloor heating in the full villa - Ceiling high windows with a sunken track, 5+5/chamber/6+6 - Ceiling high and 1-meter wide HPL interior doors, 30dB - Ceiling high pivot entrance door and 1,50 wide - Fully fitted kitchen with aluminum frame doors and covered with COVERLAM (Color to choose) - Island with COVERLAM 3600X1600 no visible joints (Colour to choose) - White goods from Bosch - AEG or MIELE - Heated pool with automatic cover - 20 solar panels - 3 lithium batteries of each 10kW - Car charger - Domotica We are a construction company, Key-in-Hand, that can design and construct any possibility you can think of. If you do not see a design of us that you like we design a totally new villa for you according to your ideas and input. Although we prefer to construct ecological building, we can construct from traditional construction to ecological constructions it all depends on you.

Setting

- ✓ Close To Golf
- ✓ Close To Shops
- ✓ Close To Town
- ✓ Close To Schools
- ✓ Urbanisation

Orientation

- ✓ East
- ✓ South East
- ✓ South West
- ✓ West

Condition

- ✓ New Construction

Pool

- ✓ Private
- ✓ Heated

Climate Control

- ✓ Air Conditioning
- ✓ Hot A/C
- ✓ Cold A/C
- ✓ Fireplace
- ✓ U/F Heating
- ✓ U/F/H Bathrooms

Views

- ✓ Mountain
- ✓ Country
- ✓ Panoramic
- ✓ Garden
- ✓ Pool
- ✓ Urban
- ✓ Street

Features

- ✓ Covered Terrace
- ✓ Lift
- ✓ Fitted Wardrobes
- ✓ Private Terrace
- ✓ WiFi
- ✓ Tennis Court
- ✓ Guest Apartment
- ✓ Guest House
- ✓ Storage Room
- ✓ Utility Room
- ✓ Ensuite Bathroom
- ✓ Access for people with reduced

Furniture

- ✓ Optional

Kitchen

- ✓ Fully Fitted

Garden

- ✓ Private
- ✓ Easy Maintenance

Security

- ✓ Entry Phone
- ✓ Alarm System
- ✓ Safe

Parking

- ✓ Underground
- ✓ Garage
- ✓ Covered
- ✓ Open
- ✓ More Than One
- ✓ Private

mobility

- ✓ Jacuzzi
- ✓ Barbeque
- ✓ Double Glazing
- ✓ Domotics
- ✓ Basement
- ✓ Fiber Optic

Utilities

- ✓ Electricity
- ✓ Drinkable Water
- ✓ Telephone
- ✓ Photovoltaic solar panels
- ✓ Solar water heating

Category

- ✓ Golf
- ✓ Holiday Homes
- ✓ Investment
- ✓ Luxury
- ✓ Off Plan
- ✓ Contemporary