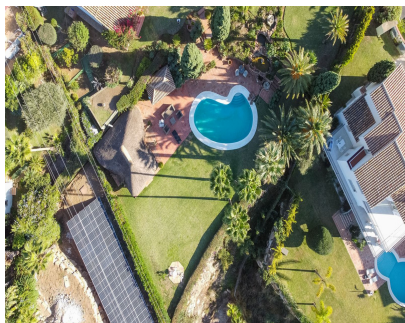


Sales - House - El Rosario  
**1.800.000€**

[www.mibgroup.es](http://www.mibgroup.es)  
**+34 662 58 96 58**  
[info@mibgroup.es](mailto:info@mibgroup.es)



Ref.-ID: MIBGR4644235

El Rosario

House



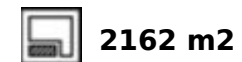
3



3



234 m2



2162 m2

Investment opportunity- LOOK NO FURTHER. We are presenting you with an investment opportunity in El Rosario- a huge double plot currently with a small hacienda bungalow-style Mediterranean house. The new owner can + Either build 2 houses as the plots are divided although currently is enjoying both as a huge garden +refurbishment project on the actual house + built a megamansion enjoying the massive garden with stunning views The massive garden with stunning views is one of the biggest in the area and is a rare find. The sought-after west orientation ensures spectacular sea and mountain views and stunning sunsets. This up-market area in Marbella East is a gated community with a limited number of villas, and there is a waiting list of buyers. Located in a hillside neighborhood, this property is just 10 minutes away from Marbella Center and 2 minutes away from the best beaches and popular beach venues. It's also just 2 minutes from the top 5 schools in Marbella and surrounded by golf courses and nature. In addition, there is a business center just 1 minute away and amenities nearby such as a supermarket, pharmacy, and offices. This is truly a must-see opportunity for anyone looking for a unique and special property in a prime location.

- |   |  |   |  |  |   |
|---|--|---|--|--|---|
| <b>Setting</b> <ul style="list-style-type: none"><li>✓ Close To Shops</li><li>✓ Close To Schools</li><li>✓ Urbanisation</li></ul> | <b>Orientation</b> <ul style="list-style-type: none"><li>✓ South West</li></ul>                            | <b>Condition</b> <ul style="list-style-type: none"><li>✓ Renovation Required</li></ul>    | <b>Pool</b> <ul style="list-style-type: none"><li>✓ Private</li></ul>        | <b>Views</b> <ul style="list-style-type: none"><li>✓ Sea</li><li>✓ Mountain</li><li>✓ Panoramic</li><li>✓ Garden</li></ul> | <b>Furniture</b> <ul style="list-style-type: none"><li>✓ Optional</li></ul> |
| <b>Garden</b> <ul style="list-style-type: none"><li>✓ Private</li><li>✓ Landscaped</li></ul>                                      | <b>Security</b> <ul style="list-style-type: none"><li>✓ Gated Complex</li><li>✓ 24 Hour Security</li></ul> | <b>Parking</b> <ul style="list-style-type: none"><li>✓ Garage</li><li>✓ Covered</li></ul> | <b>Category</b> <ul style="list-style-type: none"><li>✓ Investment</li></ul> |  |   |