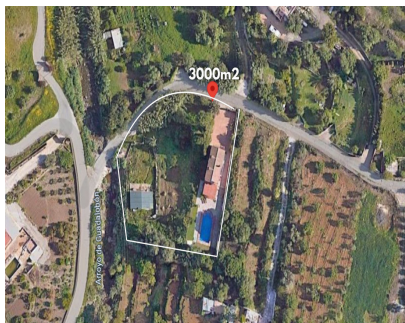


Sales - House - Estepona
625.000€

www.mibgroup.es
+34 662 58 96 58
info@mibgroup.es



Ref.-ID: MIBGR4676590

IBI: 405 EUR / year

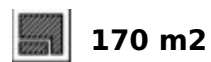
Estepona



3



2



170 m2

House



3000 m2

Imagine a retreat nestled in the heart of the countryside, where nature's embrace offers unbeatable views and an escape from the everyday. This enchanting home, just a mere 10-minute drive from the bustling Estepona coastline and the serene Playa del Cristo, combines the best of both worlds. Estepona's rich tapestry of amenities, including a hospital, schools, restaurants, and leisure centers, ensures that convenience is never far away. Step into a sanctuary designed for rest and reconnection. Positioned on the second floor, this residence boasts three elegantly appointed bedrooms, including a master suite that promises serene mornings and peaceful nights. The additional two bedrooms are generously sized, offering ample space for family or guests. The home is completed by two well-appointed bathrooms, ensuring privacy and comfort for all. Descending to the ground floor, the heart of the home reveals itself in a spacious living room, where a crackling fireplace adds warmth and charm. The adjacent large kitchen, complete with a pantry, unfolds into a cozy terrace. This inviting outdoor space beckons you to leisurely afternoons by the pool, amidst the breathtaking landscape and sweeping views of Estepona's countryside. The property's allure is enhanced by a charming wooden cabin on its grounds, presenting an ideal opportunity to create a guest house. The surrounding land, dotted with a variety of trees, offers the perfect canvas to cultivate your own garden, adding a personal touch to this idyllic setting. Embrace the opportunity to immerse yourself in the tranquility and discreet luxury that this Estepona home offers. Here, peace and discretion are not just qualities but a lifestyle, awaiting those who seek to experience the unique charm of this picturesque locale. Don't let this chance to own a slice of paradise slip away.

Setting

- ✓ Commercial Area
- ✓ Close To Town

Orientation

- ✓ South

Condition

- ✓ Excellent

Pool

- ✓ Private

Climate Control

- ✓ Air Conditioning
- ✓ Hot A/C
- ✓ Cold A/C

Views

- ✓ Mountain
- ✓ Panoramic
- ✓ Garden
- ✓ Pool

Features

- ✓ Covered Terrace
- ✓ Private Terrace
- ✓ Barbeque

Furniture

- ✓ Fully Furnished

Kitchen

- ✓ Fully Fitted

Garden

- ✓ Private

Security

- ✓ Alarm System

Parking

- ✓ Private

Utilities

- ✓ Electricity

Category

- ✓ Holiday Homes
- ✓ Investment