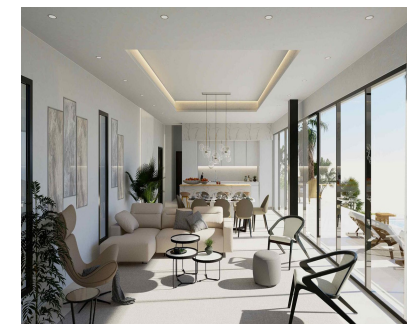


Sales - House - Elviria
1.295.000€

www.mibgroup.es
+34 662 58 96 58
info@mibgroup.es



Ref.-ID: MIBGR4681279

Elviria

House



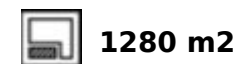
4



4



251 m2



1280 m2

LUXURY CONTEMPORARY TAILOR-MADE VILLA IN MARBELLA. Tailor made villa, can be customised to clients wishes, off plan price from. This contemporary 2-level villa is designed considering optimised distribution of space, natural illumination, and ventilation in all rooms, and with the perfect exploitation of each square meter of the house, which means - no wasted space or energy! The entrance of the villa opens into a spacious entrance hall with wardrobes, leading to the spacious living room with open plan kitchen with an integrated kitchen island. Large floor-to-ceiling energy efficient windows give you direct access to the pool and the garden area. There is also a guest toilet on the ground floor. A magnificent living room area has been designed to fully enjoy and contemplate the beautiful views that Costa del Sol has to offer. Floating glass staircase leads you to the upper floor where you will find large bedrooms and a lot of built-in wardrobe space. A master bedroom has an en-suite bathroom and a large walk-in wardrobe. There are many flexible options for you as the buyer of this project. You can add a full basement with cinema room/ game room, laundry room, separate kitchen, wine cellar, sauna and possibility to make extra rooms as well. The villa is also designed so you can easily make a 4th bedroom on the ground level. The outside area offers spacious covered terraces, a beautiful private pool and a landscaped garden plus your own private parking space for two cars, connected to the villa.

Orientation

✓ South

Condition

✓ New Construction

Pool

✓ Private

Climate Control

✓ Air Conditioning

✓ Hot A/C

Views

✓ Panoramic

Features

✓ Private Terrace

Kitchen

✓ Fully Fitted

Garden

✓ Private

Parking

✓ Private

Utilities

✓ Electricity

Category

✓ Off Plan