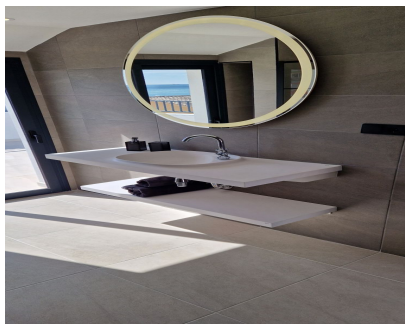
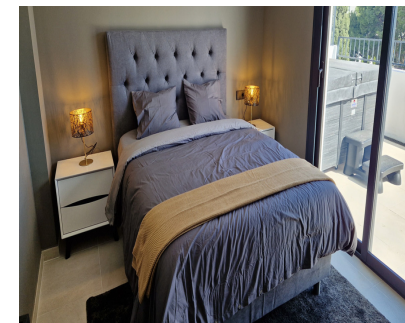


Sales - Apartment - Benalmadena Costa
990.000€

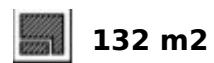
www.mibgroup.es
+34 662 58 96 58
info@mibgroup.es



Ref.-ID: MIBGR4695061

Benalmadena Costa

Apartment



La Playa 2.47 is situated on one of the last available plots for residential development in Benalmádena Costa, nestled within a serene residential area surrounded by restaurants, parks, golf courses, beaches, dunes, and sea views. The development boasts the distinctive feature of being right in the midst of action yet maintains a tranquil and peaceful ambiance. All kinds of facilities are within walking distance. Whatever you need, it's there. The walking distance to the beach is precisely 2 minutes and 47 seconds, hence the name, La Playa 2.47, or "The Beach 2.47" if you prefer. The apartments feature the following quality specifications: Apartment 413 comprises 3 bedrooms. Electric underfloor heating in bathrooms and living area. Air conditioning (hot/cold) in bedrooms and living room. Light-colored 60 x 60 cm flooring. Walls plastered in living areas, standard in gray color, but other colors are possible. Kitchen includes induction hob, oven, fridge/freezer, and dishwasher. All apartments will feature soundproofing between floors and quality double-glazed windows. There will be an elevator from the underground parking to each apartment floor. Each apartment comes with 2 parking spaces and 1 storage room. Additional parking spaces can be purchased at a price of EUR 15,000 each. Bathroom appliances will be Roca or similar. BBQ on the terrace and pre-installation for a jacuzzi. The community will feature a swimming pool area and BBQ zone. There will also be a playground on the lower level. The idea is for La Playa 2.47 to become a family-friendly resort for year-round enjoyment, close to the beach and all amenities in beautiful Benalmádena Costa.

Setting

- ✓ Beachside
- ✓ Village
- ✓ Close To Port
- ✓ Close To Shops
- ✓ Close To Schools

Features

- ✓ Lift
- ✓ Storage Room

Orientation

- ✓ South East
- ✓ South
- ✓ South West

Furniture

- ✓ Not Furnished

Condition

- ✓ Excellent
- ✓ New Construction

Kitchen

- ✓ Fully Fitted

Pool

- ✓ Communal

Garden

- ✓ Communal

Climate Control

- ✓ Air Conditioning
- ✓ U/F Heating

Parking

- ✓ Garage
- ✓ More Than One

Views

- ✓ Sea
- ✓ Panoramic
- ✓ Urban