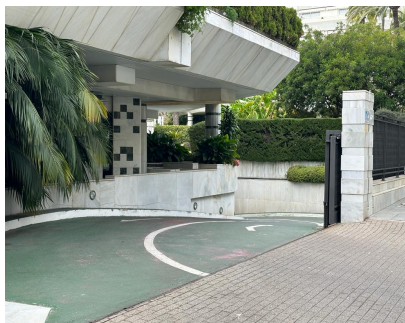


Sales - Commercial - Marbella
53.000€

www.mibgroup.es
+34 662 58 96 58
info@mibgroup.es



Ref.-ID: MIBGR4778875

Marbella

Commercial

Community: 2,700 EUR / year

IBI: 280 EUR / year

 36 m2

 36 m2

Three parking spaces for sale in the Nayade Building, located in Playa de la Fontanilla in Marbella. They can be purchased only together. The parking spaces are adjacent (numbers 9, 10 & 11). The strategic location of the Nayade Building provides quick and easy access to Marbella center, the beach, and the promenade, offering a comfortable and stylish lifestyle. Additionally, the building features high-end amenities, including a surveillance system with cameras and access control, a 24-hour concierge, and continuous access with a remote control. The added convenience of car wash services is also available. These parking spaces not only stand out for their size but also for their luxurious surroundings and nearby amenities. Within a few minutes' walk, prestigious private schools such as the British International School and Swans International School can be found. Well-known supermarkets, such as El Corte Inglés, are conveniently located, facilitating daily shopping. For those concerned about physical well-being, the Plaza del Mar Wellness Center offers two pools, a sauna, a spa, fitness rooms, and group activities, along with a physiotherapy unit. Note: maximum height of the parking space is 1,85 m Community fees per parking: 75€ / mes (225€ for three) AGB