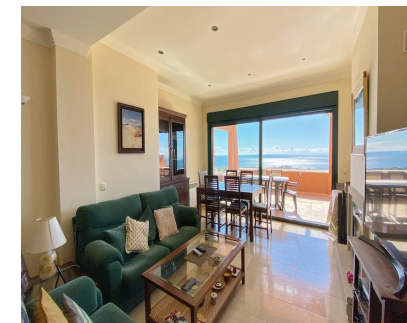


Sales - Apartment - Marbella
580.000€

www.mibgroup.es
+34 662 58 96 58
info@mibgroup.es



Ref.-ID: MIBGR4862410

Marbella

Apartment

Community: 3,840 EUR / year

IBI: 980 EUR / year

Rubbish: 185 EUR / year



2



2



136 m2

Exclusive 2 bedroom/2 bathroom penthouse in the luxurious complex EL LAGAR DEL ROSARIO. A very exclusive complex of only 18 homes, with an ideal location for those who enjoy maximum tranquility and privacy. Located in the highest part of the El Rosario Urbanization. The complex has large common areas, communal parking areas for guests, with beautiful garden areas around the complex and a large saltwater pool, and all this surrounded by nature. Built with top quality materials and everything is kept in a perfect state of conservation. The house consists of 2 bedrooms and 2 full bathrooms. The fully equipped kitchen has a laundry room. A generous living room with a fireplace leads to a fantastic covered terrace from where you have the best open views along the entire coast with the sea in the background. Direct views over the golf course, you can also clearly see the coast of Africa and the sunsets. It has an underground parking space and a storage room.

Setting

- ✓ Close To Port
- ✓ Close To Shops
- ✓ Close To Sea
- ✓ Close To Town
- ✓ Close To Schools
- ✓ Close To Forest
- ✓ Urbanisation

Features

- ✓ Covered Terrace
- ✓ Lift
- ✓ Fitted Wardrobes
- ✓ Private Terrace
- ✓ Storage Room
- ✓ Utility Room
- ✓ Ensuite Bathroom
- ✓ Marble Flooring
- ✓ Double Glazing

Utilities

- ✓ Electricity
- ✓ Drinkable Water
- ✓ Telephone
- ✓ Gas

Orientation

- ✓ South
- ✓ South West

Furniture

- ✓ Optional

Category

- ✓ Resale

Condition

- ✓ Excellent

Kitchen

- ✓ Fully Fitted

Pool

- ✓ Communal

Garden

- ✓ Communal

Climate Control

- ✓ Pre Installed A/C
- ✓ Fireplace

Security

- ✓ Gated Complex
- ✓ Electric Blinds
- ✓ Entry Phone
- ✓ Alarm System

Views

- ✓ Sea
- ✓ Mountain
- ✓ Golf
- ✓ Country
- ✓ Panoramic
- ✓ Forest

Parking

- ✓ Underground
- ✓ Garage
- ✓ Private