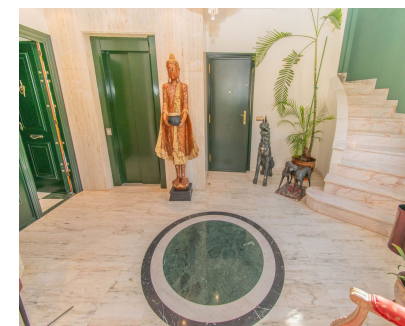
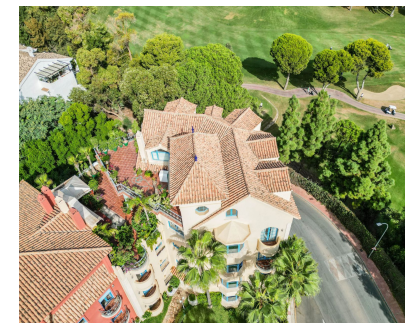


Sales - Apartment - Torrequebrada  
**1.085.000€**

[www.mibgroup.es](http://www.mibgroup.es)  
**+34 662 58 96 58**  
[info@mibgroup.es](mailto:info@mibgroup.es)



Ref.-ID: MIBGR4870636

Torrequebrada

Apartment

Community: 4,404 EUR / year

IBI: 2,249 EUR / year



5



3



497 m2

Exclusive with FIRST CLASS HOMES - Luxury duplex penthouse, with a rental license, located in front of the Torrequebrada Golf Course, with panoramic views of the sea, the mountains and the golf course. Elegant and exclusive set with very good maintenance. Probably the best penthouse in Benalmádena Costa! 1st floor: Entrance hall, guest bathroom, separate fully equipped kitchen, double bedroom with direct access to the main terrace, 1 double bedroom with a small balcony, spacious living room and dining area, master bedroom with dressing area, private balcony and on suite bathroom with Jacuzzi, sunny terrace with BBQ area, loving sitting area. Upstairs: Attic of 130m2 with a full bathroom , 2 bedrooms ( one has direct access to the terrace) The access to the property (1st floor) is by lift with a private code that also takes you to the garage. The second floor is accessed by stairs from this same floor. The main terrace (1st floor) has a large BBQ area with lovely sitting area surrounded with lovely plants. The upper terrace is a bit smaller and private. Both terraces are southwest orientation and offer amazing views of the golf, sea, pool and gardens of the urbanization and mountains. The property is immaculate condition with marble floors from Cascai, Portugal., double glazed windows, central air conditioning hot/cold throughout the property. It is sold fully furnished with high quality furniture and decorative objects brought from different countries in Asia and with an underground private parking space. ONE OF A KIND - PROPERTY DEFINITELY WORTH IT Total Build size: 497m2 Living area: 336m2 Terraces: 160m2 IBI:2.249€ per year – Community fees: 376€ per month – Year of construction: 2003

<b>Setting</b> ✓ Frontline Golf ✓ Close To Golf ✓ Close To Sea	<b>Orientation</b> ✓ North ✓ North East ✓ East ✓ South East ✓ South ✓ South West	<b>Condition</b> ✓ Excellent	<b>Pool</b> ✓ Communal	<b>Climate Control</b> ✓ Air Conditioning ✓ Hot A/C ✓ Cold A/C	<b>Views</b> ✓ Sea ✓ Mountain ✓ Golf ✓ Country ✓ Panoramic ✓ Pool ✓ Street
<b>Features</b> ✓ Covered Terrace ✓ Lift ✓ Fitted Wardrobes ✓ Near Transport ✓ Private Terrace ✓ WiFi ✓ Marble Flooring ✓ Jacuzzi ✓ Barbeque ✓ Double Glazing ✓ Fiber Optic	<b>Furniture</b> ✓ Fully Furnished	<b>Kitchen</b> ✓ Fully Fitted	<b>Garden</b> ✓ Communal	<b>Security</b> ✓ Entry Phone ✓ 24 Hour Security	<b>Parking</b> ✓ Underground ✓ Garage ✓ Private
<b>Utilities</b> ✓ Electricity ✓ Drinkable Water ✓ Telephone	<b>Category</b> ✓ Luxury ✓ Resale				