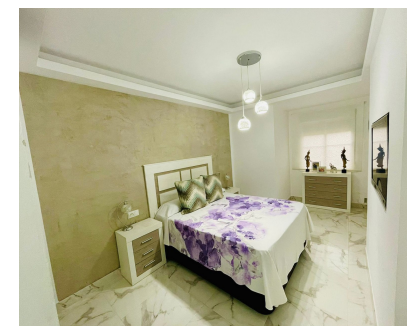
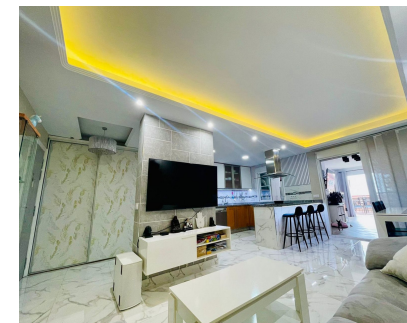


Sales - Apartment - Estepona  
379.000€

www.mibgroup.es  
+34 662 58 96 58  
info@mibgroup.es



Ref.-ID: MIBGR4875724

Estepona

Apartment



Wonderful apartment with a huge terrace and views to Gibraltar just above the new attractive Orchidarium park in Estepona just above the old town. This incredible apartment has been refurbished to a totally modern look with open kitchen, modern furniture and ceiling lighting in the living room etc..it s most attractive point is the 75m2 size terrace with views over the whole town and until to Gibraltar from the terrace and the second living room with thie same fantastic views is situated just between the main living room and the terrace, enough space to create more rooms in the flat or make it a huge living room. The spacious main doble bedroom has its nice bathroom en suite and the second bedroom is a little smaller but enought space for a desk and the bed and both have fitted wardrobes and the second bathroom with a jacuzzi . The apartment offers a private parking space and also a storage space within the price included. From this apartment you can walk in 5 minutes to the beautiful Orchidarium park of Estepona and from there another 10 minutes down to th eseafront with the newly achanged beachfront promenade free of cars and full of cafes and restaurants next to the sea. The distance to Puerto Banus is only 20 minutes drive and to Marbella about 30 minutes, when you come from the international airport Malaga it would take you 1 hour on the highway.

<b>Setting</b> <ul style="list-style-type: none"><li>✓ Town</li><li>✓ Commercial Area</li><li>✓ Close To Shops</li><li>✓ Close To Sea</li><li>✓ Close To Schools</li></ul>	<b>Orientation</b> <ul style="list-style-type: none"><li>✓ South</li></ul>	<b>Condition</b> <ul style="list-style-type: none"><li>✓ Good</li></ul>	<b>Pool</b> <ul style="list-style-type: none"><li>✓ Communal</li></ul>	<b>Climate Control</b> <ul style="list-style-type: none"><li>✓ Air Conditioning</li></ul>	<b>Views</b> <ul style="list-style-type: none"><li>✓ Sea</li><li>✓ Mountain</li><li>✓ Country</li><li>✓ Panoramic</li></ul>
<b>Features</b> <ul style="list-style-type: none"><li>✓ Lift</li><li>✓ Private Terrace</li><li>✓ Ensuite Bathroom</li></ul>	<b>Furniture</b> <ul style="list-style-type: none"><li>✓ Fully Furnished</li></ul>	<b>Kitchen</b> <ul style="list-style-type: none"><li>✓ Fully Fitted</li></ul>	<b>Garden</b> <ul style="list-style-type: none"><li>✓ Communal</li></ul>	<b>Utilities</b> <ul style="list-style-type: none"><li>✓ Electricity</li><li>✓ Telephone</li></ul>	<b>Category</b> <ul style="list-style-type: none"><li>✓ Investment</li></ul>