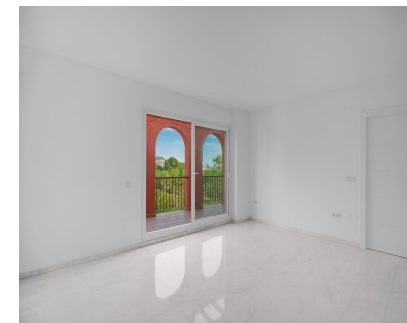




Sales - Apartment - Benalmadena  
260.000€

[www.mibgroup.es](http://www.mibgroup.es)  
+34 662 58 96 58  
[info@mibgroup.es](mailto:info@mibgroup.es)



Ref.-ID: MIBGR4883515

Benalmadena

Apartment



2



2



83 m2

Discover the charm of this lovely apartment located in the sought-after Torrequebrada area. This spacious home offers two comfortable bedrooms and two well-appointed bathrooms. The bright terrace provides breathtaking views of the golf course and surrounding mountains. Enjoy the convenience of a dedicated parking space and a storage room, ensuring ample space for all your needs. The urbanisation boasts beautifully landscaped areas, two recently renovated communal pools, and a state-of-the-art gym. A social club offers a hub for activities with family and friends, enhancing the community feel. Situated just 500 metres from the beach and close to the prestigious Torrequebrada Golf Course, this apartment is ideal for those seeking tranquility with excellent transport links. Nearby amenities include supermarkets, ATMs, pharmacies, and more. Whether you're looking for a serene place to call home or a lucrative investment opportunity, this property is suitable for both residential living and tourist rentals. With its prime location near leisure areas, playgrounds, and the esteemed International School of Torrequebrada, this apartment is a perfect choice for families and investors alike. Don't miss out on this exceptional opportunity to own a piece of paradise in Torrequebrada!

- |  |  |   |  |   |  |
|--|--|---|--|---|--|
| <b>Setting</b> <ul style="list-style-type: none"><li>✓ Frontline Golf</li><li>✓ Town</li><li>✓ Close To Golf</li><li>✓ Close To Shops</li><li>✓ Close To Schools</li><li>✓ Urbanisation</li></ul>  | <b>Orientation</b> <ul style="list-style-type: none"><li>✓ East</li><li>✓ South East</li></ul> | <b>Condition</b> <ul style="list-style-type: none"><li>✓ Recently Renovated</li></ul> | <b>Pool</b> <ul style="list-style-type: none"><li>✓ Communal</li></ul>   | <b>Climate Control</b> <ul style="list-style-type: none"><li>✓ Air Conditioning</li></ul> | <b>Views</b> <ul style="list-style-type: none"><li>✓ Mountain</li><li>✓ Golf</li></ul> |
| <b>Features</b> <ul style="list-style-type: none"><li>✓ Lift</li><li>✓ Near Transport</li><li>✓ Private Terrace</li><li>✓ Gym</li><li>✓ Storage Room</li></ul>   | <b>Furniture</b> <ul style="list-style-type: none"><li>✓ Not Furnished</li></ul>               | <b>Kitchen</b> <ul style="list-style-type: none"><li>✓ Not Fitted</li></ul>           | <b>Garden</b> <ul style="list-style-type: none"><li>✓ Communal</li></ul> | <b>Security</b> <ul style="list-style-type: none"><li>✓ Gated Complex</li></ul>           | <b>Parking</b> <ul style="list-style-type: none"><li>✓ Underground</li></ul>           |
| <b>Category</b> <ul style="list-style-type: none"><li>✓ Bargain</li><li>✓ Beachfront</li><li>✓ Cheap</li><li>✓ Distressed</li><li>✓ Golf</li><li>✓ Holiday Homes</li><li>✓ Investment</li><li>✓ Luxury</li><li>✓ Off Plan</li><li>✓ Reduced</li><li>✓ Resale</li><li>✓ With Planning Permission</li><li>✓ Contemporary</li></ul> |  |   |  |   |  |