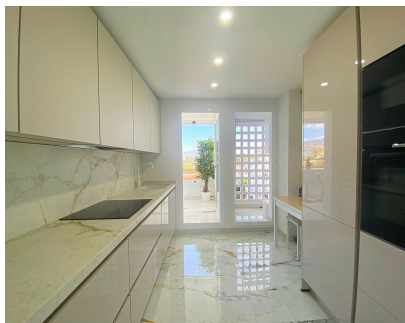


Sales - Apartment - Estepona  
525.000€

[www.mibgroup.es](http://www.mibgroup.es)  
+34 662 58 96 58  
[info@mibgroup.es](mailto:info@mibgroup.es)



Ref.-ID: MIBGR4894855

Estepona

Apartment



2



2



98 m2

Welcome to your dream penthouse in the stunning Selvo Estepona area! This bright and airy residence boasts two spacious bedrooms and two luxurious bathrooms, making it perfect for families or those who love to entertain. With three terraces offering breathtaking views of the sea, Gibraltar, and the majestic mountains, you'll find yourself captivated by the beauty that surrounds you. Just a short 500 meters from the beach, this penthouse has been completely renovated and furnished with an exclusive, elegant, and glamorous design. High-quality materials and luxury furniture create a sophisticated atmosphere, while LED lighting and a sleek marble floor add a modern touch. The heart of this penthouse is undoubtedly the modern German kitchen, equipped with top-of-the-line Bosch appliances. It features its own terrace with Lumon glazing, where you can enjoy breakfast while soaking in the stunning views. The expansive 24 m<sup>2</sup> terrace is perfect for hosting gatherings or simply relaxing under the sun, with half of it covered for those who prefer some shade. Living in this gated community means you'll have access to fantastic amenities, including a large swimming pool, lush gardens, a sauna, and a gym. Located just a five-minute drive from Estepona, two minutes from the beach, and one minute from the American Atlas school, this penthouse offers both tranquility and convenience. Plus, an underground parking space and a storage room are included in the price, making this an unbeatable opportunity for luxury living!

- |   |  |  |  |   |  |
|---|--|--|--|---|--|
| <b>Setting</b> <ul style="list-style-type: none"><li>✓ Beachside</li><li>✓ Close To Port</li><li>✓ Close To Shops</li><li>✓ Close To Sea</li><li>✓ Close To Town</li><li>✓ Close To Schools</li><li>✓ Close To Marina</li></ul> | <b>Orientation</b> <ul style="list-style-type: none"><li>✓ East</li><li>✓ South</li><li>✓ West</li></ul> | <b>Condition</b> <ul style="list-style-type: none"><li>✓ Excellent</li></ul> | <b>Climate Control</b> <ul style="list-style-type: none"><li>✓ Air Conditioning</li></ul>                | <b>Views</b> <ul style="list-style-type: none"><li>✓ Sea</li><li>✓ Mountain</li></ul>                                 | <b>Features</b> <ul style="list-style-type: none"><li>✓ Covered Terrace</li><li>✓ Lift</li><li>✓ Fitted Wardrobes</li><li>✓ Near Transport</li><li>✓ Private Terrace</li><li>✓ Ensuite Bathroom</li><li>✓ Marble Flooring</li><li>✓ Double Glazing</li></ul> |
| <b>Furniture</b> <ul style="list-style-type: none"><li>✓ Optional</li></ul>   | <b>Kitchen</b> <ul style="list-style-type: none"><li>✓ Fully Fitted</li></ul>                            | <b>Parking</b> <ul style="list-style-type: none"><li>✓ Underground</li></ul> | <b>Utilities</b> <ul style="list-style-type: none"><li>✓ Electricity</li><li>✓ Drinkable Water</li></ul> | <b>Category</b> <ul style="list-style-type: none"><li>✓ Holiday Homes</li><li>✓ Investment</li><li>✓ Luxury</li></ul> |  |