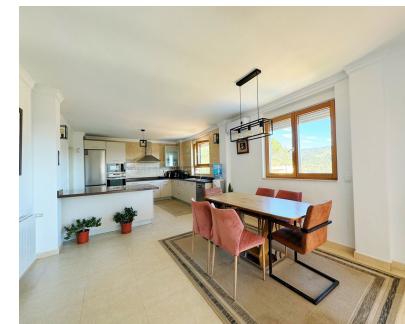


Sales - House - Elviria  
**1.450.000€**

[www.mibgroup.es](http://www.mibgroup.es)  
**+34 662 58 96 58**  
[info@mibgroup.es](mailto:info@mibgroup.es)



Ref.-ID: MIBGR4902220

Elviria

House



8



7



543 m2



1062 m2

This villa in Santa Maria Golf, Elviria, is an expansive and large home with 8 bedrooms and 7 bathrooms, offering an exceptional blend of practicality. Set on a 1,062 m<sup>2</sup> plot with 543 m<sup>2</sup> of interior space spread across three levels, it's perfectly suited for families, friends, or groups seeking space, comfort, and lifestyle. The villa is designed to make the most of its stunning surroundings. An open-plan kitchen and dining area lead out to a covered terrace with views of the Mediterranean Sea and nearby golf course. The outdoor areas offer a private pool, gardens, and an African-style gazebo complete with an outdoor kitchen and barbecue—ideal for entertaining or relaxing. Inside, 8 spacious bedrooms, 6 with en-suite bathrooms, provide ample privacy for all occupants. The villa also features air conditioning and heating with individualized controls for each room, ensuring year-round comfort. There are two entrances—one from the main avenue and another backing onto the golf area—as well as parking for up to five cars. The location is unmatched. The villa is just a short walk from Elviria's commercial center, international schools, and some of Marbella's most beautiful beaches. Plage Casanis and Nikki Beach are only a few minutes away, while Marbella town, La Cañada Comercial Center and Puerto Banús, with their high-end shops, restaurants, and lively nightlife, are within a 15-minute drive. Malaga Airport is just 25 minutes away, making travel simple and convenient. Viewing highly recommended!

- |   |  |  |  |  |  |
|---|--|--|--|--|--|
| <p><b>Setting</b></p> <ul style="list-style-type: none"> <li>✓ Suburban</li> <li>✓ Commercial Area</li> <li>✓ Close To Golf</li> <li>✓ Close To Shops</li> <li>✓ Close To Sea</li> <li>✓ Close To Schools</li> <li>✓ Close To Forest</li> <li>✓ Urbanisation</li> </ul>   | <p><b>Orientation</b></p> <ul style="list-style-type: none"> <li>✓ East</li> <li>✓ South East</li> <li>✓ West</li> </ul> | <p><b>Condition</b></p> <ul style="list-style-type: none"> <li>✓ Good</li> </ul>                                 | <p><b>Pool</b></p> <ul style="list-style-type: none"> <li>✓ Private</li> </ul>   | <p><b>Climate Control</b></p> <ul style="list-style-type: none"> <li>✓ Air Conditioning</li> <li>✓ Pre Installed A/C</li> <li>✓ Hot A/C</li> <li>✓ Cold A/C</li> </ul> | <p><b>Views</b></p> <ul style="list-style-type: none"> <li>✓ Sea</li> <li>✓ Mountain</li> <li>✓ Golf</li> <li>✓ Panoramic</li> <li>✓ Garden</li> <li>✓ Pool</li> </ul> |
| <p><b>Features</b></p> <ul style="list-style-type: none"> <li>✓ Covered Terrace</li> <li>✓ Fitted Wardrobes</li> <li>✓ Near Transport</li> <li>✓ Private Terrace</li> <li>✓ Solarium</li> <li>✓ Satellite TV</li> <li>✓ WiFi</li> <li>✓ Gym</li> <li>✓ Games Room</li> <li>✓ Storage Room</li> <li>✓ Utility Room</li> <li>✓ Ensuite Bathroom</li> <li>✓ Jacuzzi</li> <li>✓ Barbeque</li> <li>✓ Double Glazing</li> <li>✓ Car Hire Facility</li> <li>✓ Near Church</li> <li>✓ Basement</li> </ul> | <p><b>Furniture</b></p> <ul style="list-style-type: none"> <li>✓ Fully Furnished</li> </ul>                              | <p><b>Kitchen</b></p> <ul style="list-style-type: none"> <li>✓ Fully Fitted</li> <li>✓ Kitchen-Lounge</li> </ul> | <p><b>Garden</b></p> <ul style="list-style-type: none"> <li>✓ Private</li> </ul> | <p><b>Security</b></p> <ul style="list-style-type: none"> <li>✓ Electric Blinds</li> <li>✓ Entry Phone</li> <li>✓ Alarm System</li> <li>✓ 24 Hour Security</li> </ul>  | <p><b>Parking</b></p> <ul style="list-style-type: none"> <li>✓ Garage</li> <li>✓ Covered</li> <li>✓ Open</li> <li>✓ More Than One</li> <li>✓ Private</li> </ul>        |
| <p><b>Utilities</b></p> <ul style="list-style-type: none"> <li>✓ Electricity</li> <li>✓ Drinkable Water</li> <li>✓ Telephone</li> </ul>   | <p><b>Category</b></p> <ul style="list-style-type: none"> <li>✓ Investment</li> <li>✓ Resale</li> </ul>                  |  |  |  |  |