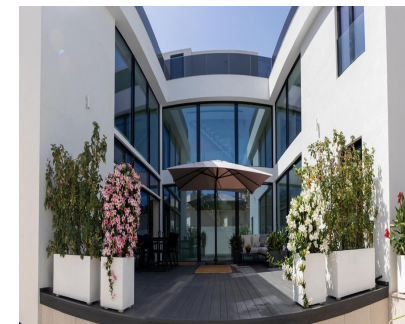


Sales - House - Benalmadena
2.600.000€

www.mibgroup.es
+34 662 58 96 58
info@mibgroup.es



Ref.-ID: MIBGR4907440

Benalmadena

House



5



5



380 m2



960 m2

NEW BUILD MODERN VILLA with Elevator, suitable for people with special needs!! This spectacular newly built 5-bedroom villa is located in Benalmádena in the prestigious Solymar-Puerto Marina area, a perfect place for those seeking luxury and comfort. It has 5 bedrooms, 4 of them en-suite, with high-quality finishes and windows offering plenty of natural light. The villa is sold fully furnished. The open-concept kitchen is equipped with high-end appliances and integrates perfectly with the living room, which has access to a large private terrace, creating an ideal space. The house features underfloor heating through an advanced aerothermal climate control system, ensuring energy efficiency and sustainability, and purified water through osmosis for comfort and well-being. In addition, the villa has an automation system (domotics) that allows intelligent control of the home, an incredible pool, a garage for 4 cars, a magnificent elevator, laundry room, and a large terrace where you can enjoy the sun and 360° panoramic views. Solymar is one of the most privileged areas in Benalmádena. The villa's location is ideal: 10 minutes from the beach and Puerto Marina, close to schools, restaurants, and leisure spots, with unbeatable connections to Málaga via public transport, train, and just 20 km from Málaga and its airport

- | | | | | | |
|--|---|--|--|--|--|
| <p>Setting</p> <ul style="list-style-type: none"> ✓ Town ✓ Close To Port ✓ Close To Shops ✓ Close To Sea ✓ Close To Town ✓ Close To Schools | <p>Orientation</p> <ul style="list-style-type: none"> ✓ South | <p>Condition</p> <ul style="list-style-type: none"> ✓ Excellent | <p>Pool</p> <ul style="list-style-type: none"> ✓ Private | <p>Climate Control</p> <ul style="list-style-type: none"> ✓ Air Conditioning ✓ Pre Installed A/C ✓ Hot A/C ✓ Cold A/C ✓ U/F Heating ✓ U/F/H Bathrooms | <p>Views</p> <ul style="list-style-type: none"> ✓ Mountain ✓ Panoramic ✓ Garden ✓ Pool ✓ Ski ✓ Forest |
| <p>Features</p> <ul style="list-style-type: none"> ✓ Covered Terrace ✓ Lift ✓ Fitted Wardrobes ✓ Private Terrace ✓ Solarium ✓ Games Room ✓ Guest House ✓ Storage Room ✓ Utility Room ✓ Access for people with reduced mobility ✓ Marble Flooring ✓ Barbeque ✓ Double Glazing ✓ Basement | <p>Furniture</p> <ul style="list-style-type: none"> ✓ Fully Furnished | <p>Kitchen</p> <ul style="list-style-type: none"> ✓ Fully Fitted | <p>Garden</p> <ul style="list-style-type: none"> ✓ Private | <p>Security</p> <ul style="list-style-type: none"> ✓ Electric Blinds ✓ 24 Hour Security ✓ Safe | <p>Parking</p> <ul style="list-style-type: none"> ✓ Underground ✓ Garage |
| <p>Utilities</p> <ul style="list-style-type: none"> ✓ Electricity | <p>Category</p> <ul style="list-style-type: none"> ✓ Investment ✓ Luxury ✓ Contemporary | | | | |