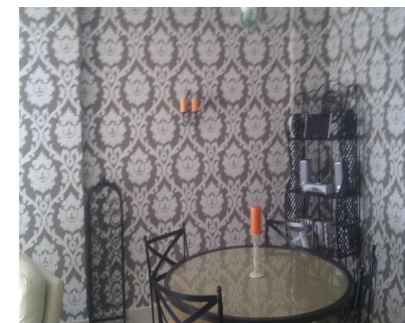
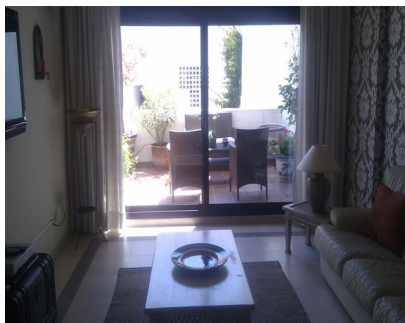


Short Term Rental - Apartment - Nueva Andalucía  
800€ / Week

www.mibgroup.es  
+34 662 58 96 58  
info@mibgroup.es



Ref.-ID: MIBGR1977129

Nueva Andalucía

Apartment



We are located between 'Golf Valley' and Puerto Banus, Nueva Andalucia, Costa del Sol Choose from the many long-established golf courses first class. Go to Puerto Banus and taste the best of the best fashion worlds have to offer. But there are deals to be had too. Stop at one of the outdoor bars and restaurants many, and watch the world go by. You may even spot a celebrity, because the area attracts many celebrities. We are 15 minutes from the beaches of Puerto Banus Marina, or take a 10-minute bus or taxi to Marbella. Ferry ride to Marbella from the port available. Supermarket, restaurants, bars, hairdresser, pharmacy, takeaway, gift shop, dry cleaners, are within walking distance of our apartment. Large market every Saturday of posts extending from the nearby Plaza Downtown Puerto Banus. Gibraltar 1 hour drive. Sierra Navada, Granada, Alhambra is 2 hours. This development was presented to Amanda Lamb 'A Place in the Sun "Other Activities: Golf Bowling: If you like golf look no further, we find" Golf Valley ". Aloha, Los Naranjos, La Quinta, Las Brisas and are well established courses within 5 minutes drive. Valderrama is only an hour by car. All these golf courses have been here for many years and are incredibly beautiful with palm trees and lush green. Clubhouses have great shopping, and the food is unsurpassed. Most courses now make offers (all at a price). If you want any information on the best deals on everything during your stay, please let us know and we will find out for you. Ski: despite non-local in a ski resort, you can drive to the south Spains main ski station Sierra Navada in two hours

- |   |  |   |  |   |  |
|---|--|---|--|---|--|
| <b>Setting</b> <ul style="list-style-type: none"><li>✓ Close To Golf</li><li>✓ Close To Port</li><li>✓ Close To Shops</li><li>✓ Close To Sea</li><li>✓ Urbanisation</li></ul> | <b>Orientation</b> <ul style="list-style-type: none"><li>✓ South East</li></ul>    | <b>Condition</b> <ul style="list-style-type: none"><li>✓ Excellent</li></ul>  | <b>Pool</b> <ul style="list-style-type: none"><li>✓ Communal</li><li>✓ Children`s Pool</li></ul> | <b>Climate Control</b> <ul style="list-style-type: none"><li>✓ Hot A/C</li><li>✓ Cold A/C</li></ul> | <b>Views</b> <ul style="list-style-type: none"><li>✓ Mountain</li></ul>      |
| <b>Features</b> <ul style="list-style-type: none"><li>✓ Covered Terrace</li><li>✓ Private Terrace</li></ul>   | <b>Furniture</b> <ul style="list-style-type: none"><li>✓ Fully Furnished</li></ul> | <b>Kitchen</b> <ul style="list-style-type: none"><li>✓ Fully Fitted</li></ul> | <b>Garden</b> <ul style="list-style-type: none"><li>✓ Communal</li></ul>                         | <b>Security</b> <ul style="list-style-type: none"><li>✓ Gated Complex</li></ul>                     | <b>Parking</b> <ul style="list-style-type: none"><li>✓ Underground</li></ul> |