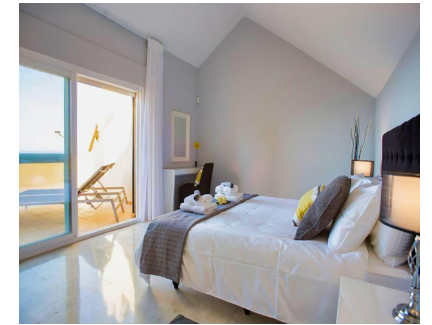




Short Term Rental - Apartment - Marbella  
2.450€ / Week

www.mibgroup.es  
+34 662 58 96 58  
info@mibgroup.es



Ref.-ID: MIBGR3777586

Marbella

Apartment



FRONT LINE BEACH HOLIDAY APARTMENT! Turistic registration number : VFT/MA/16447 This stunning duplex penthouse apartment is in located in the Rio Real Playa complex. This two-storey light and spacious penthouse is on the beachfront and enjoys sea views from the large terraces. It is situated within walking distance of the El Trocadero Beach Club, next to Rio Real Golf Club and only 10 minutes away from the centre of Marbella. Apartment sleeps 8, Rio Real, Marbella area for holiday rentals 4 bedroom duplex penthouse Rio Real Playa Marbella. The resort Rio Real Playa is located on the beach, between Rio Real Golf course and Marbella centre. Río Real Playa consists of 60 apartments and luxury penthouses distributed over 9 blocks situated on 36.500 m2 plot of land. Río Real Playa is an extraordinary beachfront housing development in Río Real area. Its special and exclusive situation as well as its design have made it one of the most wanted and demanded residential areas The main floor comprises of three spacious en-suite double bedrooms and a spacious equipped kitchen with a west facing terrace, which is perfect for dining or barbequing. An outside laundry area with washing machine and dryer is adjacent to the kitchen. The third bedroom on the main floor faces north and accesses its own private balcony. This bright duplex penthouse is surrounded by large terraces; allowing a wide range of outdoor lifestyle all year round. The ample living room and two south facing bedrooms offer direct access to the main terrace with its impressive views over the beach, the Mediterranean Sea and Marbella's coast up to Gibraltar and Africa. The upper floor comprises of the private master bedroom and its en-suite bathroom with bath and shower, and a cozy terrace to enjoy one-to-one breakfasts and stunning views to the sea. All windows and terrace doors are double glazed and equipped with shutters. There is marble flooring throughout and all rooms are equipped with a hot and cold air-conditioning system, controlled individually for each floor. The bathrooms also feature underfloor heating. The lift leads from any floor directly to the penthouse's main door.

- |  |   |  |   |  |   |
|--|---|--|---|--|---|
| <p><b>Setting</b></p> <ul style="list-style-type: none"> <li>✓ Close To Golf</li> <li>✓ Close To Port</li> <li>✓ Close To Shops</li> <li>✓ Close To Sea</li> <li>✓ Close To Schools</li> <li>✓ Urbanisation</li> </ul>   | <p><b>Orientation</b></p> <ul style="list-style-type: none"> <li>✓ South</li> </ul>         | <p><b>Condition</b></p> <ul style="list-style-type: none"> <li>✓ Excellent</li> </ul>  | <p><b>Pool</b></p> <ul style="list-style-type: none"> <li>✓ Communal</li> <li>✓ Heated</li> </ul> | <p><b>Climate Control</b></p> <ul style="list-style-type: none"> <li>✓ Hot A/C</li> <li>✓ Cold A/C</li> <li>✓ Fireplace</li> </ul> | <p><b>Views</b></p> <ul style="list-style-type: none"> <li>✓ Sea</li> <li>✓ Beach</li> <li>✓ Panoramic</li> <li>✓ Garden</li> <li>✓ Pool</li> </ul> |
| <p><b>Features</b></p> <ul style="list-style-type: none"> <li>✓ Covered Terrace</li> <li>✓ Lift</li> <li>✓ Fitted Wardrobes</li> <li>✓ Private Terrace</li> <li>✓ Storage Room</li> <li>✓ Utility Room</li> <li>✓ Ensuite Bathroom</li> <li>✓ Marble Flooring</li> </ul> | <p><b>Furniture</b></p> <ul style="list-style-type: none"> <li>✓ Fully Furnished</li> </ul> | <p><b>Kitchen</b></p> <ul style="list-style-type: none"> <li>✓ Fully Fitted</li> </ul> | <p><b>Garden</b></p> <ul style="list-style-type: none"> <li>✓ Communal</li> </ul>                 | <p><b>Security</b></p> <ul style="list-style-type: none"> <li>✓ Gated Complex</li> </ul>   | <p><b>Parking</b></p> <ul style="list-style-type: none"> <li>✓ Underground</li> <li>✓ Garage</li> </ul>   |
| <p><b>Category</b></p> <ul style="list-style-type: none"> <li>✓ Beachfront</li> <li>✓ Golf</li> <li>✓ Holiday Homes</li> <li>✓ Luxury</li> </ul>   |   |  |   |  |   |