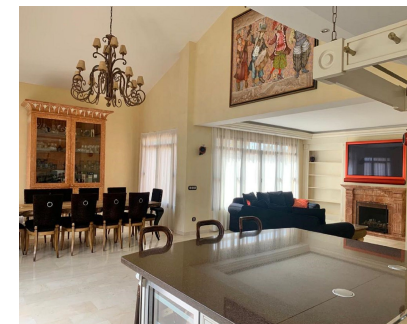


Short Term Rental - Apartment - Puerto Banús  
6.200€ / Week

[www.mibgroup.es](http://www.mibgroup.es)  
+34 662 58 96 58  
[info@mibgroup.es](mailto:info@mibgroup.es)



Ref.-ID: MIBGR4254196

Puerto Banús

Apartment



This is a stunning duplex penthouse is situated in luxurious Bahia de Banus urbanization. It hosts: three spacious bedrooms, each with its own designer en-suite bathroom; three furniture terraces, an amazing living space with an open-plan kitchen, terrace-pool, a study, laundry room and an additional guest bathroom. In addition, guest will have access to two parking spaces in the urbanization's closed garage. First Floor: On the first floor you will find two bedrooms. Each with its own en-suite bathroom and mini-fridge and abundant storage space. The first bedroom offers a unique design. In addition to a double bed, it is equipped with a build-in bar inspired by British gastropubs, two reliable leather sofas and a fireplace, making it perfect for cozy evenings. This room also has its own private south-facing terrace with two sunbeds, two sofas and a firepit. In addition, this room has its-own en-suite bathroom, inspired by the giant chessboard from Alice's adventure Through the Looking-Glass and containing a luxury bath in addition to the usual facilities. The similarly spacious second bedroom, will remind you of the halls and gardens of Buckingham Palace. In addition to a double-bed you will find a desk for working or creating a make-up station. This room's private bathroom is made unique by its double-shower with its own sitting area, making it perfect for either adventures couples or for differently abled guest. The main living area can be broken down into three spaces: living room, kitchen and dining-area. The living room has two large sofas, a journal table, a huge TV, and Xbox 360 with a Netflix account setup for you to use. Second Floor As you ascend the stairs, you enter the open-plan study with a sea-facing window and an inspiring view. From the study you open the door to the master-bedroom area where you will find a room-sized walk-in closet, master bedroom and gigantic bathroom. The master-bedroom has a double bed, a treadmill, and its own private terrace. Finally, the bathroom is equipped with a free-standing stylish bath, two sinks and a shower with a sitting area, in addition to the usual facilities. There is also a make-up table located in the bathroom. The Urbanization The urbanization itself is colorful and magical place. With a distinctive Asian influence in both its architecture and exotic gardens - Bahia de Banus offers numerous on-site facilities which include 2 outdoor swimming pools, an ornamental pond with a Thai-style seating area, a jacuzzi and a modest but fully-equipped gymnasium. The pools are particularly lovely, with lots of sunbeds and not many visitors. It is a lovely place to rest and get a summer tan on. The urbanization is a quiet, private community, equipped with 24/7 security and concierge services.

- |   |  |   |   |  |  |
|---|--|---|---|--|--|
| <b>Setting</b><br><ul style="list-style-type: none"> <li>✓ Commercial Area</li> <li>✓ Beachside</li> <li>✓ Port</li> <li>✓ Close To Port</li> <li>✓ Close To Shops</li> </ul> | <b>Orientation</b><br><ul style="list-style-type: none"> <li>✓ South</li> </ul>    | <b>Condition</b><br><ul style="list-style-type: none"> <li>✓ Excellent</li> </ul> | <b>Pool</b><br><ul style="list-style-type: none"> <li>✓ Communal</li> </ul>   | <b>Climate Control</b><br><ul style="list-style-type: none"> <li>✓ Air Conditioning</li> </ul> | <b>Features</b><br><ul style="list-style-type: none"> <li>✓ Covered Terrace</li> <li>✓ Fitted Wardrobes</li> <li>✓ Near Transport</li> <li>✓ Private Terrace</li> <li>✓ Solarium</li> <li>✓ WiFi</li> <li>✓ Gym</li> <li>✓ Sauna</li> <li>✓ Marble Flooring</li> <li>✓ Double Glazing</li> <li>✓ Domotics</li> </ul> |
| <b>Furniture</b><br><ul style="list-style-type: none"> <li>✓ Fully Furnished</li> </ul>   | <b>Kitchen</b><br><ul style="list-style-type: none"> <li>✓ Fully Fitted</li> </ul> | <b>Garden</b><br><ul style="list-style-type: none"> <li>✓ Communal</li> </ul>     | <b>Security</b><br><ul style="list-style-type: none"> <li>✓ Gated Complex</li> <li>✓ Entry Phone</li> <li>✓ 24 Hour Security</li> </ul> | <b>Parking</b><br><ul style="list-style-type: none"> <li>✓ Underground</li> </ul>              | <b>Utilities</b><br><ul style="list-style-type: none"> <li>✓ Electricity</li> <li>✓ Drinkable Water</li> </ul>   |
| <b>Category</b><br><ul style="list-style-type: none"> <li>✓ Beachfront</li> <li>✓ Holiday Homes</li> <li>✓ Luxury</li> <li>✓ Contemporary</li> </ul>                          |  |   |   |  |  |