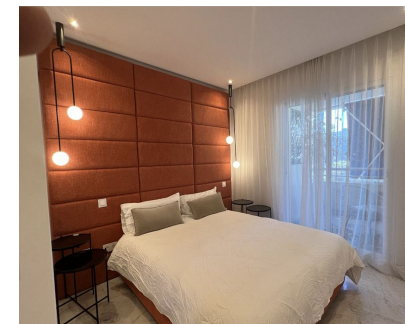
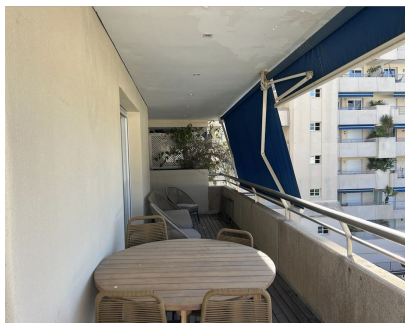


Short Term Rental - Apartment - Puerto Banús  
2.100€ / Week

www.mibgroup.es  
+34 662 58 96 58  
info@mibgroup.es



Ref.-ID: MIBGR4295332

Puerto Banús

Apartment



This wonderful apartment is located in the heart of Puerto Banus. The location is ideal, since it is in a quiet area, but at the same time it is a few minutes walk from the most popular restaurants, bars and shops in the area. In addition, the sea view from the apartment is simply stunning, making it an ideal location for those who wish to enjoy the natural beauty of the Costa del Sol. The interior of the apartment is equally impressive, with a recent renovation making it a modern and stylish space. The two bedrooms are spacious and bright, with large windows that let in natural light and offer panoramic views of the mountains and the sea. The main bedroom has a comfortable double bed, while the second bedroom has two single beds that open onto a small room with another bed, making it perfect for families or groups of friends. The house is equipped with everything you need for a comfortable and relaxing stay, from air conditioning to heating, including all electrical appliances. The kitchen is fully equipped with modern appliances, including a fridge, oven, microwave, dishwasher and washing machine, so that guests can feel at home and prepare their favorite meals at any time. The jewel in the crown of the apartment is undoubtedly the terrace, which is on the corner and is approximately 20 square meters. With views of La Concha mountain and Puerto Banus beach, it is the perfect place to relax and enjoy. Whether it is to enjoy breakfast overlooking the sea, read a book in the afternoon sun or enjoy a romantic dinner in the open air, this terrace is the perfect place to do it. In summary, this apartment is the ideal place for those who wish to enjoy a relaxing and comfortable stay in Puerto Banus, in a modern and elegant space with impressive views.

- |   |  |   |   |  |  |
|---|--|---|---|--|--|
| <p><b>Setting</b></p> <ul style="list-style-type: none"> <li>✓ Commercial Area</li> <li>✓ Beachside</li> <li>✓ Close To Port</li> <li>✓ Close To Shops</li> <li>✓ Close To Sea</li> <li>✓ Close To Town</li> <li>✓ Close To Marina</li> <li>✓ Urbanisation</li> </ul> | <p><b>Orientation</b></p> <ul style="list-style-type: none"> <li>✓ South West</li> </ul> | <p><b>Condition</b></p> <ul style="list-style-type: none"> <li>✓ Excellent</li> <li>✓ Recently Refurbished</li> </ul> | <p><b>Pool</b></p> <ul style="list-style-type: none"> <li>✓ Communal</li> </ul>   | <p><b>Views</b></p> <ul style="list-style-type: none"> <li>✓ Sea</li> <li>✓ Mountain</li> <li>✓ Beach</li> <li>✓ Panoramic</li> <li>✓ Garden</li> <li>✓ Urban</li> </ul> | <p><b>Features</b></p> <ul style="list-style-type: none"> <li>✓ Covered Terrace</li> <li>✓ Lift</li> <li>✓ Fitted Wardrobes</li> <li>✓ Private Terrace</li> <li>✓ WiFi</li> <li>✓ Marble Flooring</li> </ul> |
| <p><b>Furniture</b></p> <ul style="list-style-type: none"> <li>✓ Fully Furnished</li> </ul>   | <p><b>Kitchen</b></p> <ul style="list-style-type: none"> <li>✓ Fully Fitted</li> </ul>   | <p><b>Garden</b></p> <ul style="list-style-type: none"> <li>✓ Communal</li> </ul>                                     | <p><b>Security</b></p> <ul style="list-style-type: none"> <li>✓ Gated Complex</li> <li>✓ Entry Phone</li> <li>✓ 24 Hour Security</li> </ul> | <p><b>Parking</b></p> <ul style="list-style-type: none"> <li>✓ Garage</li> <li>✓ Communal</li> </ul>   | <p><b>Utilities</b></p> <ul style="list-style-type: none"> <li>✓ Electricity</li> <li>✓ Drinkable Water</li> <li>✓ Telephone</li> </ul>  |
| <p><b>Category</b></p> <ul style="list-style-type: none"> <li>✓ Bargain</li> <li>✓ Beachfront</li> <li>✓ Holiday Homes</li> <li>✓ Luxury</li> </ul>   |  |   |   |  |  |