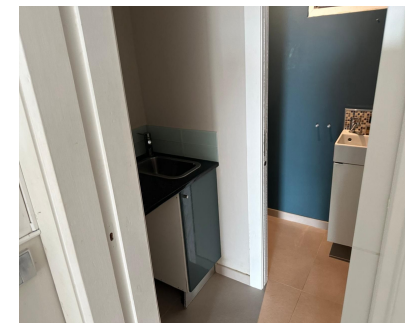


Long Term Rental - Commercial - El Rosario
800€ / Month

www.mibgroup.es
+34 662 58 96 58
info@mibgroup.es



Ref.-ID: MIBGR4824838

El Rosario

Commercial



1



35 m2

Office / Shop 35m2 Located on N340 in between Elviria and El Rosario.

Setting

- ✓ Commercial Area
- ✓ Close To Golf
- ✓ Close To Shops
- ✓ Close To Sea
- ✓ Close To Schools

Kitchen

- ✓ Partially Fitted

Orientation

- ✓ South

Condition

- ✓ Excellent

Views

- ✓ Street

Features

- ✓ Near Transport
- ✓ Restaurant On Site
- ✓ Fiber Optic

Furniture

- ✓ Not Furnished