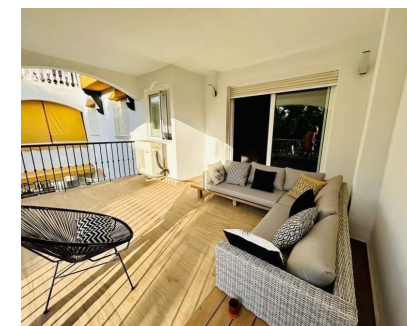


Long Term Rental - Apartment - Nueva Andalucía  
1.700€ / Month

www.mibgroup.es  
+34 662 58 96 58  
info@mibgroup.es



Ref.-ID: MIBGR4861891

Nueva Andalucía

Apartment



Nestled in the prestigious enclave of La Dama de Noche, this exquisite apartment offers a harmonious blend of luxury and convenience, perfect for those seeking a serene coastal lifestyle. With the gentle waves of the Mediterranean as your backdrop, this property promises an unparalleled living experience. The allure of Marbella's sun-drenched beaches and vibrant culture is just a stone's throw away, making it an ideal retreat for those who appreciate both tranquillity and accessibility. This beautifully appointed apartment features two spacious bedrooms and two modern bathrooms, all meticulously designed to provide comfort and style. The interior spans 100 square metres, offering ample space for relaxation and entertainment. The fully furnished living area is complemented by a fully fitted kitchen, equipped with top-of-the-line appliances, ensuring a seamless culinary experience. The dining room and living room are thoughtfully arranged to maximise space and light, creating a welcoming atmosphere for tenants and guests alike. Step outside onto the private terrace and enjoy the lush communal gardens and inviting communal pool, perfect for leisurely afternoons under the Costa Del Sol sun. The property boasts a private garage, ensuring convenience and security for your vehicle. Tenants will appreciate the gated community's amenities, including a lift for easy access and fitted wardrobes for ample storage. The apartment's good condition reflects its quality and attention to detail, making it a desirable choice for discerning renters. Strategically located near essential amenities, this apartment offers proximity to shops, schools, restaurants, and transport links, enhancing its appeal for families and professionals. Its enviable position close to the beach, golf courses, and children's playgrounds ensures a lifestyle of leisure and enjoyment.

**Setting**

- ✓ Close To Golf
- ✓ Close To Port
- ✓ Close To Shops
- ✓ Close To Sea
- ✓ Close To Town
- ✓ Close To Schools

**Features**

- ✓ Covered Terrace
- ✓ Lift
- ✓ Fitted Wardrobes
- ✓ Near Transport
- ✓ Private Terrace

**Orientation**

- ✓ South

**Furniture**

- ✓ Fully Furnished

**Condition**

- ✓ Good

**Kitchen**

- ✓ Fully Fitted
- ✓ Partially Fitted

**Pool**

- ✓ Communal

**Garden**

- ✓ Communal

**Climate Control**

- ✓ Air Conditioning

**Parking**

- ✓ Private

**Views**

- ✓ Garden

**Category**

- ✓ Beachfront