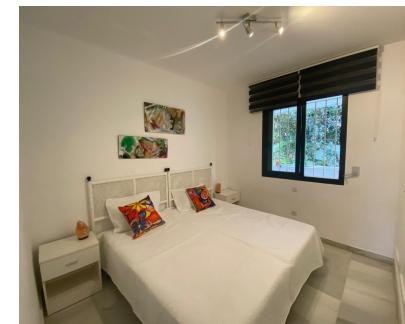


Long Term Rental - Apartment - Puerto Banús
1.875€ / Month

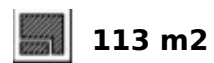
www.mibgroup.es
+34 662 58 96 58
info@mibgroup.es



Ref.-ID: MIBGR4893850

Puerto Banús

Apartment



Located in the vibrant heart of Puerto Banus, this delightful apartment offers a wonderful living experience for those seeking a blend of comfort and convenience. With its prime location, this property provides easy access to the lively Marbella lifestyle, offering a peaceful retreat amid the bustling energy of the Costa del Sol. The apartment is a cozy and stylish haven, perfect for those who want to enjoy the charm of this famous area. The apartment is thoughtfully designed, featuring two spacious bedrooms and two well-appointed bathrooms, ideal for modern living. With 113m² of space, there's plenty of room to relax and entertain. The communal pool and garden provide a peaceful escape, while the private garage ensures convenience and security. The apartment comes fully furnished, and the kitchen is well-equipped, making it move-in ready for new tenants. The apartment is designed for comfort and ease, with air conditioning and central heating to ensure a pleasant environment year-round. It also has secure entry and is part of a gated community, offering peace of mind. The living spaces are enhanced by a private terrace and covered terrace, with lovely views of the communal garden and pool. Fitted wardrobes provide plenty of storage, while the dining and living rooms are perfect for enjoying quiet evenings or hosting guests. Ideally situated close to a range of amenities, this apartment is perfect for those who appreciate convenience. It's within walking distance of shops, restaurants, transport links, and schools, making it a great choice for both families and professionals. The beach, golf courses, and a children's playground are also nearby, offering a variety of leisure activities. With its great condition and fantastic location, this apartment offers an excellent opportunity to experience life in Puerto Banus.

Setting

- ✓ Close To Port
- ✓ Close To Shops
- ✓ Close To Sea
- ✓ Close To Town
- ✓ Close To Schools

Features

- ✓ Covered Terrace
- ✓ Fitted Wardrobes
- ✓ Near Transport
- ✓ Private Terrace

Orientation

- ✓ South

Furniture

- ✓ Fully Furnished

Condition

- ✓ Good

Kitchen

- ✓ Fully Fitted
- ✓ Partially Fitted

Pool

- ✓ Communal

Garden

- ✓ Communal

Climate Control

- ✓ Air Conditioning
- ✓ Central Heating

Parking

- ✓ Private

Views

- ✓ Garden
- ✓ Pool