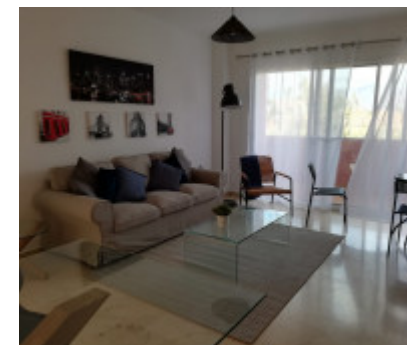


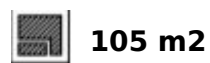
2 bedroom penthouse for rent in Manilva 700€



Ref.-ID: 253

Manilva

Penthouses



For rent penthouse next to the beach and very close to Puerto de La Duquesa. Oriented towards the East. It has a total constructed area of 120 m2. It is distributed in an entrance hall, furnished and equipped kitchen, living room with access to a terrace with sea views, 2 bedrooms with 2 bathrooms. Sea views. Gardens with communal pool. Enclosure closed. Community parking.

- ✓ Fitted Kitchen
- ✓ Fitted Wardrobes
- ✓ Furnished

- ✓ Communal Parking
- ✓ Communal Garden
- ✓ Communal Pool

- ✓ Close To Beach
- ✓ Panoramic Views