

## Two Bedroom Apartment in Casares Golf II

# 198.850€



[www.mibgroup.es](http://www.mibgroup.es)  
**+34 662 58 96 58**  
[info@mibgroup.es](mailto:info@mibgroup.es)

### Casares

### Apartments



2



2



149 m2

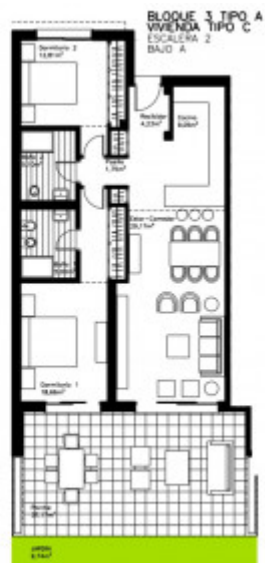
The residential complex consists of 58 homes and their corresponding parking spaces and storage rooms. All homes have common garden areas with swimming pool and large terraces. The access to the residential complex is made through a common entrance equipped with video intercom, with a mechanized door for entry and exit of vehicles and a security point. The development is located in a privileged location, surrounded by the golf course, less than three kilometers from the beach and in the vicinity of the prestigious Casares Resort. The access is made from the AP-7 motorway or the A-7 motorway, through which it communicates easily with the other municipalities of the Costa del Sol - Estepona, San Pedro de Alcántara, Marbella, Mijas, Torremolinos ... - and with the city of Malaga, where the railway station and the Costa del Sol airport are located, which allow direct connection with the rest of Europe. In the near surroundings, the owners of the Casares Golf residential complex will enjoy all that characterizes the Costa del Sol, as well as the world-famous tourist attraction, based on its beaches and golf courses, which typifies this area of Andalusia and Southern Spain.

- ✓ A/C
- ✓ Gym
- ✓ Storage
- ✓ Solar Panels

- ✓ Garage
- ✓ Parking Space
- ✓ Communal Garden
- ✓ Communal Pool

- ✓ Frontline Golf
- ✓ Gated Complex
- ✓ Terrace





**GOLF**  
 COSTA DEL SOL



**Cuadro de superficies**

Superficie Útil interior	85 m <sup>2</sup>
Superficie Útil exterior	46 m <sup>2</sup>
Superficie Construida interior con zonas comunes	129 m <sup>2</sup>
Superficie Construida B.O.J.A. (Incluye construido interior, terrazas y zona común proporcional)	139 m <sup>2</sup>

Se permite utilizar el área común en el caso de 200 m<sup>2</sup> de superficie construida con una proporción de 1:1000.

**Plano de situación**

