

## Sales - Commercial - La Mairena

# 900.000€

La Mairena

Commercial



660 m<sup>2</sup>

Commercial Premises, La Mairena, Costa del Sol. Built 660 m<sup>2</sup>. Setting : Close To Golf, Close To Town, Close To Schools, Urbanisation. Orientation : West. Condition : Good. Category : Resale.

### Setting

- ✓ Close To Golf
- ✓ Close To Town
- ✓ Close To Schools
- ✓ Urbanisation

### Orientation

- ✓ West

### Condition

- ✓ Good

### Category

- ✓ Resale



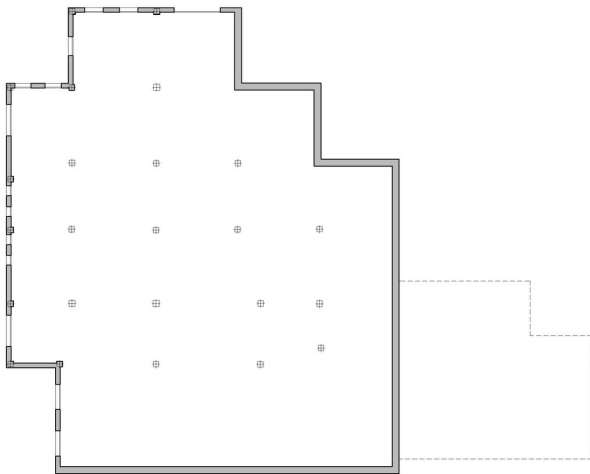












Planta cota -348