

Sales - Plot - Coín

95.000€

Coín

Plot

IBI: 98 EUR / year



676 m2

Residential plot with an informational preliminary project indicating that construction is possible on the plot, located in a popular urbanization in Coín. This south-facing plot has magnificent views of the countryside and the Mijas mountains. The plot is slightly sloped, with green areas at the front and side. The preliminary project is for a modern two-story villa of 218m² plus a basement of 129m², featuring 4 bedrooms, 3 bathrooms, and a pool. Please contact us for more information.

Setting

- ✓ Close To Shops
- ✓ Close To Town
- ✓ Urbanisation

Orientation

- ✓ South

Views

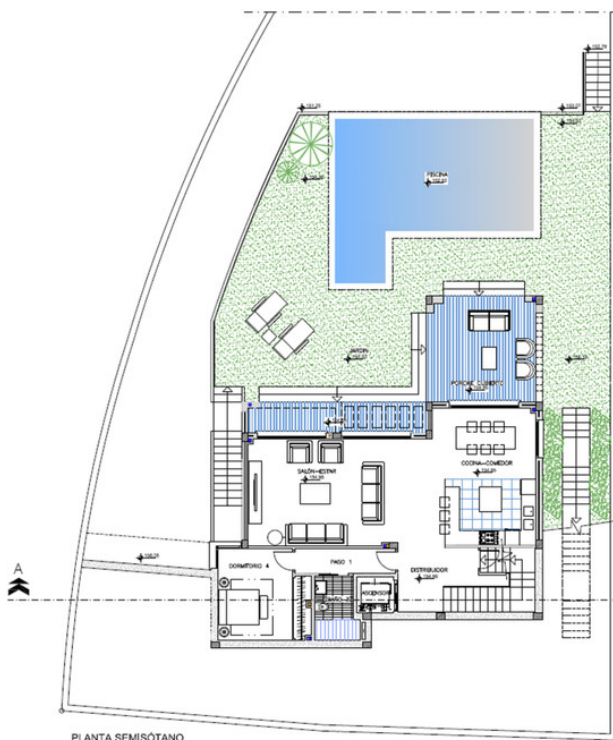
- ✓ Mountain
- ✓ Country
- ✓ Urban
- ✓ Street

Parking

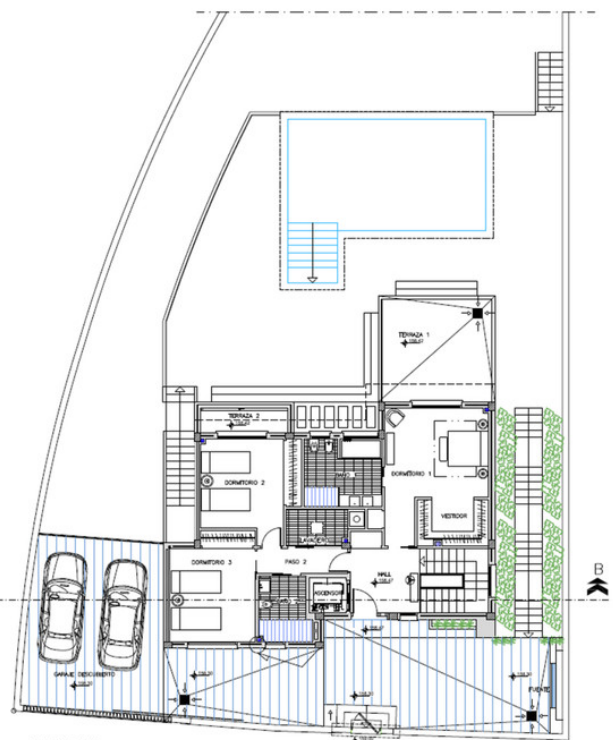
- ✓ Street

Category

- ✓ Investment
- ✓ Off Plan
- ✓ Resale
- ✓ With Planning Permission



PLANTA SEMISÓTANO
DISTRIBUCIÓN



PLANTA BAJA
DISTRIBUCIÓN

SUPERFICIES	CONSTRUIDAS	ÚTILES
PLANTA SÓTANO:		
TRASTERO, ESCALERA Y ASCENSOR.....	126.59 M ²	112.07 M ²
PLANTA SEMISÓTANO:		
VIVIENDA.....	108.52 M ²	92.39 M ²
PORCHE CUBIERTO.....	20.07 M ²	18.55 M ²
PISCINA (Lamina de agua).....	40.20 m ²	40.20 m ²
PLANTA BAJA:		
VIVIENDA.....	108.52 M ²	90.97 M ²
TERRAZA DESCUBIERTA 1.....	20.07 M ²	18.28 M ²
TERRAZA DESCUBIERTA 2.....	5.04 M ²	3.53 M ²
GARAJE DESCUBIERTO.....	41.60 M ²	36.37 M ²

FECHA: SEP. 2019	ESCALA: 1/75	5 DISTRIBUCIÓN PLANTA SEMISÓTANO Y BAJA
------------------------	-----------------	---









