

Sales - House - Benahavís

4.950.000€

Benahavís

House

Community: 3,312 EUR / year IBI: 4,941 EUR / year

Rubbish: 18 EUR / year



7



7



1022 m2



5082 m2

Have you ever wanted to live in a Moorish palace? This dream luxury villa situated in an elevated plot offering uninterrupted views over the golf course all the way to the Mediterranean Sea, Atlas Mountains and Gibraltar. This spacious villa blends Alhambra Moorish architecture (using the same craftsmen who restored the prestigious Hotel Alhambra Palace) with traditional and modern style in a truly individual way. It is built over four floors around a central atrium with fountains and electronic skylight. The main entrance to the property is located at ground level, which comprises a large fully fitted kitchen with informal dining area and connected to the formal dining area, outside covered terrace with built-in barbeque offering beautiful area to alfresco dining, cozy room to the side of the Kitchen which can be used as an informal TV room, guest cloakroom, large vaulted lounge complete with working fireplace and floor to ceiling sliding steel doors giving direct access to the open terrace, on the side of the living room is a library. The first floor distributes in 5 large double bedrooms all with en-suite bathrooms, each bedroom has its own large terrace with unrestricted views. The lower ground floor comprises; large indoor outdoor heated infinity pool, which has electrically operated solar panel on the pool effortlessly, retracts at the touch of a button, gymnasium, separate changing room for the pool and gymnasium, cinema room, games room, laundry room, and two completely separate apartments. Finally, a solarium with spectacular 360-degree views over the golf course, of the surrounding mountains and countryside and the coats of Spain and Africa a covered kitchenette, dining area, covered and uncovered leisure areas. There is a lift from the lower level to every floor including solarium. A truly unique property.

Setting

- ✓ Frontline Golf
- ✓ Country
- ✓ Close To Golf
- ✓ Close To Town
- ✓ Close To Schools
- ✓ Close To Forest
- ✓ Close To Marina

Climate Control

- ✓ Air Conditioning
- ✓ Hot A/C
- ✓ Cold A/C
- ✓ Fireplace
- ✓ U/F Heating
- ✓ U/F/H Bathrooms

Kitchen

- ✓ Fully Fitted

Utilities

- ✓ Electricity
- ✓ Drinkable Water
- ✓ Telephone

Orientation

- ✓ South
- ✓ South West

Views

- ✓ Sea
- ✓ Mountain
- ✓ Golf
- ✓ Country
- ✓ Panoramic
- ✓ Garden
- ✓ Pool
- ✓ Lake

Garden

- ✓ Private
- ✓ Landscaped

Category

- ✓ Golf
- ✓ Luxury
- ✓ Resale

Condition

- ✓ Excellent

Features

- ✓ Covered Terrace
- ✓ Lift
- ✓ Fitted Wardrobes
- ✓ Private Terrace
- ✓ Solarium
- ✓ WiFi
- ✓ Gym
- ✓ Sauna
- ✓ Games Room
- ✓ Guest Apartment
- ✓ Storage Room
- ✓ Utility Room
- ✓ Ensuite Bathroom
- ✓ Access for people with reduced mobility
- ✓ Marble Flooring
- ✓ Jacuzzi
- ✓ Barbeque
- ✓ Double Glazing
- ✓ Domotics
- ✓ Staff Accommodation
- ✓ Basement

Security

- ✓ Gated Complex
- ✓ Electric Blinds
- ✓ Entry Phone
- ✓ Alarm System
- ✓ 24 Hour Security
- ✓ Safe

Pool

- ✓ Private
- ✓ Indoor
- ✓ Heated

Furniture

- ✓ Optional

Parking

- ✓ Garage
- ✓ More Than One
- ✓ Private





























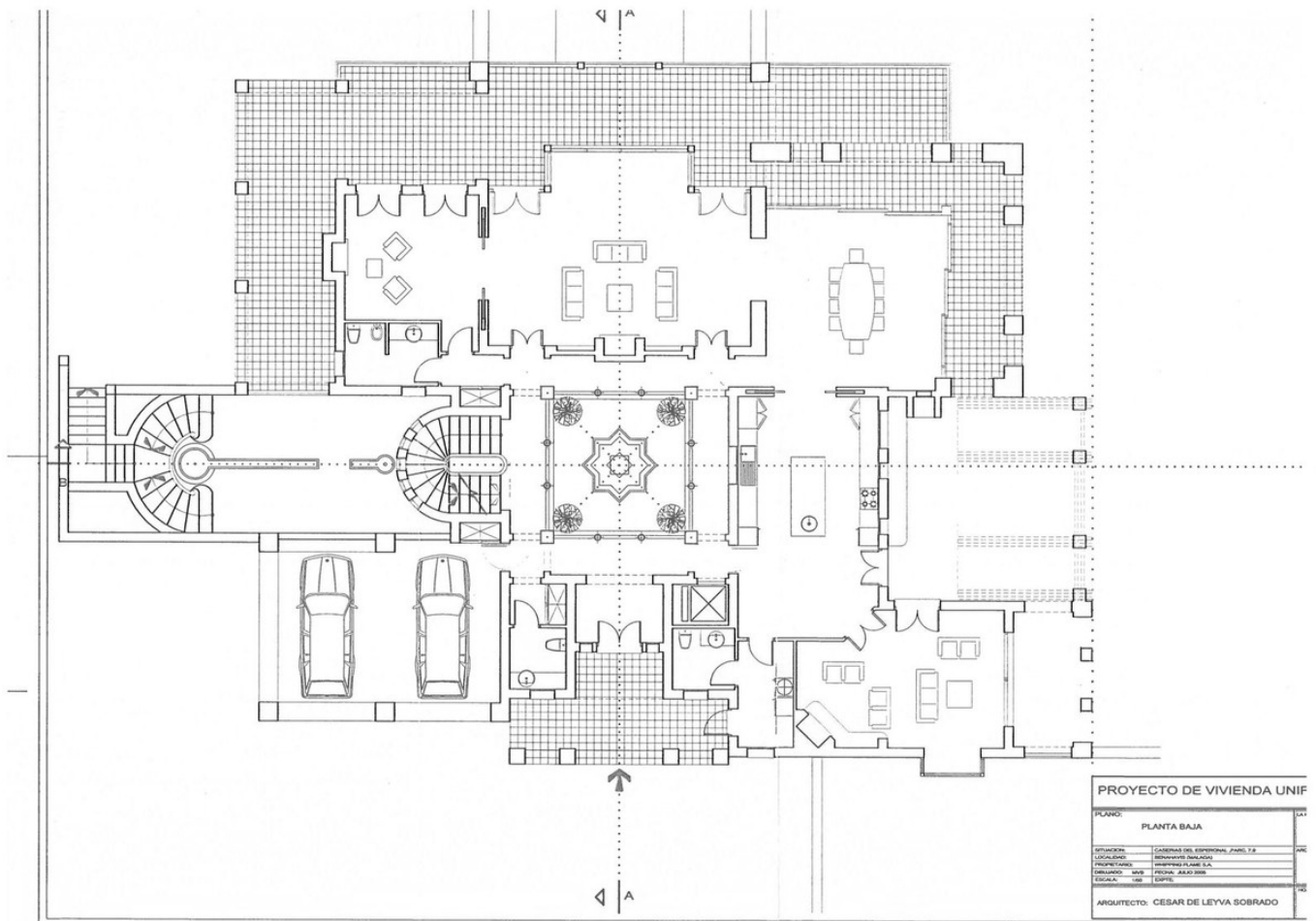


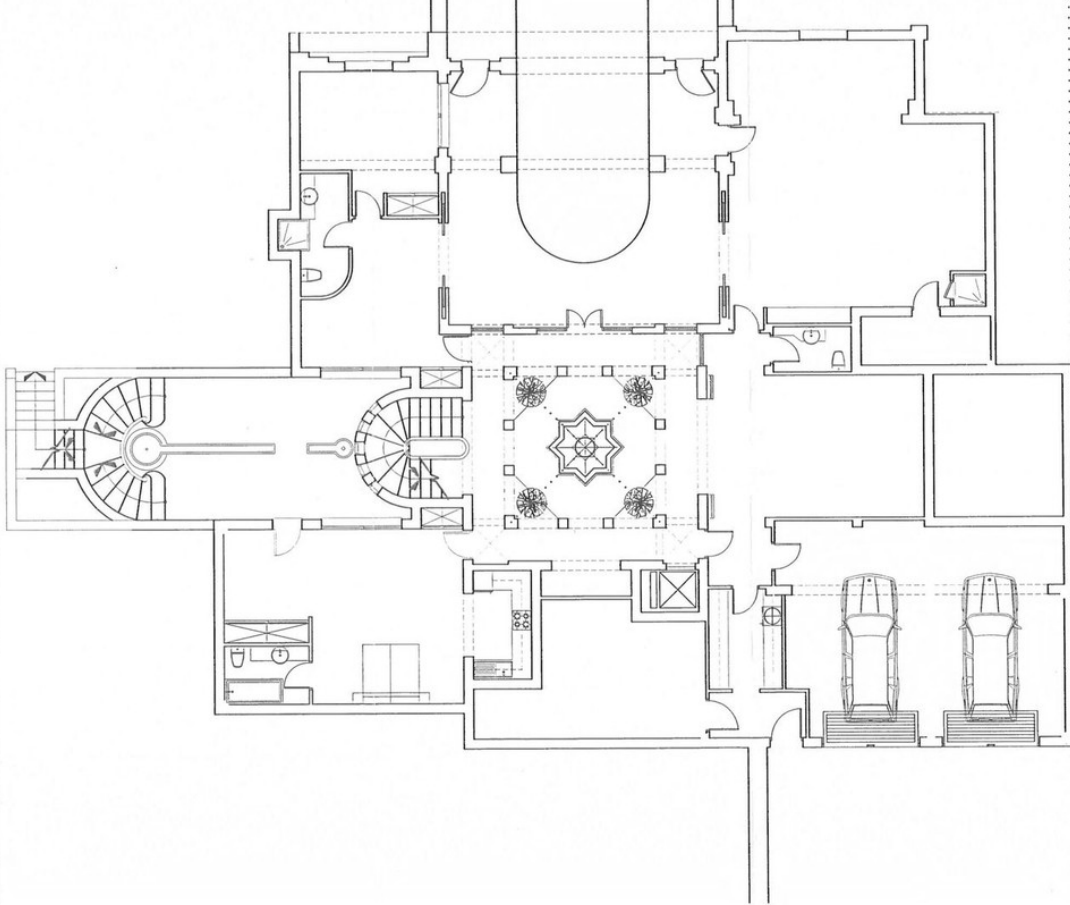










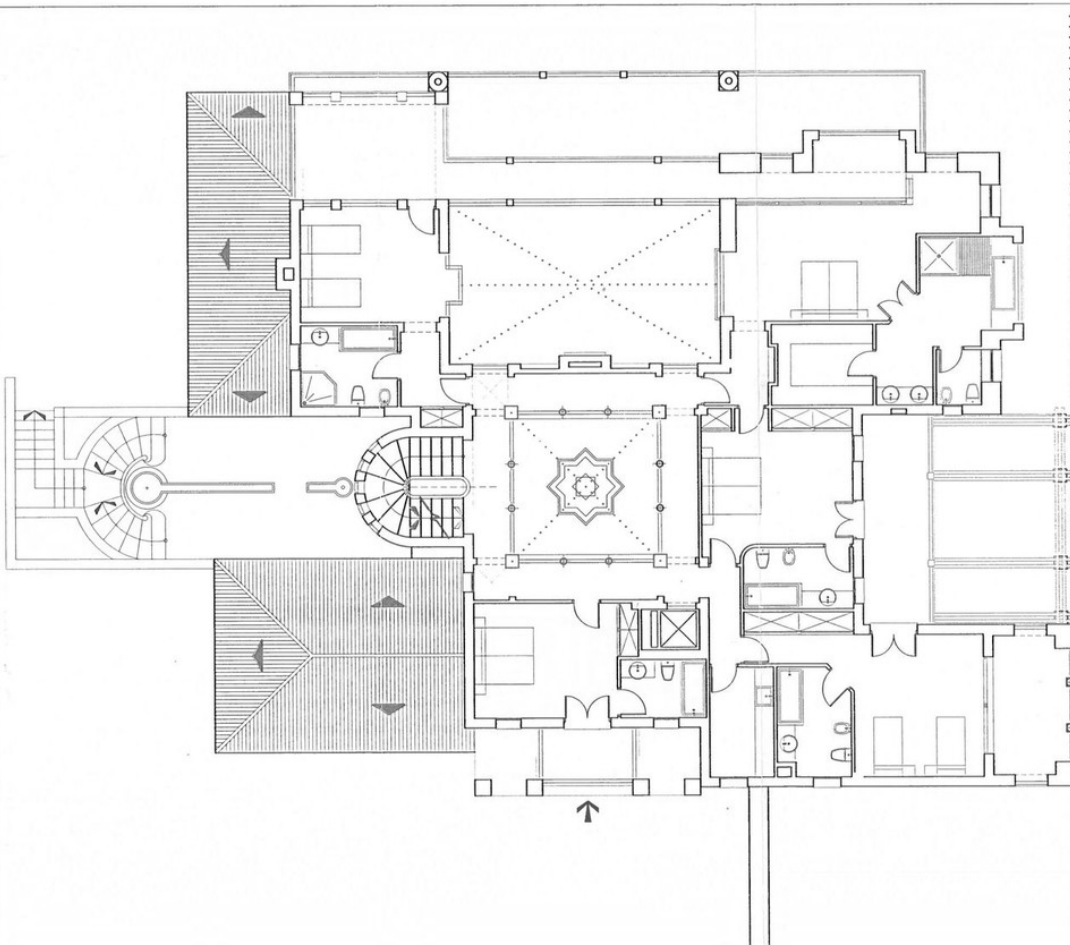


PROYECTO DE VIVIENDA UNII

PLANO:
PLANTA SOTANO

| | |
|--------------|-----------------------------------|
| SITUACION: | CALLEJON DE ESPERANZA, PARCELA 12 |
| LOCALIDAD: | SEVILLA (C/ SAN AGUSTIN) |
| PROPIETARIO: | CONDOMINIO LA CAJA S.A. |
| DESEÑADO: | MAR FERRAZ, AÑO 2003 |
| ESCALA: | 1:50 |

ARQUITECTO: CESAR DE LEYVA SOBRADO

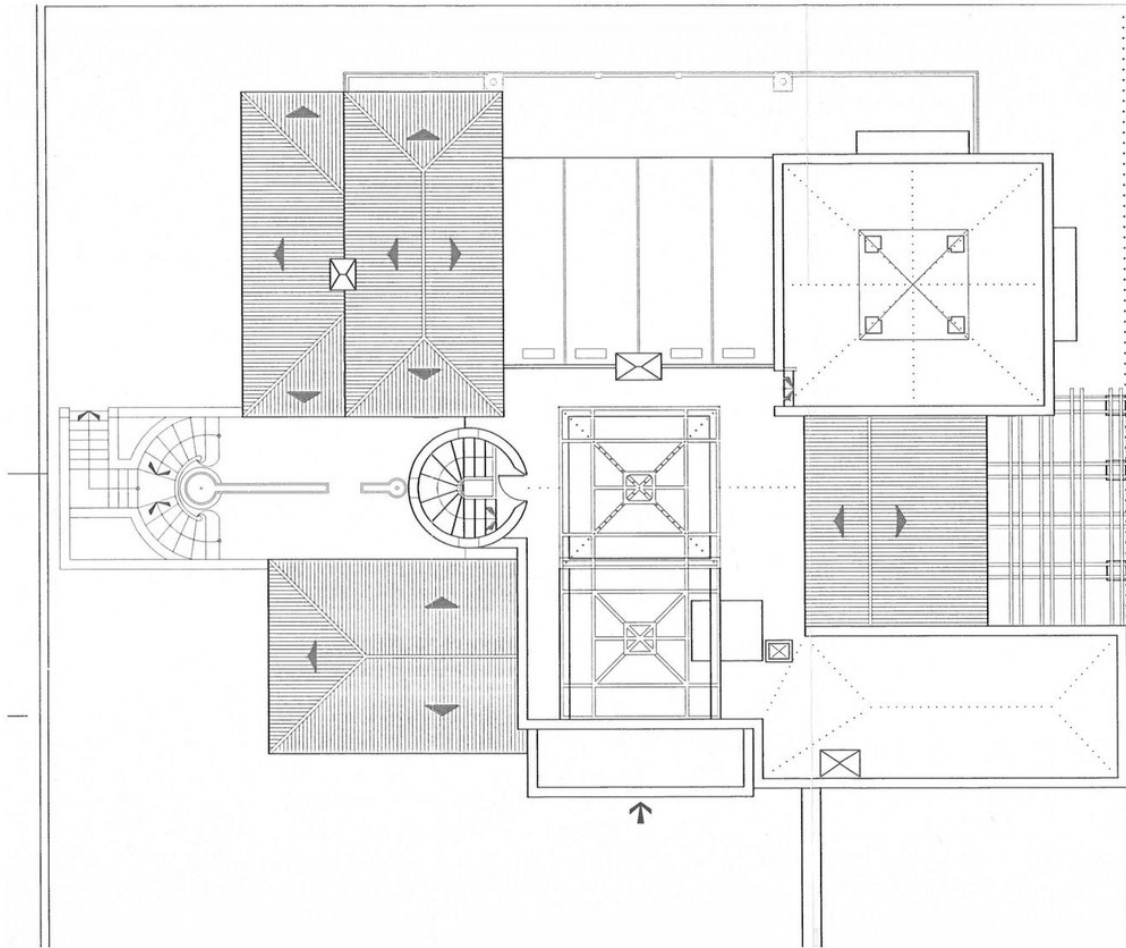


PROYECTO DE VIVIENDA UNII

PLANO:
PLANTA ALTA

| | |
|--------------|-----------------------------------|
| SITUACION: | CALLEJON DE ESPERANZA, PARCELA 12 |
| LOCALIDAD: | SEVILLA (C/ SAN AGUSTIN) |
| PROPIETARIO: | CONDOMINIO LA CAJA S.A. |
| DESEÑADO: | MAR FERRAZ, AÑO 2003 |
| ESCALA: | 1:50 |

ARQUITECTO: CESAR DE LEYVA SOBRADO



| PROYECTO DE VIVIENDA UNIF | |
|---------------------------|------------------------------|
| PLANO: | PLANTA CUBIERTA |
| SITUACION: | CALLE DEL ESPINERO, PASEO 12 |
| LOCALIDAD: | BOGOTÁ, COLOMBIA |
| PROYECTADO: | INGENIERIA CIVIL S.A. |
| ELABORADO: | ING. CESAR DE LEYVA SOBRADO |
| ESCALA: | 1:50 |
| FECHA: | 2010 |
| ARQUITECTO: | CESAR DE LEYVA SOBRADO |