

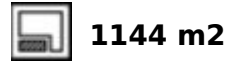
## Sales - House - Riviera del Sol

# 860.000€

Riviera del Sol

House

IBI: 1,383 EUR / year



Luxury villa with stunning sea views - Riviera del Sol, Mijas This wonderful villa located on Riviera del Sol has a lot space and light. The villa has two floors. Upstairs there are 4 bedrooms, a spacious living and dining room, a large kitchen and 4 bathrooms. On the ground floor with its own entrance has 1 bedroom, living room, kitchen and bathroom. The villa would be very suitable for two or three generations. The upper rooms are bright and furnished and the furniture is included in the price. Both kitchens are fitted to a high standard and the bathrooms are modern. You can enjoy the sea view and beautiful landscape on the large covered terrace. There are sun throughout the day on the terraces and outdoor areas. On the outdoor terrace you can barbeque in the well-equipped outdoor kitchen and relax in good sized swimming pool. The villa is fenced with a security camera system. The villa has been very well maintained over the years, the last time a couple of years ago the appliances were changed, the security system upgraded and the garden refurbished "easy to maintain" with an automatic irrigation system. The Riviera del Sol area is quiet and charming place to live and have a holiday. It is well located between Marbella and Fuengirola. The fine sandy beaches of the Mediterranean and the promenade are just 750 meters away. The nearest golf courses are only 12 km away. There are several restaurants, shops and sports facilities nearby. The distance to the airport is 36 kilometres. Ask us a drone video for separate link! Setting : Close To Golf, Close To Shops, Close To Sea, Urbanisation. Orientation : South West. Condition : Good. Pool : Private. Views : Sea, Garden, Urban. Features : Covered Terrace, Private Terrace, Guest Apartment, Storage Room. Furniture : Fully Furnished. Kitchen : Fully Fitted. Garden : Private. Security : Gated Complex, Entry Phone, Safe. Category : Holiday Homes, Investment, Luxury, Resale.

### Setting

- ✓ Close To Golf
- ✓ Close To Shops
- ✓ Close To Sea
- ✓ Urbanisation

### Views

- ✓ Sea
- ✓ Garden
- ✓ Urban

### Garden

- ✓ Private

### Orientation

- ✓ South West

### Features

- ✓ Covered Terrace
- ✓ Private Terrace
- ✓ Guest Apartment
- ✓ Storage Room

### Security

- ✓ Gated Complex
- ✓ Entry Phone
- ✓ Safe

### Condition

- ✓ Good

### Furniture

- ✓ Fully Furnished

### Category

- ✓ Holiday Homes
- ✓ Investment
- ✓ Luxury
- ✓ Resale

### Pool

- ✓ Private

### Kitchen

- ✓ Fully Fitted





























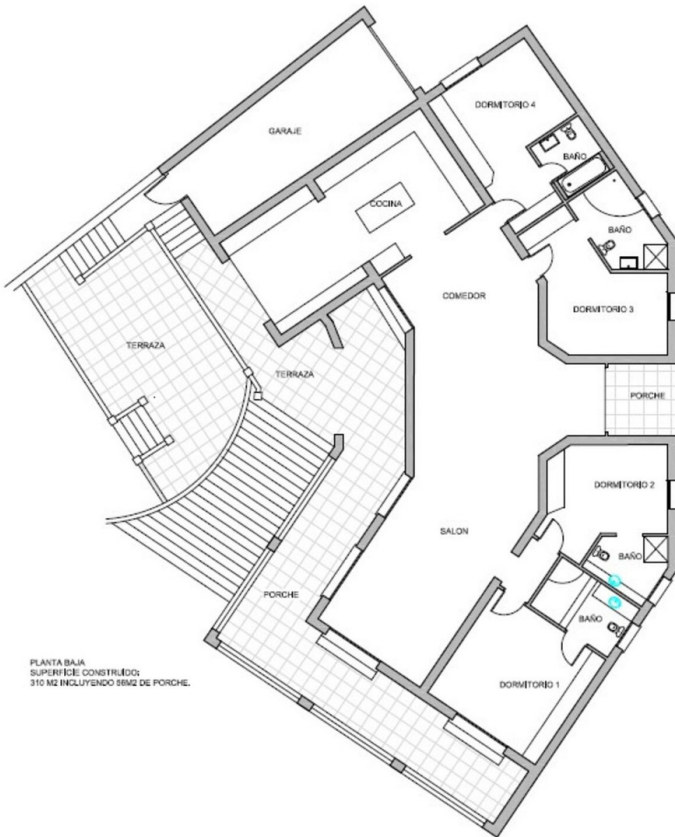




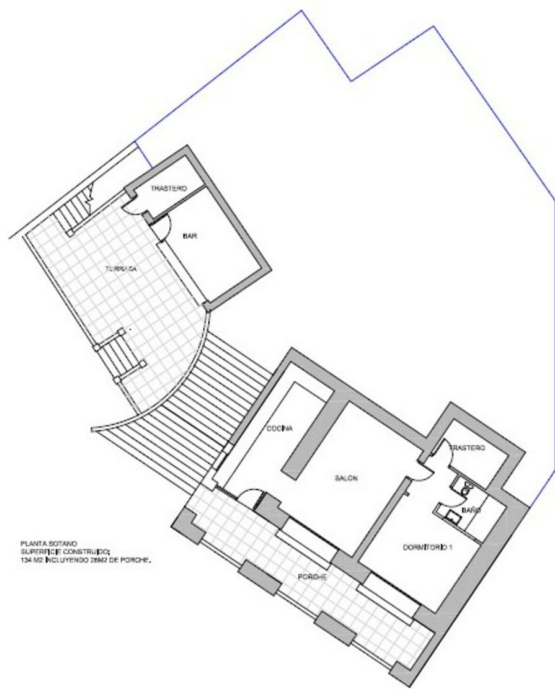








PLANTA BAJA  
SUPERFICIE CONSTRUIDA:  
310 M2 INCLUYENDO 58M2 DE PORCHE.



PLANTA SOSTANO  
SUPERFICIE CONSTRUIDA  
134,50 INCLUYENDO 28M2 DE PORCHE.