

## Sales - House - Elviria

# 1.495.000€

Elviria

House

IBI: 1,200 EUR / year

Rubbish: 230 EUR / year



2



2.5



140 m2



1000 m2

This beautiful single-storey villa has just been completely renovated, there is no obstacle walking from the street to the main bedroom of the house. It is surrounded by a beautifully manicured and easy to keep large garden with a central Balinese style swimming pool of steel structure. Finished to a high standard, the interior space flows in a practical and functional way, but at the same time the ambience has an Andalusian Mediterranean feel. The house is so warm and welcoming, different, luxurious, private, with porches, terraced areas, shaded corners all around, rooftop solarium, and much more. Amongst top qualities and luxury finishes we highlight triple glazed windows, ultimate high efficiency solar panels, home automation and remote access to the property, security system with camaras. swimming pool of steel body, total thermal and acoustic insulation, and the property comes tastefully and newly furnished inside and outdoors. It is located just 100 metres from the centre of Elviria, less than a kilometre walk to the beach!

### Setting

- ✓ Commercial Area
- ✓ Close To Golf
- ✓ Close To Shops
- ✓ Close To Schools
- ✓ Close To Forest

### Climate Control

- ✓ Air Conditioning
- ✓ Hot A/C
- ✓ Cold A/C

### Kitchen

- ✓ Fully Fitted

### Utilities

- ✓ Electricity
- ✓ Solar water heating

### Orientation

- ✓ South West
- ✓ West

### Views

- ✓ Garden
- ✓ Urban

### Garden

- ✓ Private
- ✓ Landscaped
- ✓ Easy Maintenance

### Category

- ✓ Luxury
- ✓ Resale

### Condition

- ✓ Excellent
- ✓ Recently Renovated
- ✓ Recently Refurbished

### Features

- ✓ Fitted Wardrobes
- ✓ Near Transport
- ✓ Private Terrace
- ✓ Solarium
- ✓ Storage Room
- ✓ Utility Room
- ✓ Ensuite Bathroom
- ✓ Wood Flooring
- ✓ Access for people with reduced mobility
- ✓ Barbeque
- ✓ Fiber Optic

### Security

- ✓ Electric Blinds
- ✓ Entry Phone
- ✓ Alarm System
- ✓ Safe

### Pool

- ✓ Private

### Furniture

- ✓ Fully Furnished

### Parking

- ✓ Private













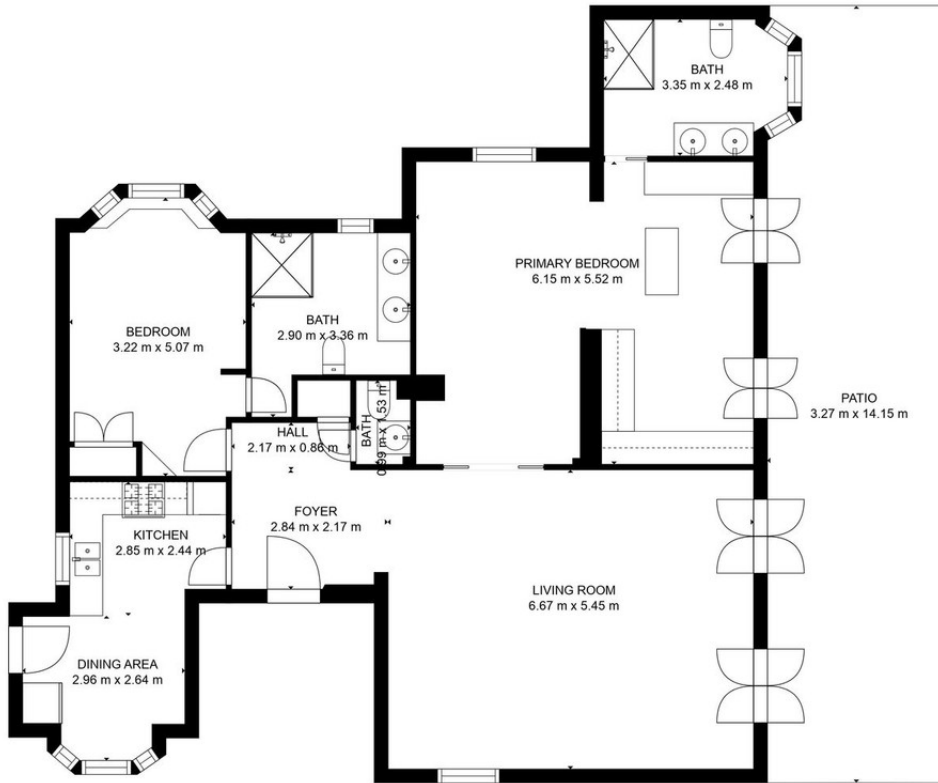












GROSS INTERNAL AREA  
 FLOOR 1: 128 m<sup>2</sup>, EXCLUDED AREAS:  
 PATIO: 45 m<sup>2</sup>  
 TOTAL: 128 m<sup>2</sup>

MEASUREMENTS ARE CALCULATED BY CUBICASA TECHNOLOGY. DEEMED HIGHLY RELIABLE BUT NOT GUARANTEED.

