

## Sales - House - Benalmadena Costa

# 329.990€

Benalmadena Costa

House



2



2



129 m2

IMPORTANT: THIS URBANISATION DOES NOT ALLOW HOLIDAY RENTALS. Renovated townhouse with sea views in Torremuelle. Are you looking for a property near the beach for your holidays or as an investment? I present to you this fantastic townhouse located in Benalmádena, Torremuelle area. With just 750 meters walking distance to the Mediterranean water. You can enjoy the sun and waves every day. This property has two double bedrooms, both bathrooms are in excellent condition and a fully equipped kitchen that opens onto the living room creating a spacious and bright atmosphere. In addition, its private terrace allows you to relax while contemplating spectacular panoramic sea views and a communal pool. The house is completely renovated which ensures your tranquility without needing additional repairs. From here you have close access to all kinds of services: restaurants, bars, commercial shops, sports centers, gym, public transport buses/trains. And if you want to explore other famous tourist areas such as Marbella - Malaga - Fuengirola; they are very accessible from this location. For all these reasons it's hard finding another more cozy option so come today before missing out on this unique opportunity...

### Setting

- ✓ Village
- ✓ Close To Shops
- ✓ Close To Sea
- ✓ Close To Schools
- ✓ Urbanisation

### Views

- ✓ Sea
- ✓ Mountain
- ✓ Street

### Garden

- ✓ Communal

### Category

- ✓ Holiday Homes
- ✓ Investment

### Orientation

- ✓ South
- ✓ South West
- ✓ West

### Features

- ✓ Covered Terrace
- ✓ Fitted Wardrobes
- ✓ Near Transport
- ✓ Private Terrace
- ✓ WiFi
- ✓ Storage Room
- ✓ Wood Flooring
- ✓ Barbeque
- ✓ Double Glazing

### Security

- ✓ Gated Complex
- ✓ Entry Phone
- ✓ Alarm System

### Condition

- ✓ Recently Refurbished

### Furniture

- ✓ Optional

### Parking

- ✓ Underground
- ✓ Street

### Pool

- ✓ Communal

### Kitchen

- ✓ Fully Fitted

### Utilities

- ✓ Electricity
- ✓ Drinkable Water
- ✓ Telephone

















































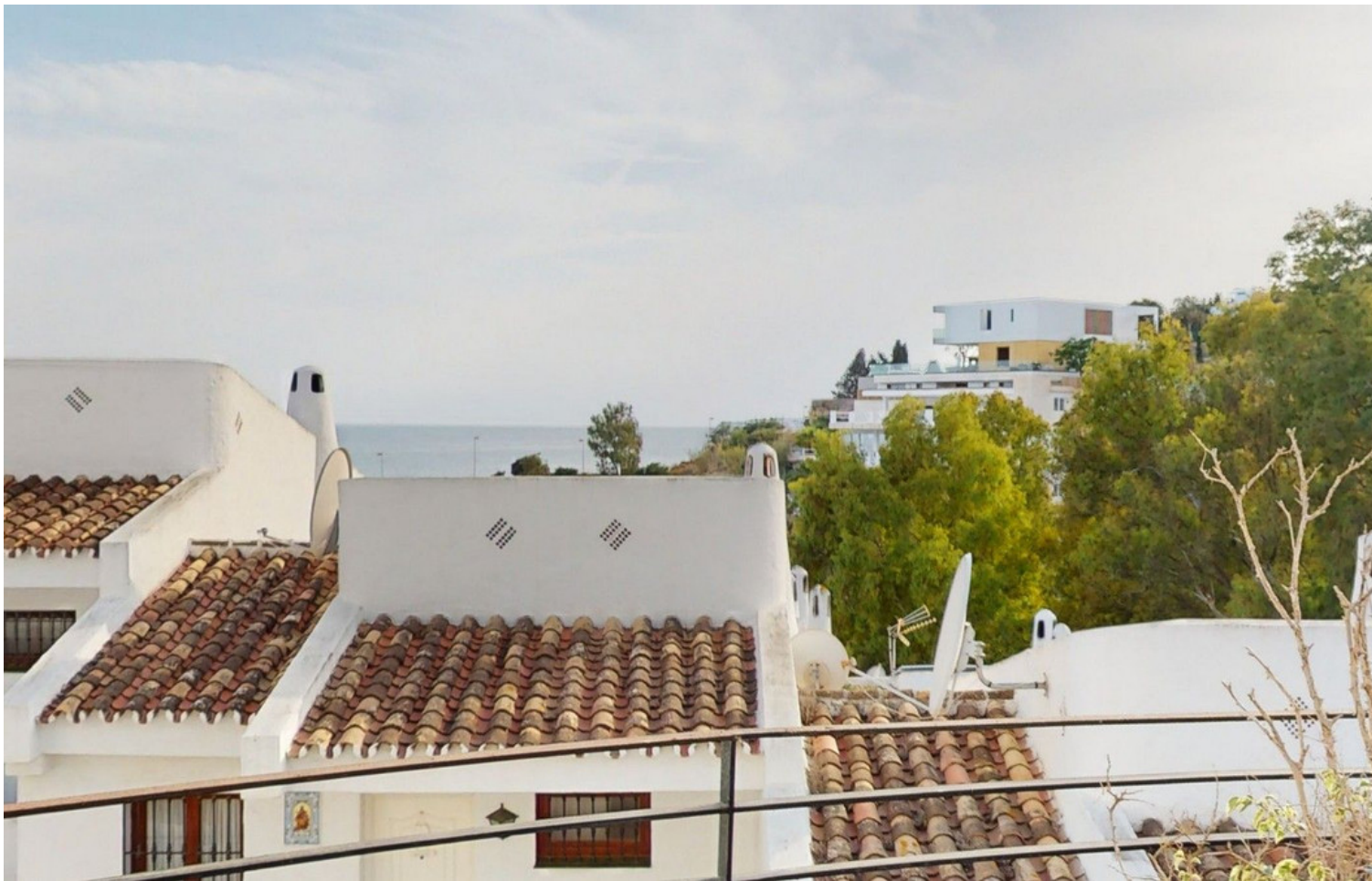




















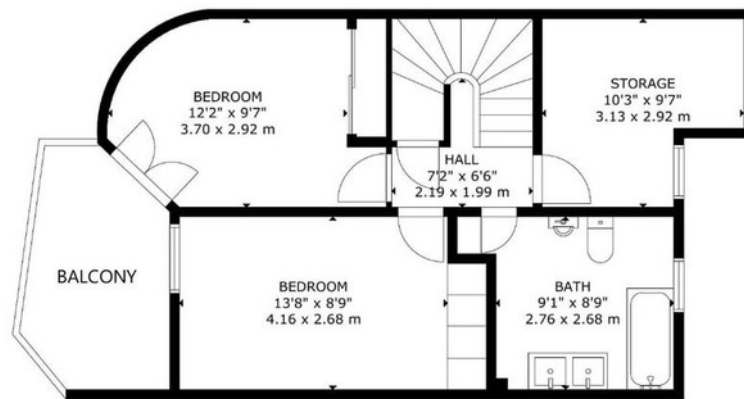
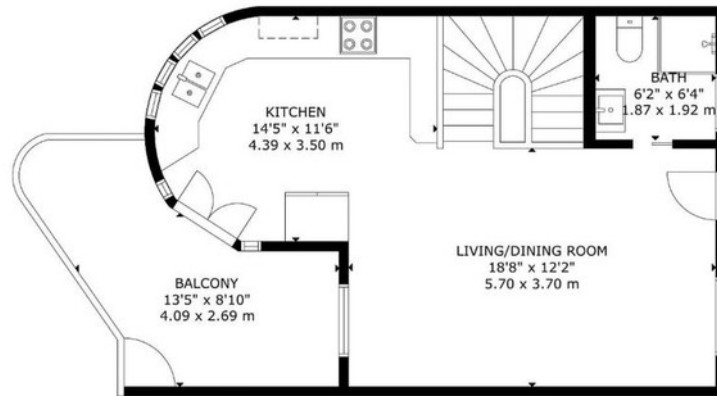






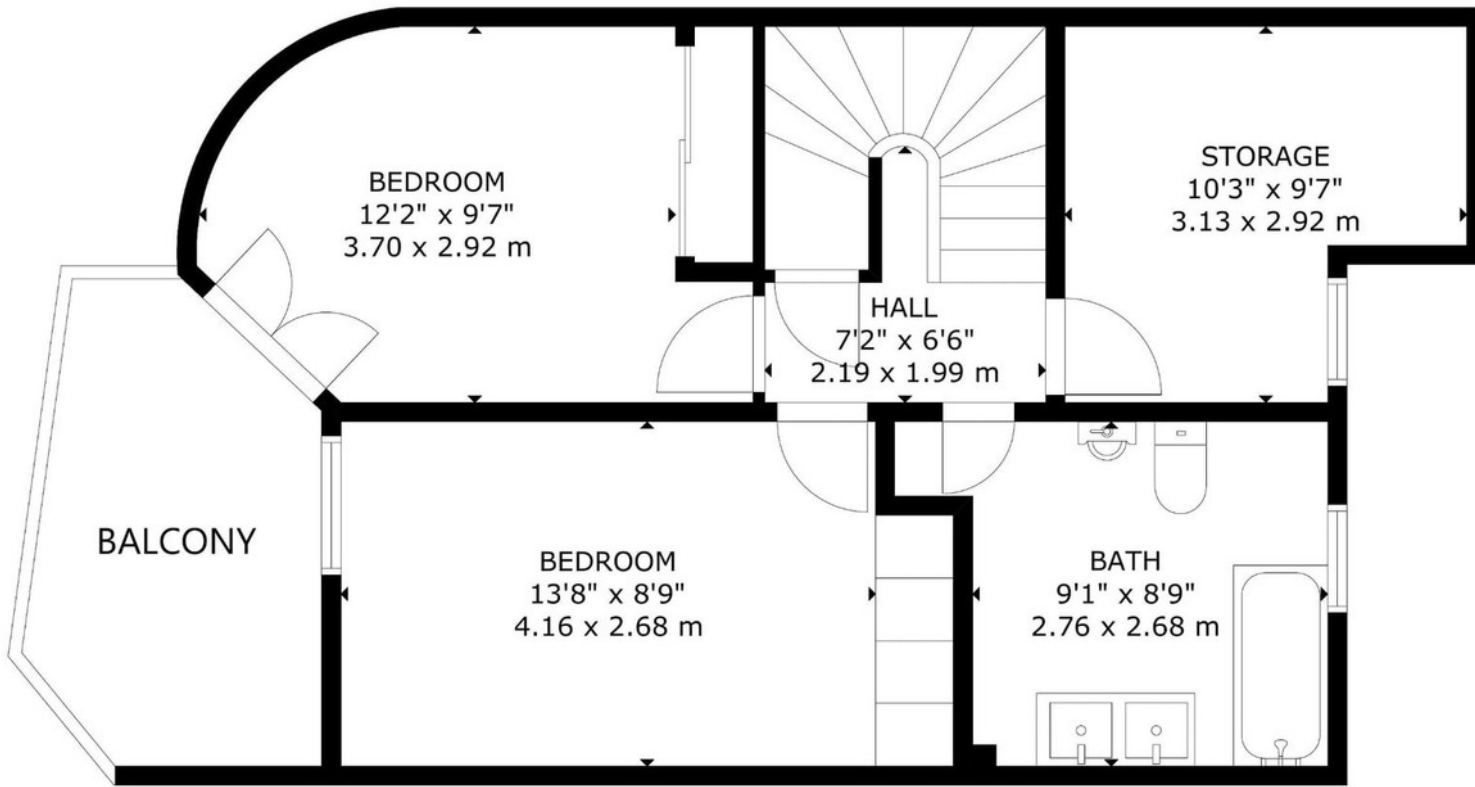






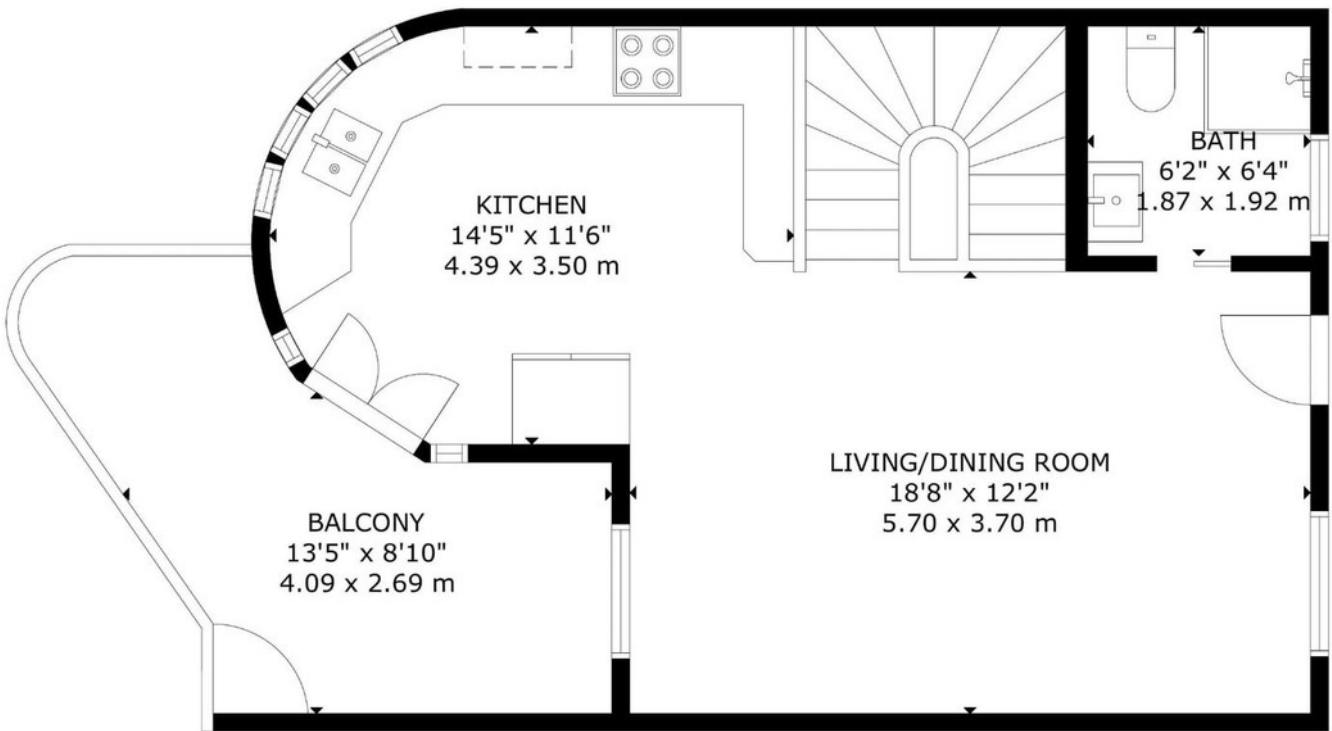
GROSS INTERNAL AREA  
 TOTAL: 90 m<sup>2</sup>/969 sq ft  
 LOWER FLOOR: 48 m<sup>2</sup>/517 sq ft, MAIN FLOOR: 42 m<sup>2</sup>/452 sq ft  
 EXCLUDED AREA: BALCONY: 11 m<sup>2</sup>/123 sq ft  
 SIZE AND DIMENSIONS ARE APPROXIMATE, ACTUAL MAY VARY.





LOWER FLOOR

GROSS INTERNAL AREA  
 TOTAL: 90 m<sup>2</sup>/969 sq ft  
 LOWER FLOOR: 48 m<sup>2</sup>/517 sq ft, MAIN FLOOR: 42 m<sup>2</sup>/452 sq ft  
 EXCLUDED AREA: BALCONY: 11 m<sup>2</sup>/123 sq ft  
 SIZE AND DIMENSIONS ARE APPROXIMATE, ACTUAL MAY VARY.



MAIN FLOOR

GROSS INTERNAL AREA  
 TOTAL: 90 m<sup>2</sup>/969 sq ft  
 LOWER FLOOR: 48 m<sup>2</sup>/517 sq ft, MAIN FLOOR: 42 m<sup>2</sup>/452 sq ft  
 EXCLUDED AREA: BALCONY: 11 m<sup>2</sup>/123 sq ft  
 SIZE AND DIMENSIONS ARE APPROXIMATE, ACTUAL MAY VARY.

