

Sales - House - Benahavís

5.284.420€

Benahavís

House

Community: 5,400 EUR / year



4



7



680 m2



1005 m2

Every day is a summer day in the Esmeralda Villas, the 4-bedroom residences with glorious terraced gardens and exclusive pool areas. Here, everything was created to offer the most relaxing and unwinding experience, like the steam & sauna rooms and the home theatre in the basement floor. All villas come with concrete boundary walls, double glazed windows, cooling and heating system, levelled and graded outdoor spaces, precast concrete pavers on driveway and parking. Each villa features an exquisite pool and beautifully crafted hardscape. Located within the gated community of Los Jaralillos - Benahavís, prides itself on providing a private and secure environment for its residents with premium 24/7 security services. THE PROJECT OFFERS 53 VILLAS WITH 3 DIFFERENT STYLES OF 4, 5, AND 6 BEDROOMS, PRICES RANGING FROM 3.600.000 EU TO 8.400.000 EU.

Setting

- ✓ Close To Golf
- ✓ Close To Shops
- ✓ Close To Town
- ✓ Close To Schools

Climate Control

- ✓ Air Conditioning
- ✓ Fireplace
- ✓ U/F Heating

Kitchen

- ✓ Fully Fitted
- ✓ Partially Fitted

Category

- ✓ Luxury

Orientation

- ✓ South East

Views

- ✓ Sea
- ✓ Mountain
- ✓ Golf
- ✓ Country
- ✓ Panoramic
- ✓ Garden
- ✓ Pool

Garden

- ✓ Private

Condition

- ✓ Excellent
- ✓ New Construction

Features

- ✓ Covered Terrace
- ✓ Lift
- ✓ Fitted Wardrobes
- ✓ Near Transport
- ✓ Private Terrace
- ✓ Solarium
- ✓ Gym
- ✓ Sauna
- ✓ Games Room
- ✓ Guest Apartment
- ✓ Storage Room
- ✓ Utility Room
- ✓ Ensuite Bathroom
- ✓ Marble Flooring
- ✓ Jacuzzi
- ✓ Barbeque
- ✓ Double Glazing
- ✓ Domotics

Security

- ✓ Electric Blinds
- ✓ Entry Phone
- ✓ Alarm System
- ✓ 24 Hour Security

Pool

- ✓ Private
- ✓ Heated

Furniture

- ✓ Fully Furnished

Parking

- ✓ Covered









ESMERALDA VILLAS

4 - BED	SQM	680 - 822
	SQFT	7,320 - 8,848
PLOT SIZE		
SQM	1,005 - 1,669	
SQFT	10,818 - 17,965	

Including total indoor & outdoor built up area.



BASEMENT

Disclaimer: All pictures, plans, layouts, information, data and details included in this brochure are indicative only and may change at any time up to the final 'as built' status in accordance with final designs of the project, regulatory approvals and planning permissions. All accessories and interior finishes such as wallpaper, chandeliers, furniture, electronics, white goods, curtains, hard and soft landscaping, pavements, features, gym, and other elements displayed in the brochure, or between the plot boundary, are not part of the unit and are shown for illustrative purposes only.



ESMERALDA VILLAS

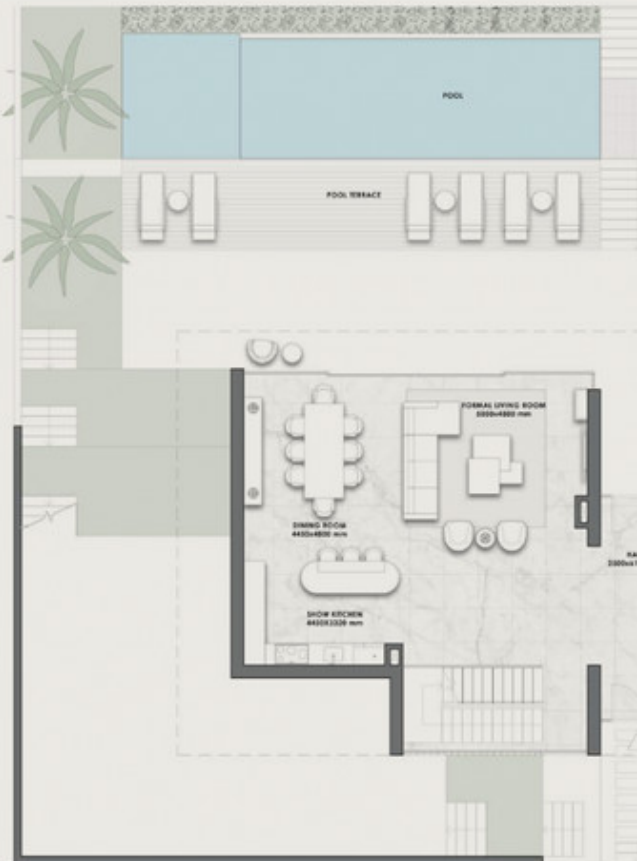
4 - BED	SQM	680 - 822
	SQFT	7,320 - 8,848
PLOT SIZE		
SQM	1,005 - 1,669	
SQFT	10,818 - 17,965	

Including total indoor & outdoor built up area.



GROUND FLOOR

Disclaimer: All pictures, plans, layouts, information, data and details included in this brochure are indicative only and may change at any time up to the final 'as built' status in accordance with final designs of the project, regulatory approvals and planning permissions. All accessories and interior finishes such as wallpaper, chandeliers, furniture, electronics, white goods, curtains, hard and soft landscaping, pavements, features, gym, and other elements displayed in the brochure, or between the plot boundary, are not part of the unit and are shown for illustrative purposes only.



ESMERALDA VILLAS

4 - BED	SQM 680 - 822
	SQFT 7,320 - 8,848
PLOT SIZE	
SQM	1,005 - 1,669
SQFT	10,818 - 17,965

Including total indoor & outdoor built up area.



FIRST FLOOR



Disclaimer: All pictures, plans, layouts, information, data and details included in this brochure are indicative only and may change at any time up to the final 'as built' status in accordance with final designs of the project, regulatory approvals and planning permissions. All accessories and interior finishes such as wallpaper, chandeliers, furniture, electronics, white goods, curtains, hard and soft landscaping, pavements, features, gym, and other elements displayed in the brochure, or between the plot boundary, are not part of the unit and are shown for illustrative purposes only.

ESMERALDA VILLAS

4 - BED	SQM 680 - 822
	SQFT 7,320 - 8,848
PLOT SIZE	
SQM	1,005 - 1,669
SQFT	10,818 - 17,965

Including total indoor & outdoor built up area.



ROOFTOP TERRACE



Disclaimer: All pictures, plans, layouts, information, data and details included in this brochure are indicative only and may change at any time up to the final 'as built' status in accordance with final designs of the project, regulatory approvals and planning permissions. All accessories and interior finishes such as wallpaper, chandeliers, furniture, electronics, white goods, curtains, hard and soft landscaping, pavements, features, gym, and other elements displayed in the brochure, or between the plot boundary, are not part of the unit and are shown for illustrative purposes only.