

## Sales - House - Benalmadena

# 1.495.000€

**Benalmadena**

**House**



3



3



243 m2



602 m2

Well-Located and Stylish Villa with Sea View in Benalmadena This exclusive villa is located in Benalmadena, a coastal town in the southern region of Andalusia, Costa del Sol. The villa is situated on a picturesque hilltop part of Benalmadena, offering breathtaking views of the Mediterranean Sea. It is considered among the best places to buy villa in Benalmadena. It is a cosmopolitan town that is known for its stunning beaches and numerous tourist attractions. The villa has an excellent location close to all amenities. The villa is 1,9 km from the beach, 5,9 km from Torrequebrada golf course, 21 km from Malaga International Airport, and 38 km from Marbella. To enjoy the outdoors, the villa has a private garden, that seamlessly blends with its surroundings and has a private pool. The idyllic location offers stunning sea views and tranquil living space close to all amenities. The villa has an open-plan kitchen with well-equipped modern appliances and high-quality fixtures, a stylish and functional open-planned living and dining area, and 3 spacious bedrooms with en-suite bathrooms and large windows to enjoy amazing sea views. The open floor plan and strategically positioned floor-to-ceiling windows allow natural light to flood the space and take full advantage of the scenic vistas of the Mediterranean Sea. Interior • Air Conditioning • Balcony • Blinds • En-Suite Bathroom • Laundry Room • Open-Plan Kitchen • Shower • Storage Room • Terrace • White Goods Exterior • Car Park • Private Garden • Private Pool Location • Airport (0-50 Km) • Beach (1-5 Km) • Sea (1-5 Km) • Sea View • Mountain View Heating • Air Conditioning

### Setting

- ✓ Close To Port
- ✓ Close To Shops
- ✓ Close To Sea
- ✓ Close To Schools
- ✓ Close To Marina
- ✓ Urbanisation

### Climate Control

- ✓ Air Conditioning

### Parking

- ✓ Covered
- ✓ More Than One
- ✓ Private

### Orientation

- ✓ South East
- ✓ South

### Views

- ✓ Sea
- ✓ Mountain
- ✓ Panoramic
- ✓ Garden
- ✓ Pool

### Utilities

- ✓ Electricity
- ✓ Drinkable Water

### Condition

- ✓ Excellent
- ✓ New Construction

### Features

- ✓ Fitted Wardrobes
- ✓ Private Terrace

### Category

- ✓ Holiday Homes
- ✓ Resale
- ✓ Contemporary

### Pool

- ✓ Private

### Kitchen

- ✓ Fully Fitted





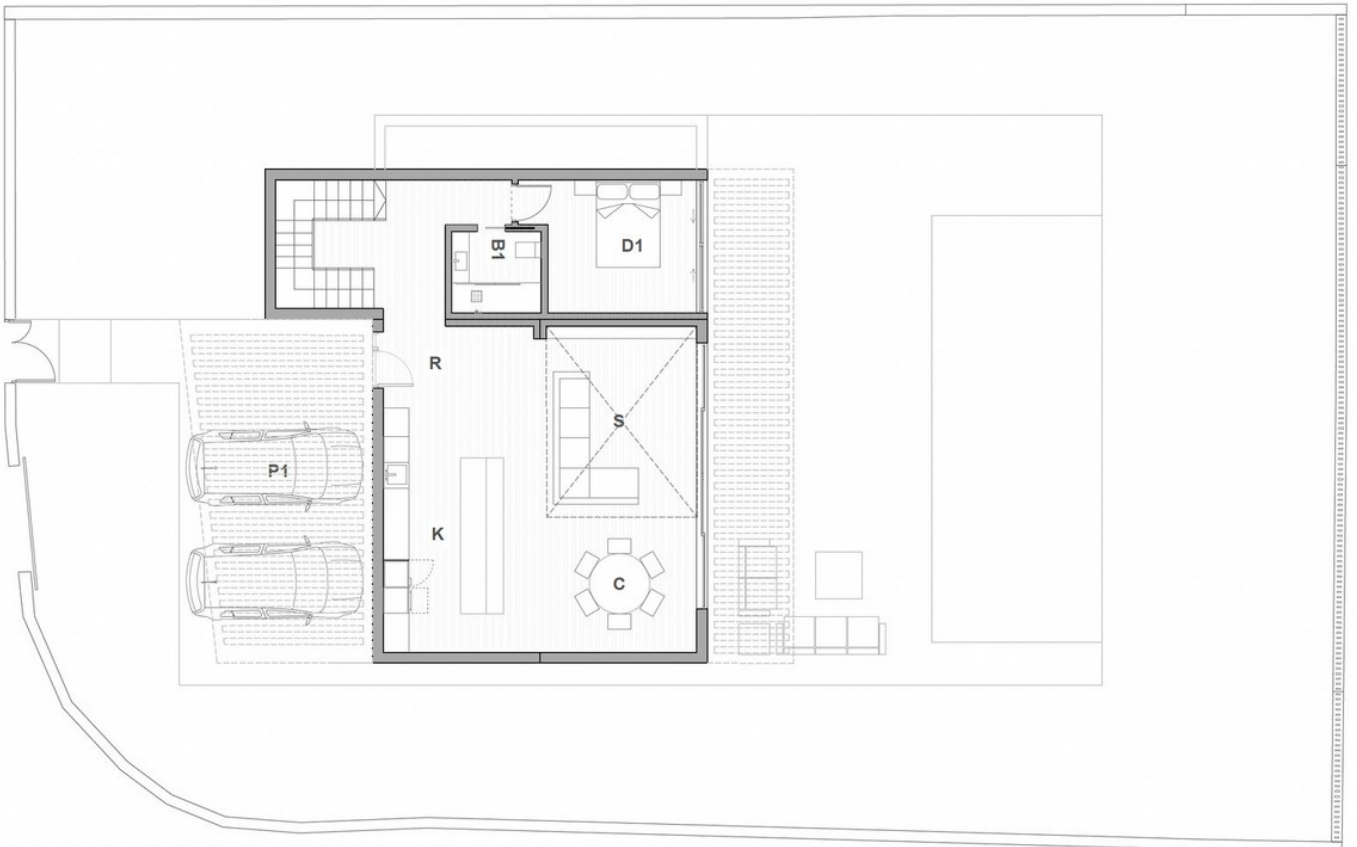














**TABLA DE SUPERFICIES ÚTILES**

**PLANTA PB**

Recibidor	5,57	m2
Cocina	22,48	m2
Comedor	11,5	m2
Salón	16,23	m2
Dormitorio 1	11,47	m2
Baño 1	3,96	m2

**VIVIENDA PB 71,21 m2**

PORCHE 1	32,44	m2
PORCHE 2	23	m2

**PORCHES 55,44 m2**

**TOTAL SUPERFICIE ÚTIL**

**TABLA DE SUPERFICIES ÚTILES**

**PLANTA P1**

Dormitorio 2	14,52	m2
Vestidor 1	4,87	m2
Baño 2	5,7	m2
Dormitorio 3	14,52	m2
Vestidor 2	4,88	m2
Baño 3	5,7	m2
Pasillo	8,87	m2

**VIVIENDA P1 59,06 m2**

**TABLA DE SUPERFICIES ÚTILES**

**SÓTANO**

Sala de ocio	54,75
Aseo	2,8

**SÓTANO 57,55**

**243,26**