

Sales - House - Marbesa

1.495.000€

Marbesa

House

Community: 516 EUR / year

IBI: 1,714 EUR / year



4



3



180 m2



815 m2

A unique modern bright villa, built all on 1 level, including a guest suite with independent access. Set beachside in the highly sought after area of Marbesa, East of Marbella town. The villa is very private and not overlooked, with spacious and bright rooms. 4 bedrooms and 3 bathrooms (2 en-suite). The property boasts a main house with 3 bedrooms and 1 bedroom suite with private access from the terrace. The main house comprises of a charming entrance leading into the main living area, all open plan for modern living. A sitting area, dining area and open plan American style kitchen, all with access onto the main terrace and swimming pool. The master bedroom with en-suite bathroom also overlooks this terrace. 2 guest bedrooms and 1 bathroom are to the other side of the entrance. Connected by a wide covered terrace is the 4th bedroom, with private access and en-suite bathroom. A huge low maintenance terraced area, ideal for entertaining with a large swimming pool in the center. To the right a covered area, perfect for outdoor dining and BBQs, adjacent to the villa a covered terrace and to left a south facing sunbathing and relaxation area overlooking the pool. The property also enjoys a very large roof top solarium with panoramic views. Parking for 4+ cars at the entrance of the property. This home boasts modern clean lines and finishes, with black and white stone, neutral ceramic flooring and A/C hot and cold throughout. Located within a few minutes' walk from the beach, this property is close to beach bars and Chiringuitos. Marbesa is a well-established residential area, East of Marbella town. Known for its low-rise properties, tranquil setting and abundance of natural greenery with many marine pine trees, creating a true beachside setting. This villa is an ideal family home and is also perfect as a rental investment.

Setting

- ✓ Beachside
- ✓ Close To Shops
- ✓ Close To Sea
- ✓ Close To Schools

Climate Control

- ✓ Air Conditioning
- ✓ Central Heating

Kitchen

- ✓ Fully Fitted
- ✓ Partially Fitted

Orientation

- ✓ South East

Views

- ✓ Garden
- ✓ Pool

Garden

- ✓ Private

Condition

- ✓ Good
- ✓ Recently Renovated
- ✓ Recently Refurbished

Features

- ✓ Covered Terrace
- ✓ Fitted Wardrobes
- ✓ Near Transport
- ✓ Private Terrace
- ✓ Guest Apartment
- ✓ Ensuite Bathroom
- ✓ Barbeque
- ✓ Double Glazing

Security

- ✓ Electric Blinds
- ✓ Alarm System

Pool

- ✓ Private

Furniture

- ✓ Fully Furnished

Parking

- ✓ Private























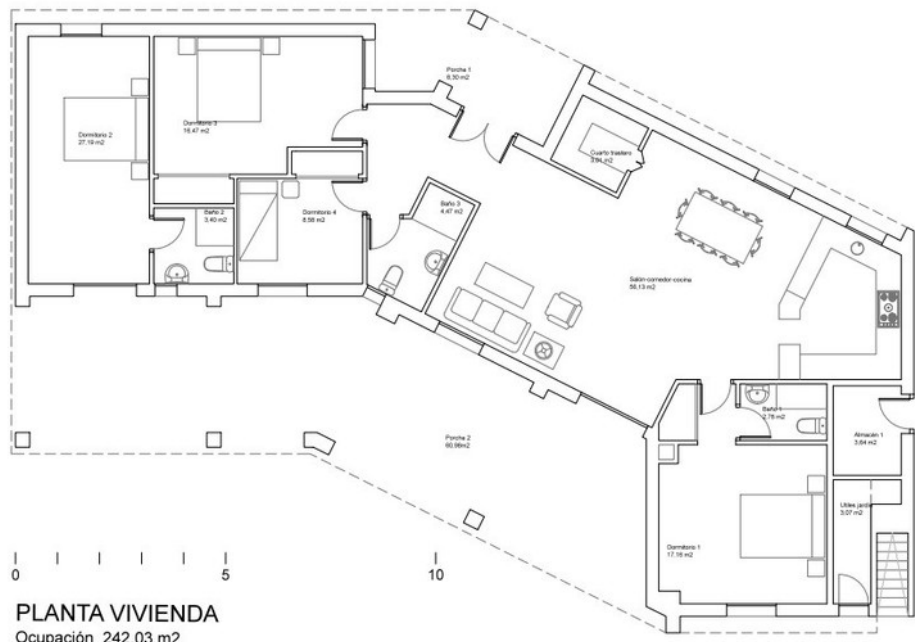












PLANTA VIVIENDA
 Ocupación 242,03 m²
 Superficie Construida 180,13 m²