

Sales - House - Fuengirola

684.000€

Fuengirola

House



4



2



267 m2



156 m2

This semi-detached house in Fuengirola is a charming three-level property that offers comfort and versatility for the whole family. On the ground floor, you are welcomed with a front patio that adds a touch of character and privacy to the home. Upon entering, a hallway leads you to a toilet, while the spacious living-dining room with a cozy fireplace becomes the heart of the home. From here, you can access a rear patio, ideal for relaxing or enjoying alfresco meals. The separate kitchen, with space for a dining area, also opens to the rear patio, making it perfect for those who enjoy cooking and entertaining. The backyard features a storage room for additional storage and a barbecue area, making it a versatile space for all your needs. Upstairs, you'll find four bedrooms that offer more than enough space for the entire family, along with a full bathroom. The basement, with its own full bathroom, provides additional space that could be used as a game room, work area, or even a guest space. This chalet also includes a private garage with enough space for one car, which is a luxury in such a central location. The property is ideally located, close to a wide variety of amenities, such as schools and shops, making everyday life easier. In short, this house is a unique opportunity to live with all the comforts a family could want, in a convenient and desired location in Fuengirola.

Setting

- ✓ Close To Shops
- ✓ Close To Schools

Features

- ✓ Private Terrace
- ✓ Storage Room
- ✓ Barbeque
- ✓ Basement

Condition

- ✓ Good

Kitchen

- ✓ Fully Fitted

Climate Control

- ✓ Air Conditioning
- ✓ Fireplace

Parking

- ✓ Garage
- ✓ Covered

Views

- ✓ Urban













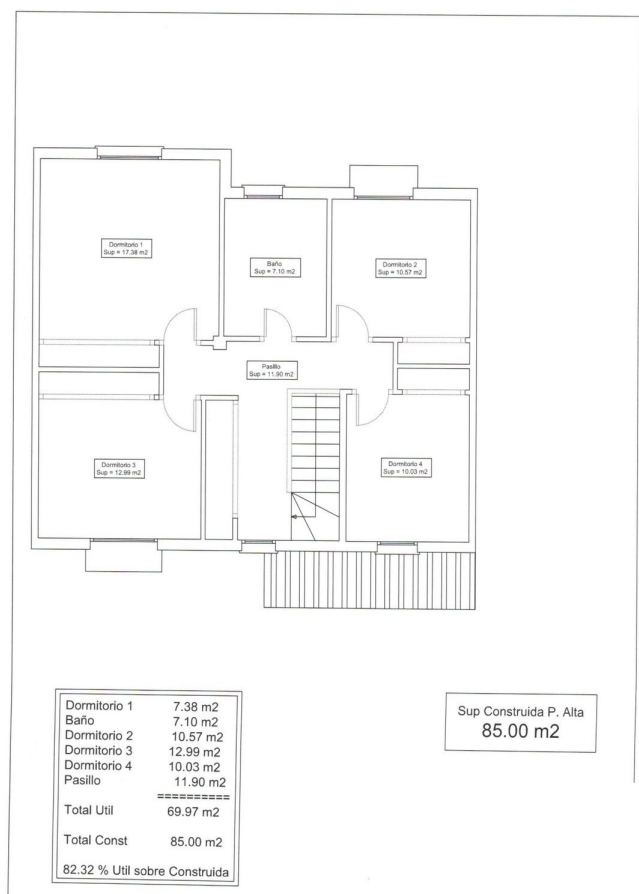
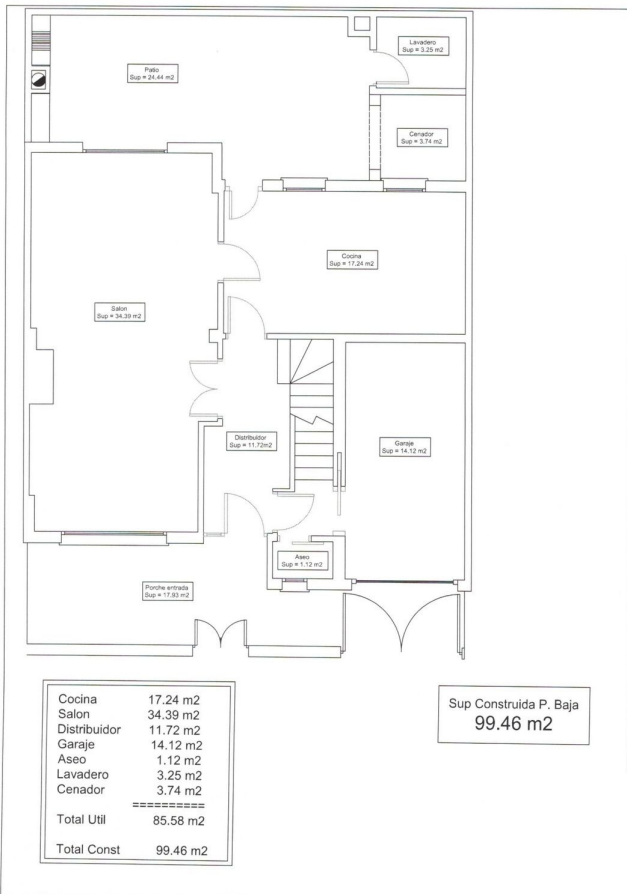


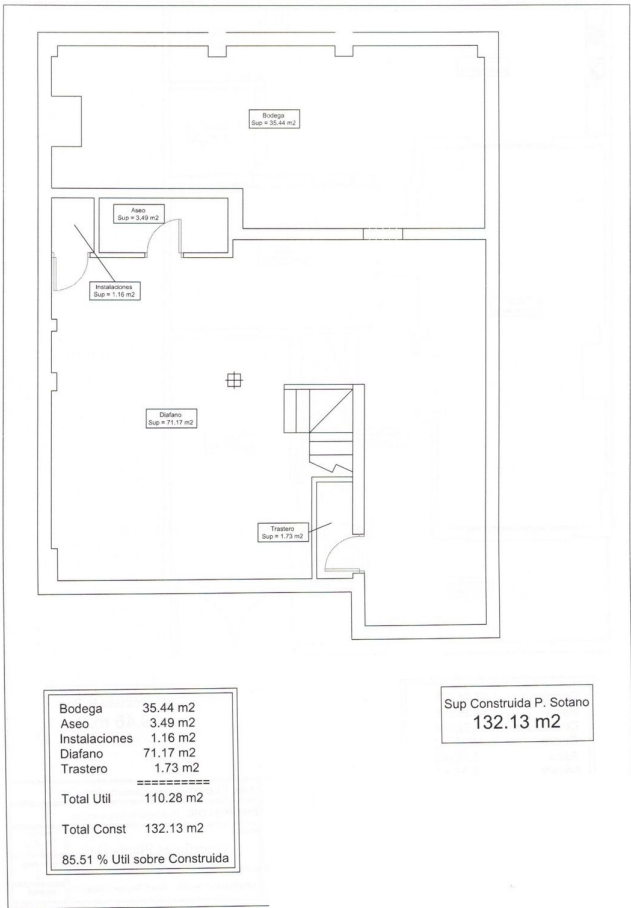












Bodega	35.44 m2
Aseo	3.49 m2
Instalaciones	1.16 m2
Diafano	71.17 m2
Trastero	1.73 m2
=====	
Total Util	110.28 m2
Total Const	132.13 m2
85.51 % Util sobre Construida	

Sup Construida P. Sotano
132.13 m2