

Sales - Apartment - Fuengirola

375.000€

Fuengirola

Apartment

Community: 2,616 EUR / year



2



1



67 m2

This modern apartment is located in a closed and secure community in Higueron West area. The apartment has two bedrooms and one bathroom. Open plan kitchen and living room lead to a good-sized covered terrace with great views both to the sea and the mountains. You can enjoy the sun until late in the evening. The apartment is highly equipped. Bathroom has a rain shower, marble tiles and underfloor heating. The price includes 2 parking spaces and a storage room. Communal areas have well maintained gardens and a swimming pool. There are pedestrian and bicycling routes near and even a park for the pets. All the services are nearby, also five-star hotel El Higueron with luxurious spa, gym, tennis and padel fields, restaurants, indoor and outdoor swimming pools and co-working area. Location and transportation connections are very good. It is 1,6 kilometres to the beach and 5 kilometres to the city of Fuengirola. The airport is 18,7 kilometres away. We are happy to give you more information about this beautiful apartment and lets' arrange a viewing!

Setting

- ✓ Close To Sea
- ✓ Close To Town
- ✓ Urbanisation

Climate Control

- ✓ Air Conditioning
- ✓ Central Heating
- ✓ U/F/H Bathrooms

Kitchen

- ✓ Fully Fitted

Category

- ✓ Holiday Homes
- ✓ Resale

Orientation

- ✓ South West
- ✓ West

Views

- ✓ Sea
- ✓ Mountain
- ✓ Country
- ✓ Garden

Garden

- ✓ Communal

Condition

- ✓ Excellent

Features

- ✓ Covered Terrace
- ✓ Lift
- ✓ Fitted Wardrobes
- ✓ Near Transport
- ✓ Private Terrace
- ✓ Access for people with reduced mobility
- ✓ Double Glazing

Security

- ✓ Gated Complex
- ✓ Entry Phone
- ✓ 24 Hour Security

Pool

- ✓ Communal

Furniture

- ✓ Not Furnished

Parking

- ✓ Underground
- ✓ Garage
- ✓ Covered
- ✓ Street
- ✓ More Than One
- ✓ Private















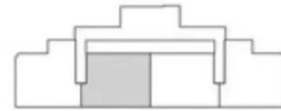
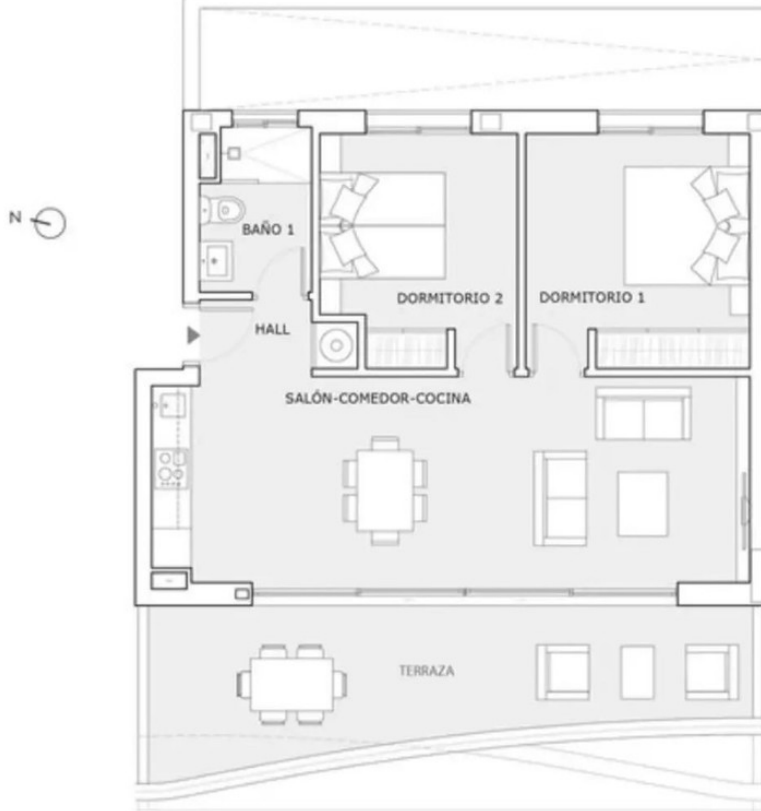












SUPERFICIES ÚTILES (m²)

Hall	2.46 m ²
Salón-Comedor-Cocina	28.69 m ²
Baño 1	3.98 m ²
Dormitorio 1	12.03 m ²
Dormitorio 2	10.03 m ²
Sup. Útil Total Interior	57.19 m²

Terraza Cubierta 17.42 m²

Terraza Descubierta 1.44 m²

Sup. Útil Total Exterior 18.86 m²

SUPERFICIES CONSTRUIDAS (m²)

Sup. Const. Total Int. 66.93 m²

Sup. Const. Total Ext. 21.53 m²



