

Sales - House - La Mairena

1.795.000€



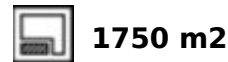
4



5



570 m2



1750 m2

OFF-PLAN ECOLOGICAL CONTEMPORARY VILLA - KEY-IN-HAND IN LA MAIRENA - OJEN Consisting out of; ground floor, entrance hall, guest toilet, open plan living/dining area with a fully fitted kitchen, master bedroom with ensuite bathroom and dressing, covered carport for 3 car, 2 further bedrooms each with their ensuite bathroom. basement with a bedroom with ensuite bathroom and full size sliding window, laundry room, storage room, games room and gymnasium- Pictures of the kitchens and bathrooms are just examples final choice will be that of the client within the offered possibilities! Example of some of the specifications, - Interior and exterior floor tiles from GRESPLANIA 600x600 - 800x800 - 1200x1200 (Color and size to choose) - Bathroom walls with COVERLAM plates (GRESPLANIA) 2700X1200 (Color to choose) - Bathrooms from ROCA - VILLEROY BOCH or similar - Aerothermia/airconditioning - Underfloor heating in the bathrooms - Ceiling high windows from REYNAERS with a sunken track, 5+5/chamber/6+6 or similar - Ceiling high and 1-meter-wide interior doors - Ceiling high pivot door and 1,50 wide - Fully fitted kitchen - Island with COVERLAM 3600X1600 no visible joints (Color to choose) - White goods from Bosch or AEG - Heated pool with automatic cover - 24 solar panels - 1 lithium batteries of 10kW - Car charger - Kitchen from COVERLAM with aluminum frame doors

Setting

- ✓ Mountain Pueblo
- ✓ Close To Golf
- ✓ Close To Shops
- ✓ Close To Town
- ✓ Close To Schools
- ✓ Urbanisation

Climate Control

- ✓ Air Conditioning
- ✓ Hot A/C
- ✓ Cold A/C
- ✓ Fireplace
- ✓ U/F Heating
- ✓ U/F/H Bathrooms

Kitchen

- ✓ Fully Fitted

Utilities

- ✓ Electricity
- ✓ Drinkable Water
- ✓ Telephone
- ✓ Photovoltaic solar panels
- ✓ Solar water heating

Orientation

- ✓ South East
- ✓ South

Views

- ✓ Sea
- ✓ Country
- ✓ Panoramic
- ✓ Garden
- ✓ Pool
- ✓ Urban
- ✓ Street

Garden

- ✓ Private
- ✓ Easy Maintenance

Category

- ✓ Golf
- ✓ Holiday Homes
- ✓ Investment
- ✓ Luxury
- ✓ Off Plan
- ✓ Contemporary

Condition

- ✓ New Construction

Features

- ✓ Covered Terrace
- ✓ Fitted Wardrobes
- ✓ Private Terrace
- ✓ Solarium
- ✓ WiFi
- ✓ Storage Room
- ✓ Utility Room
- ✓ Ensuite Bathroom
- ✓ Access for people with reduced mobility
- ✓ Barbeque
- ✓ Double Glazing
- ✓ Basement
- ✓ Fiber Optic

Security

- ✓ Entry Phone
- ✓ Alarm System
- ✓ Safe

Pool

- ✓ Private
- ✓ Heated

Furniture

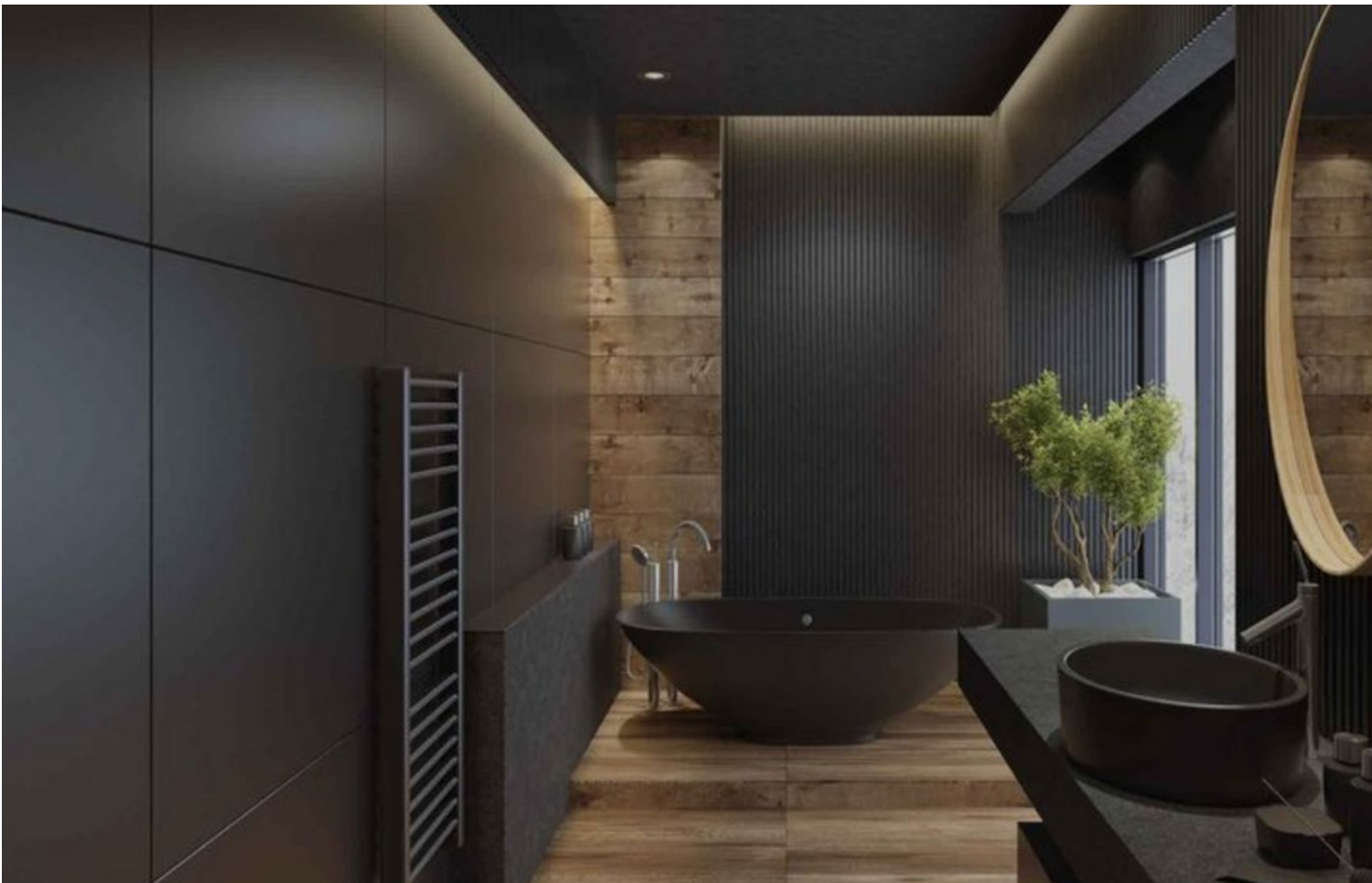
- ✓ Optional

Parking

- ✓ Garage
- ✓ Covered
- ✓ Open
- ✓ More Than One
- ✓ Private

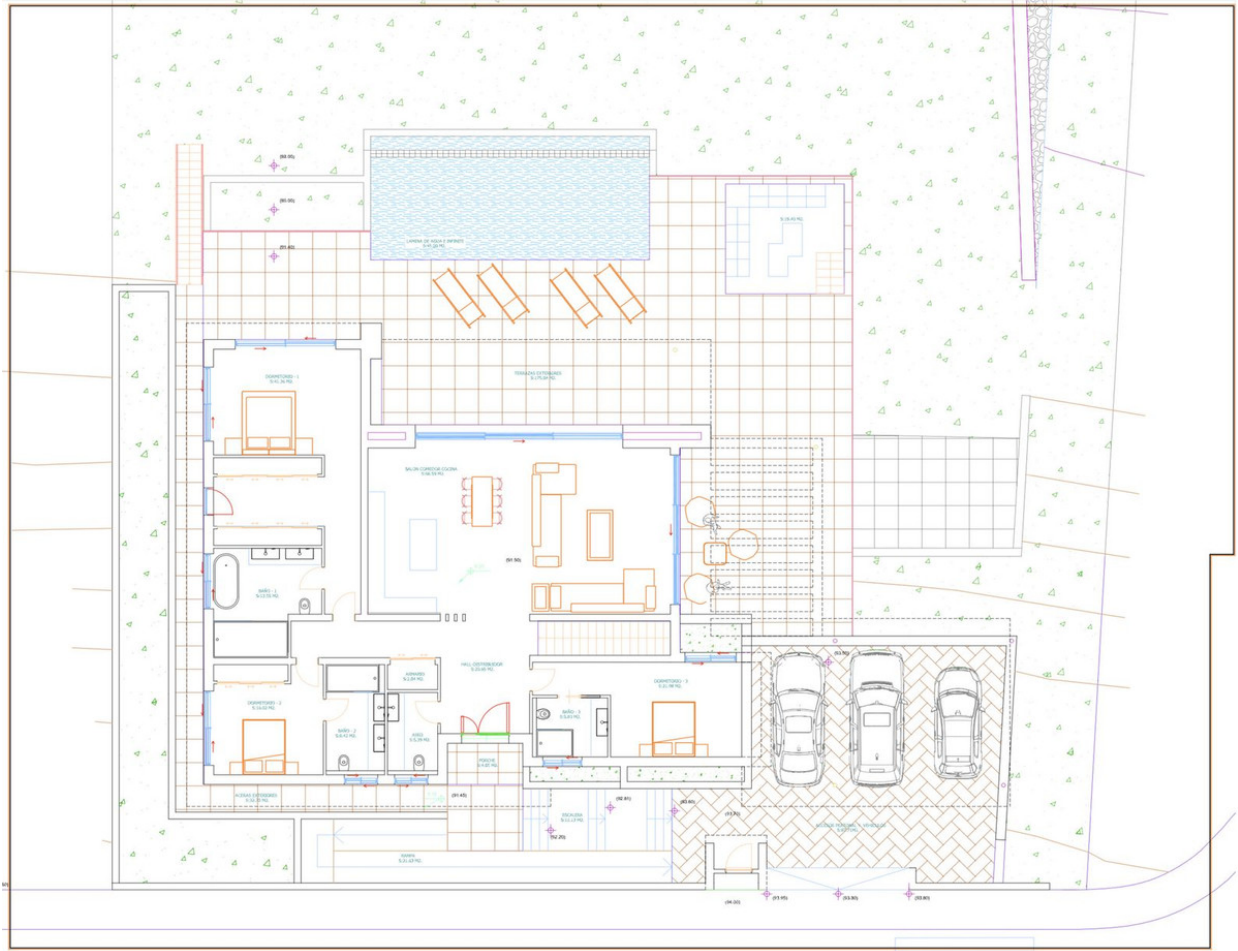


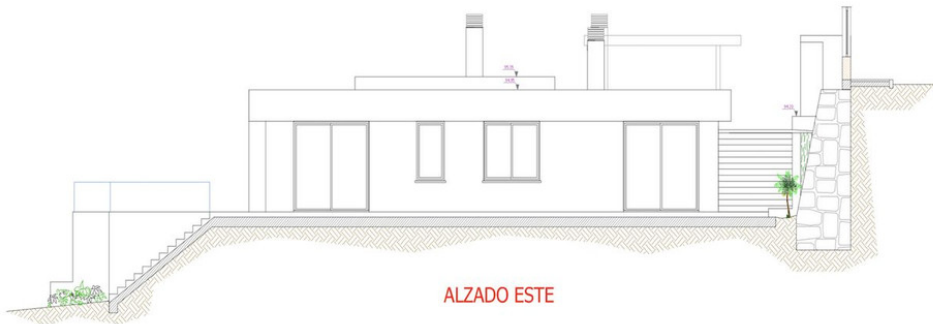
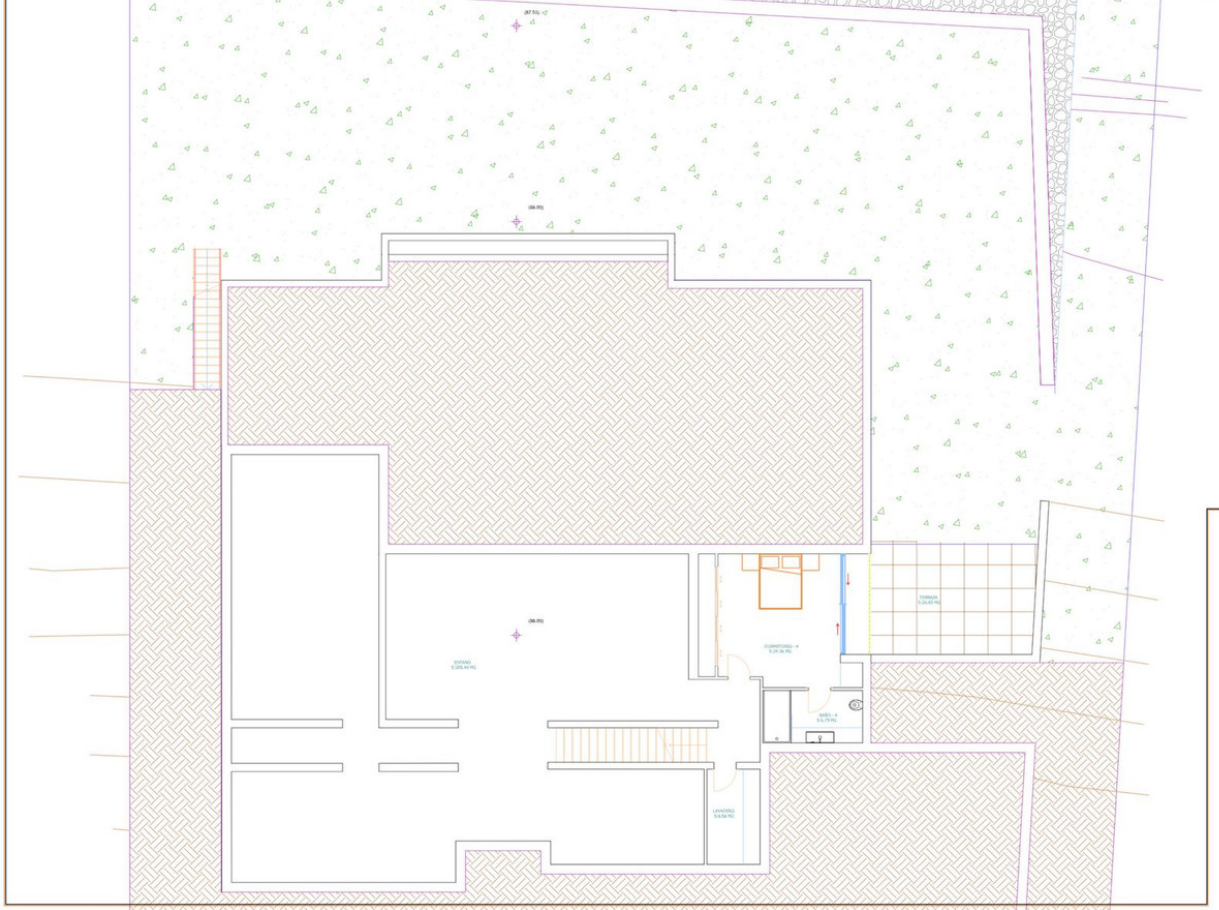




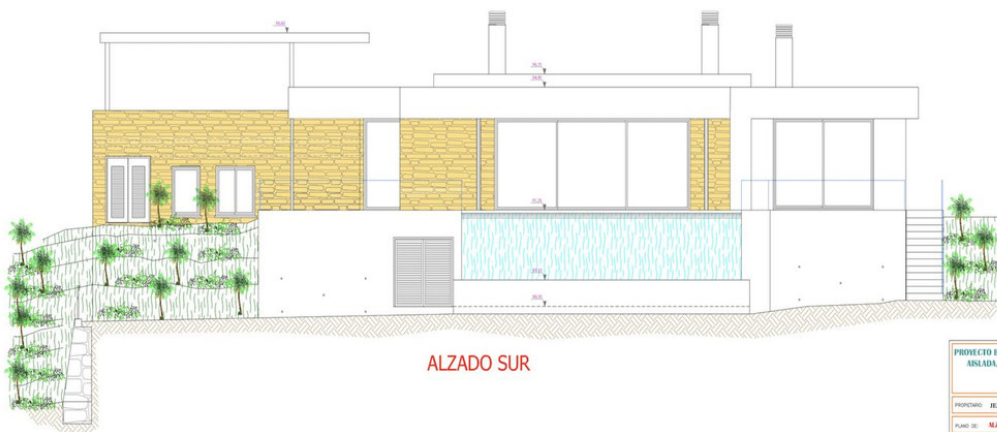








ALZADO ESTE



ALZADO SUR

PROYECTO BASICO Y DE EJECUCION DE VIVIENDA UNIFAMILIAR ANSADA, PISCINA Y OBRA EXTERIOR.	
PROYECTADO: JEAN PAUL BAERT	ARQUITECTO
PLANO DE: ALZADOS SUR Y ESTE	ESCALA: 1:50
	FOLIO
	PLANO Nº 15

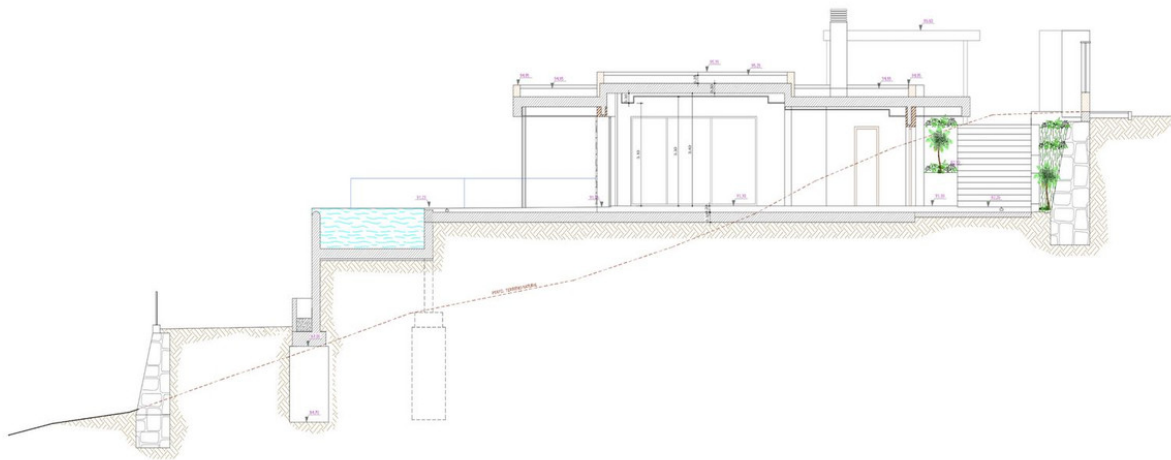


ALZADO NORTE



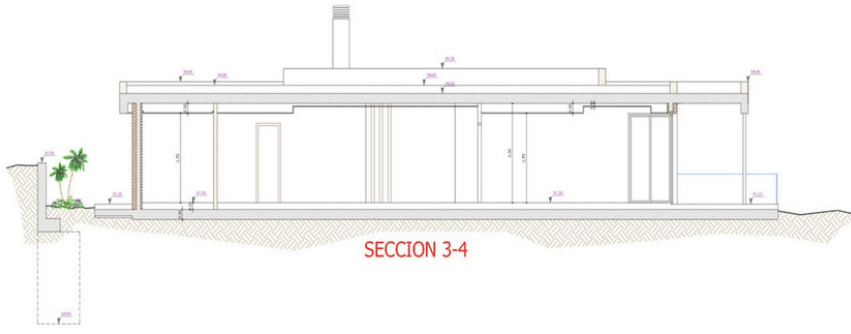
ALZADO OESTE

PROYECTO BÁSICO Y DE EJECUCIÓN DE VIVIENDA UNIFAMILIAR ANEXADA, PISCINA Y OBRA EXTERIOR.	
PROPIETARIO:	REFERENCIA:
PLANO DE: ALZADOS NORTE Y OESTE	ESCALA: 1:50
	FECHA:
	PLANO NÚM.
	14

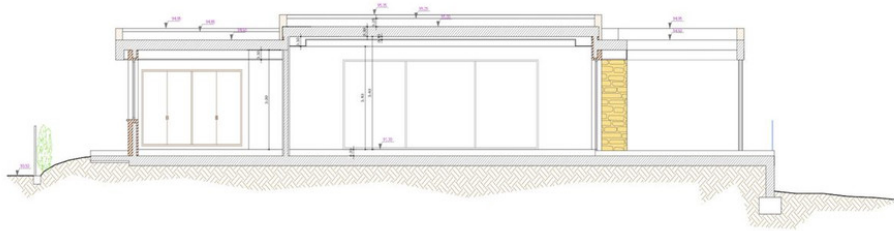


SECCION 1-2

PROYECTO BÁSICO Y DE EJECUCIÓN DE VIVIENDA UNIFAMILIAR ANEXADA, PISCINA Y OBRA EXTERIOR.	
PROPIETARIO: JUAN PAUL BAERT	REFERENCIA:
PLANO DE: SECCION 1-2	ESCALA: 1:50
	FECHA:
	PLANO NÚM.
	16



SECCION 3-4



SECCION 5-6

PROYECTO BASICO Y DE EJECUCION DE VIVIENDA UNIFAMILIAR ANSADA, PISCINA Y OBRA EXTERIOR.	
JEAN-PAUL BARRI	
PROYECTO:	REVISOR:
PLANO DE: SECCIONES 3-4 Y 5-6	ESCALA: 1:50
	FECHA:
	PLANO NÚM.
	17